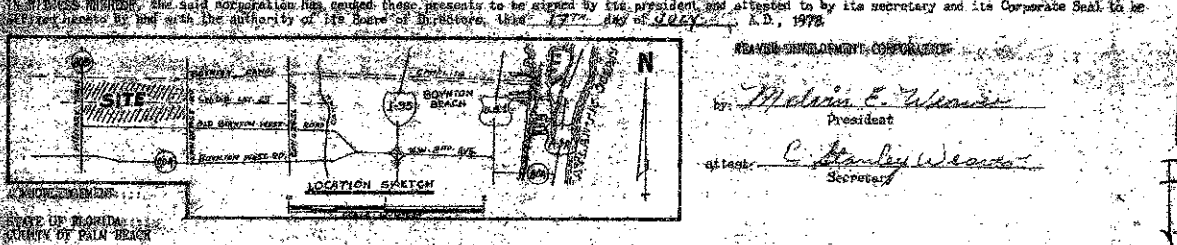


CYPRESS CREEK GOLF COURSE

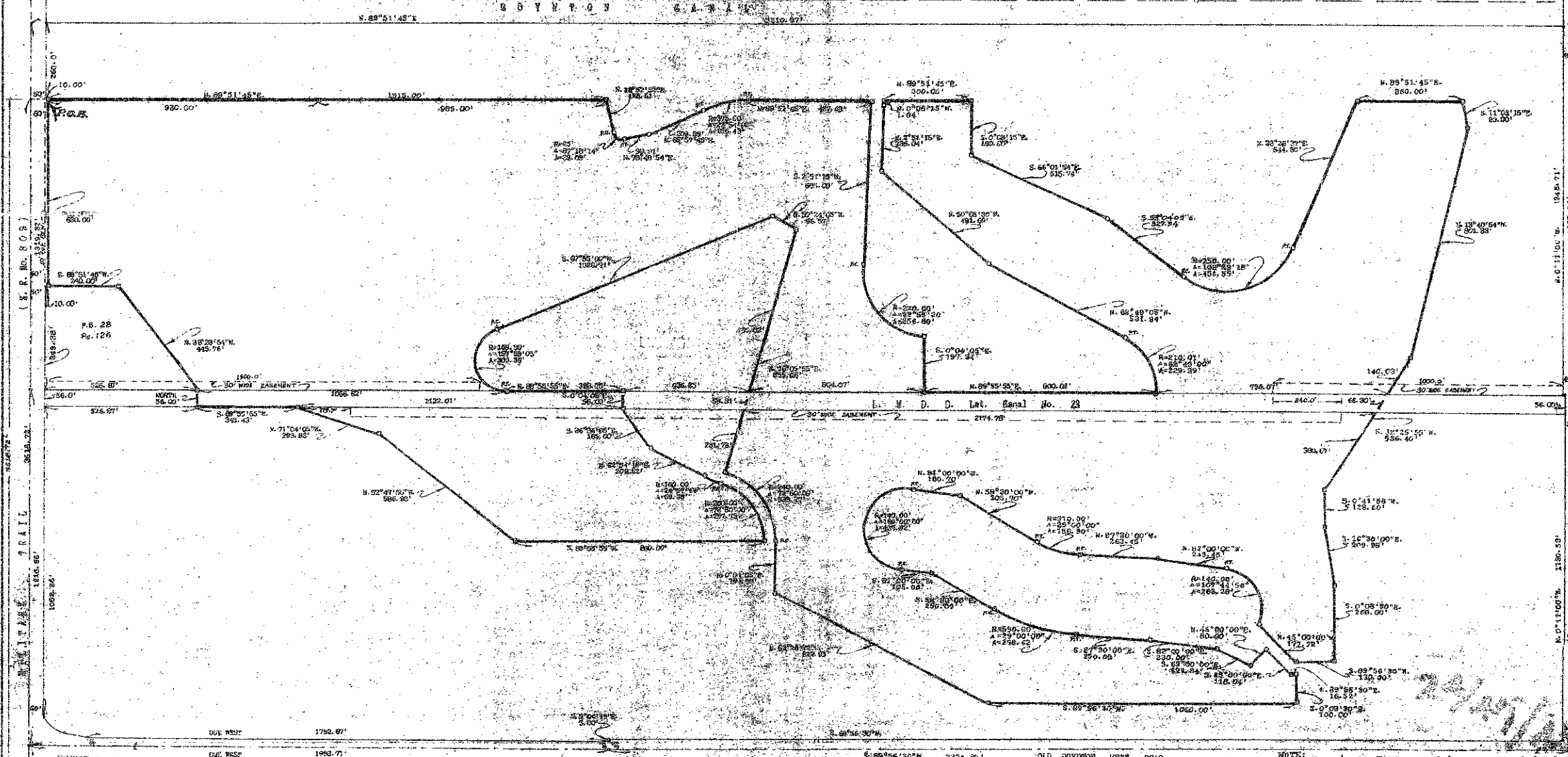
DEDICATION... KNOW ALL MEN BY THESE PRESENTS that REVER DEVELOPMENT CORPORATION, a Florida corporation, owned by and known as the owners of Township 45 South, Range 42 East, Palm Beach County, Florida, known as the Cypress Creek Golf Course, being more particularly described by reference to the plat of said course...

...bearing a radius of 100.00 ft.; the central point of said curve bearing N. 89° 51' 45" E., 200.00 ft. from said intersection point, thence along the line of said curve for an arc length of 40.00 ft. and/or a central angle of 24° 57' 50" to a point of Reverse Curve, thence along the line of a curve to the right having a radius of 200.00 ft. for an arc length of 297.79 ft. and/or a central angle of 72° 50' 00"...



MEMBER DEVELOPMENT CORPORATION
Melvin E. Weaver
 President
C. Stanley Weaver
 Secretary

106



TITLE CERTIFICATION...
 I, *Melvin E. Weaver*, do hereby certify that...
 Notary Public

SURVEYOR'S CERTIFICATE...
 This is to certify that the plat shown herein is a true and correct representation of a survey made under my responsible direction and supervision and that said survey is accurate to the best of my knowledge and belief...
Paul R. Smith
 State of Florida

APPROVALS...
 Board of County Commissioners of Palm Beach County, Florida...
 J. R. Baker, Clerk

COUNTY ENGINEER...
 This plat is hereby approved...
Charles G. ...
 County Engineer

MORTGAGEE'S ASSIGNMENT...
 Before me personally appeared *Melvin E. Weaver* and *C. Stanley Weaver*, known to me to be the individuals described in and who executed the foregoing instrument as President and Secretary of said corporation...
 A. D. 1978

TRANSFER IN DEDICATION...
 I, the undersigned, *Melvin E. Weaver*, as Trustee for *Stanley Weaver, Melvin E. Weaver, Curtis A. Weaver, Melvin E. Weaver, and Section W, Clerk*, the former directors and Shareholders of "REVER DEVELOPMENT CORPORATION, INC.", a dissolved Florida corporation, per Trust Agreement executed February 21, 1978, do hereby irrevocably and with consent to the delivery of the lands in the dedication hereby by the owner thereof...

ENDORSEMENT...
 Before me personally appeared *Melvin E. Weaver* and *C. Stanley Weaver*, known to me to be the individuals described in and who executed the foregoing instrument as President and Secretary of said corporation...
 A. D. 1978

233-309