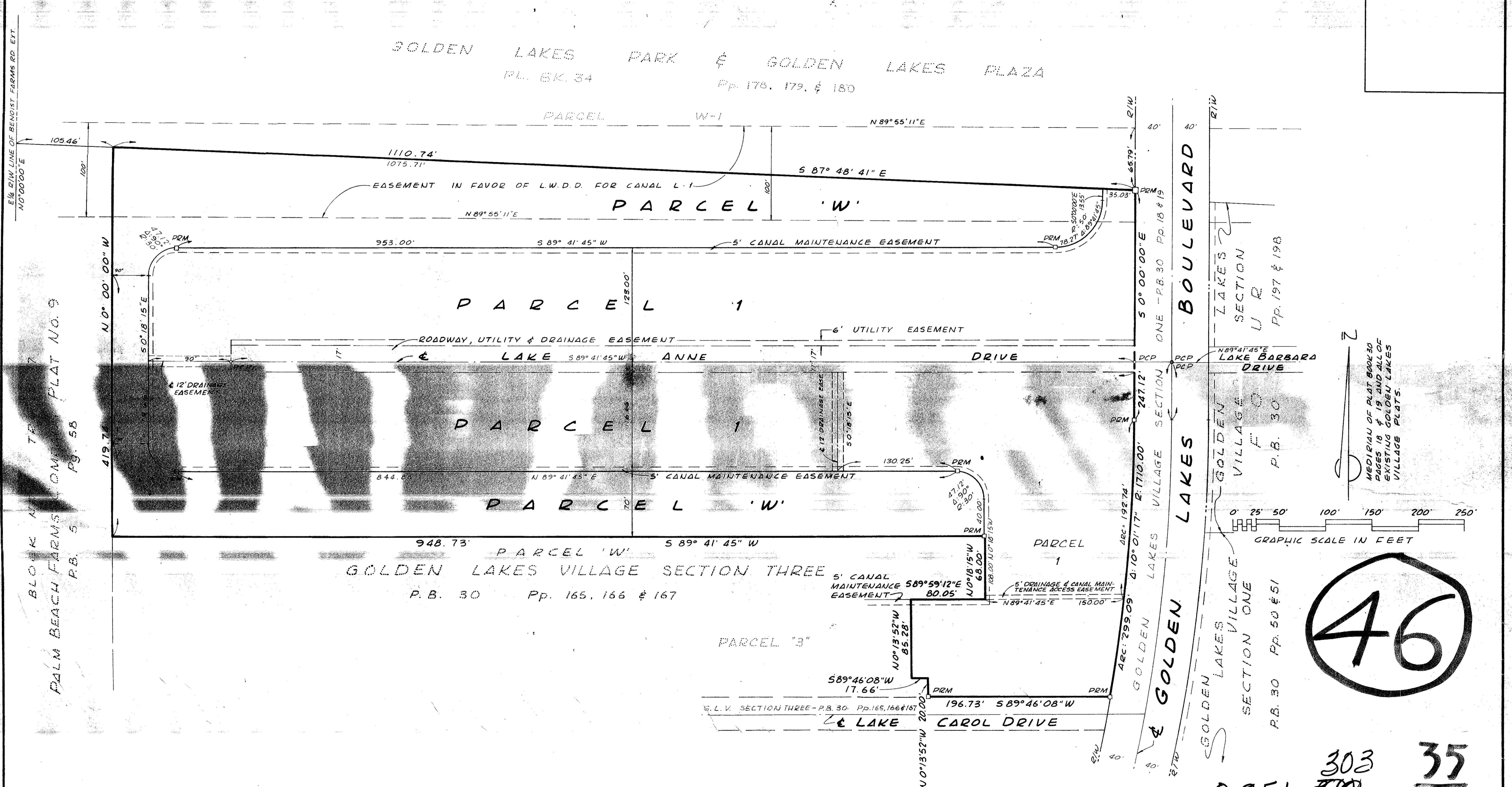


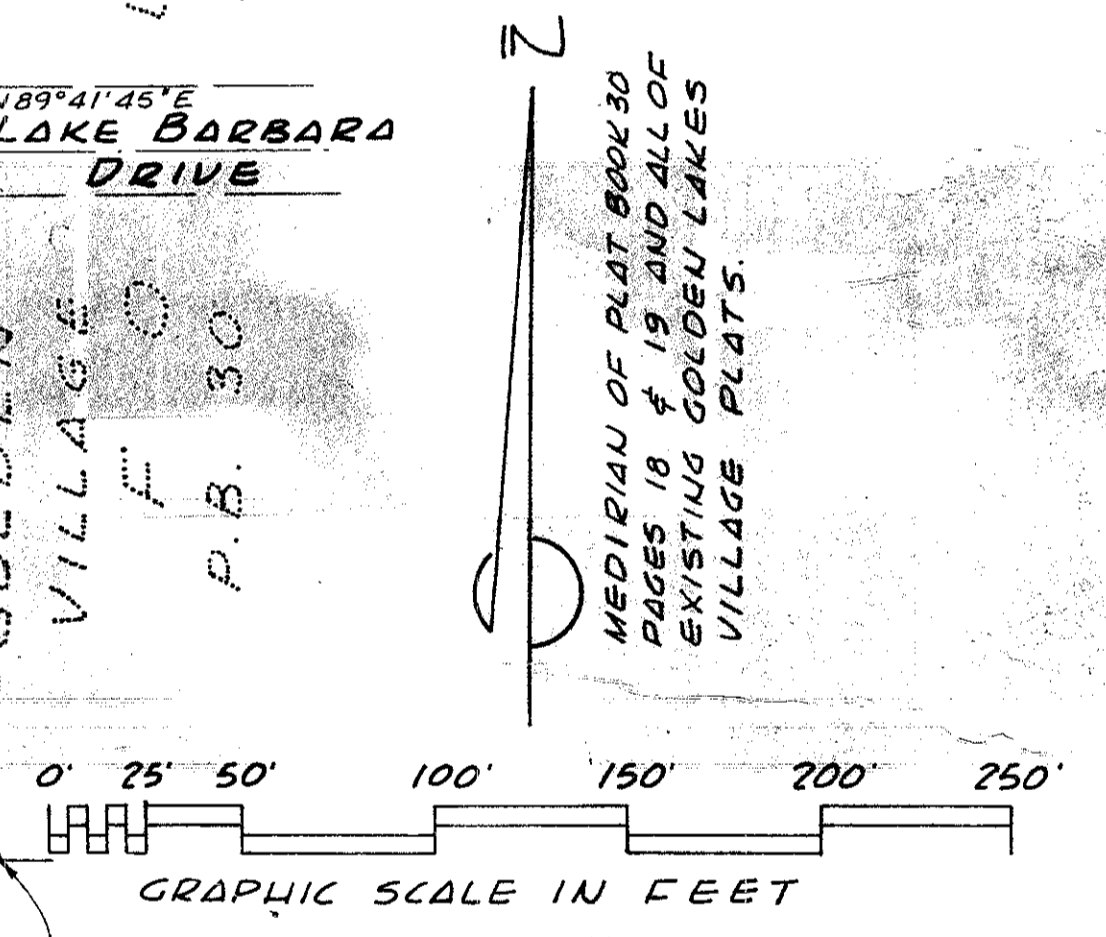
# A PLANNED UNIT DEVELOPMENT GOLDEN LAKES VILLAGE SECTION EIGHT

SHEET 2 OF 2 SHEETS

43



BLOCK N 70  
PALM BEACH FARMS COMMONS PLAT NO. 9  
P.B. 5 Pp. 58



MEDIAN OF PLAT BOOK 30  
PAGES 18 & 19 AND ALL OF  
EXISTING GOLDEN LAKES  
VILLAGE PLATS.

46

# GOLDEN LAKES VILLAGE - SECTION 8

Field Book  
No. G 75 Pg. 25  
Design  
D. M. WHITE  
Drawn  
M. C. HEWN  
Checked  
M. WHITE

ROBERT L. OWEN & ASSOCIATES, INC.  
ENGINEERS PLANNERS SURVEYORS  
WEST PALM BEACH  
FLORIDA

**GOLDEN LAKES VILLAGE**  
**SECTION EIGHT**  
SHEET 2 OF 2 SHEETS

Job No. 77-314  
Scale 1" = 50'  
Date APRIL 13, 1978  
Sheet 2 of 2  
File No. BF-2208

28+29  
0251-~~310~~ 303  
35  
43