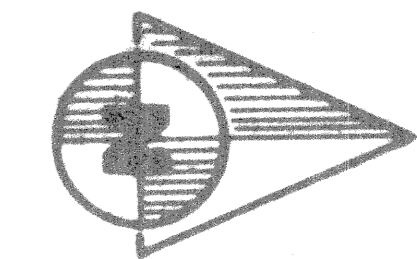


DEER RUN

Lying in Sections 21, 22, 23 & 26, Township 43 South, Range 40
East, Palm Beach County, Florida
September, 1977

SHEET 4 OF 6

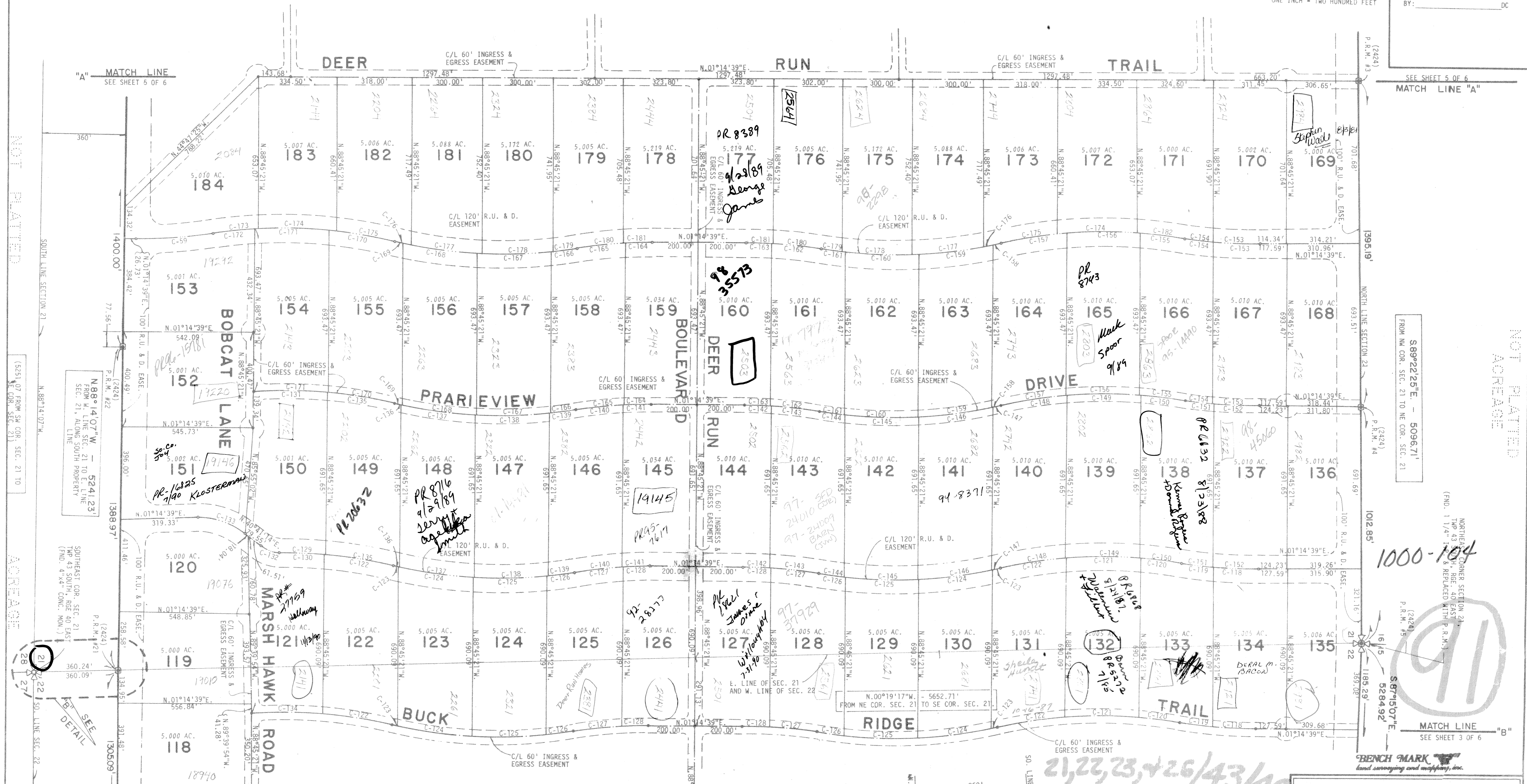
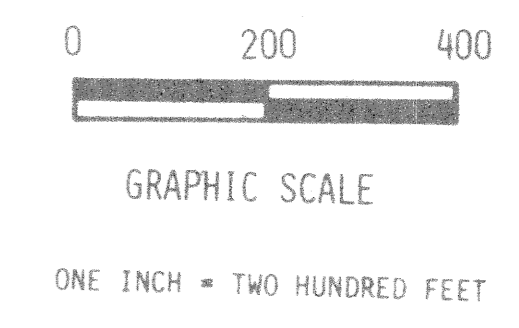


37

STATE OF FLORIDA
COUNTY OF PALM BEACH

THIS PLAT WAS FILED FOR
RECORD AT _____ M.
THIS _____ DAY OF _____
AD, 1977 AND DULY RE-
CORDED IN PLAT BOOK _____
ON PAGES _____ AND _____

JOHN B. DUNKLE, CLERK
CIRCUIT COURT
BY: _____ DC



NOT PLATTED

NOT PLATTED

(S25) 07 FROM SW COR. SEC. 21 TO NE COR. SEC. 21

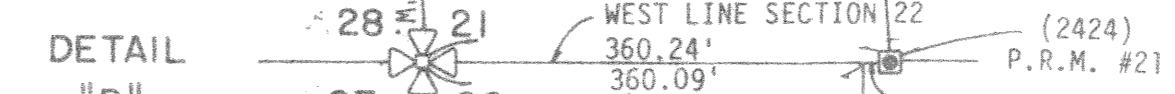
(S89) 22'56" E. - 5096.71'
FROM NW COR. SEC. 21 TO NE COR. SEC. 21

(FND. 1 1/4" = 1" REPLACED WITH P.R.M.)

1000-104

(2424) P.R.M. #5
S87°55'07" E.
5284.92'

- NOTES:
1. P.R.M.'s (FLA. CERTIFICATE NO. 2424) ARE DENOTED THUS:
 2. ALL CULDESAC EASEMENTS ARE A DIAMETER OF 100 FEET.
 3. ALL RETURN RADIUS ALONG EASEMENT LINES FOR INGRESS AND EGRESS EASEMENTS ARE 25 FEET UNLESS OTHERWISE INDICATED.
 4. ALL RETURN RADIUS WHEN INDICATED ALONG EASEMENT LINES FOR RECREATIONS, UTILITY AND DRAINAGE EASEMENTS, (R.U. & D. EASE.), ARE 50 FEET UNLESS OTHERWISE SHOWN.
 5. R.U. & D. EASE. DENOTES RECREATION, UTILITY AND DRAINAGE EASEMENT.
 6. C-50 INDICATES A CURVE NUMBER FOR DATA PERTAINING TO SAME, CONSULT CURVE DATA TABLE ON SHEET 6 OF 6.
 7. CENTERED ALONG ALL LOT LINES, OR PORTIONS THEREOF, WHERE NO EASEMENT IS GRAPHICALLY SHOWN IS A 40 FOOT RECREATION, UTILITY AND DRAINAGE EASEMENT, (R.U. & D. EASE.). ----- SEE DESIGNATION ON SHEET 1 OF 6.



DEER RUN

35/37

CONRAD W. SCHAEFER CONSULTING ENGINEERS, INC.
PALM BEACH COUNTY, FLORIDA

DESIGNED	DRAWN	CHECKED	FILE NO.	DRAWING NO.
DATE	SCALE	APPROVED	FILE NO.	SHEET NO.
9/13/77	1" = 200'	CWS	77-111	4 6

THIS INSTRUMENT WAS PREPARED IN THE OFFICES OF BENCH MARK LAND SURVEYING AND MAPPING, INC., 2300 PALM BEACH LAKES BLVD., SUITE 109, WEST PALM BEACH, FL.