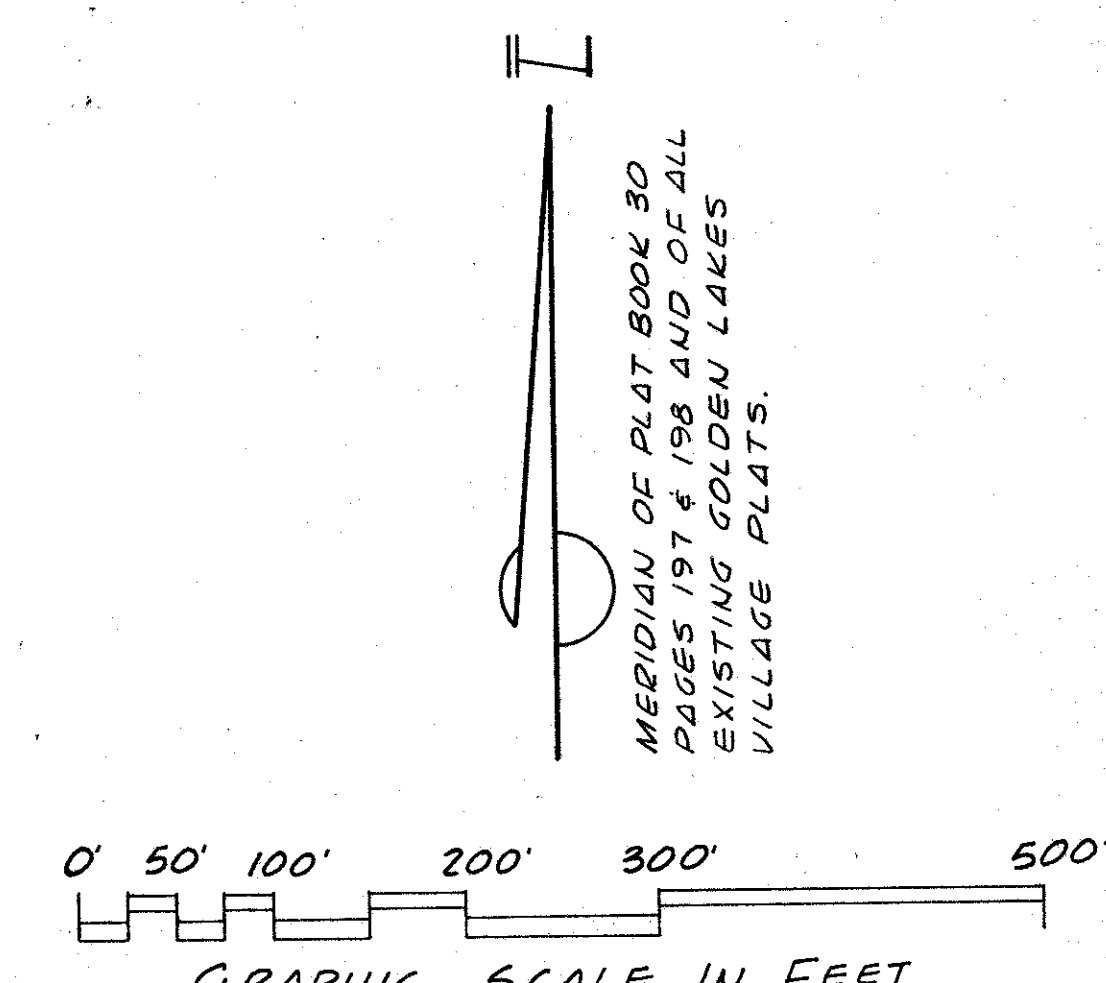
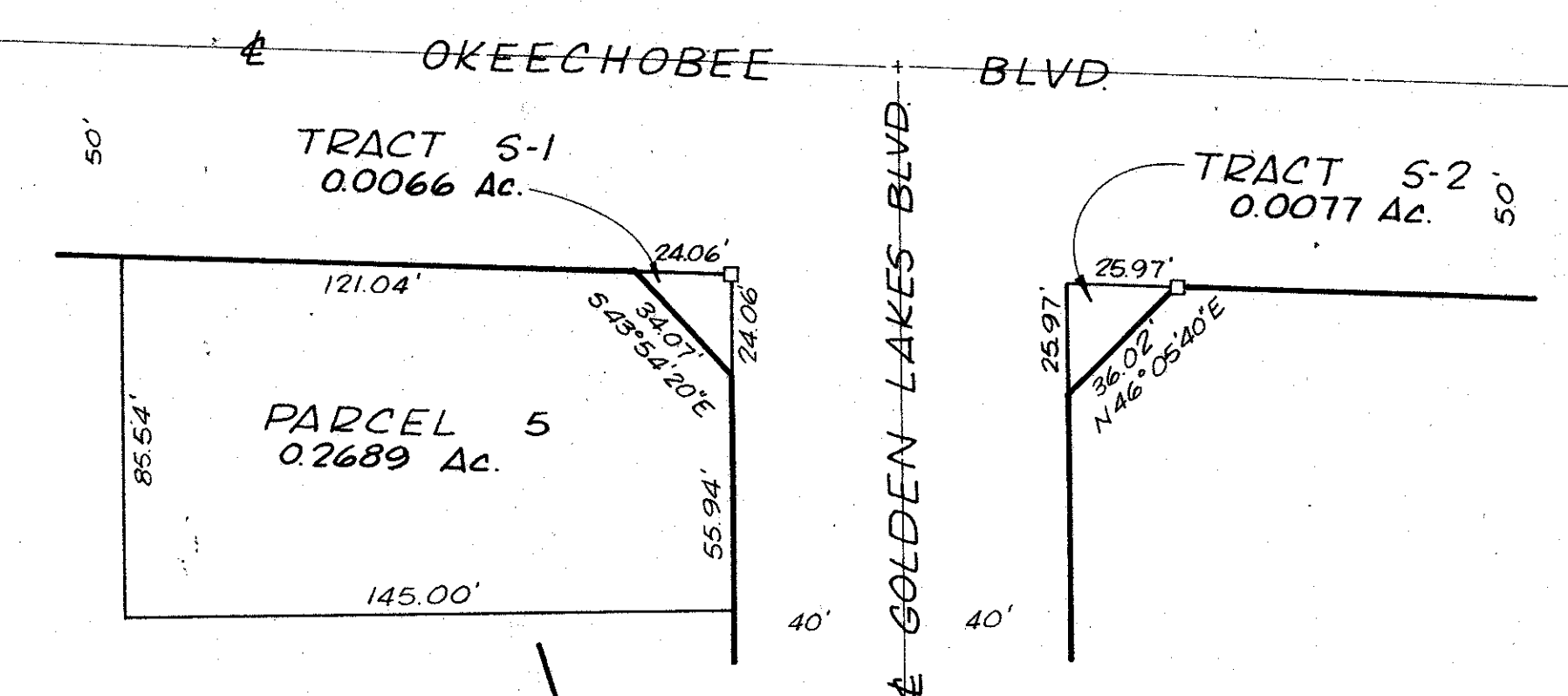
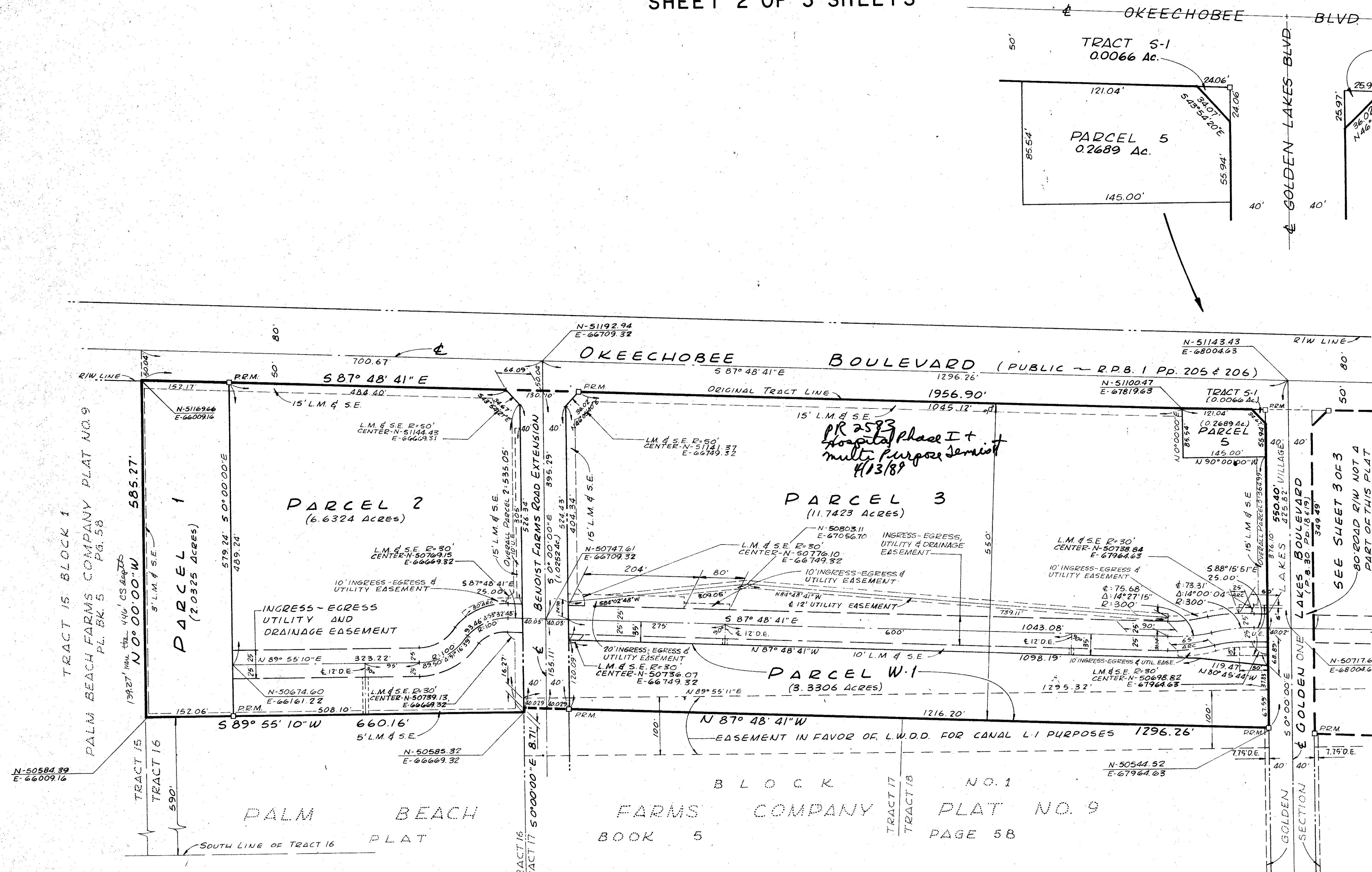


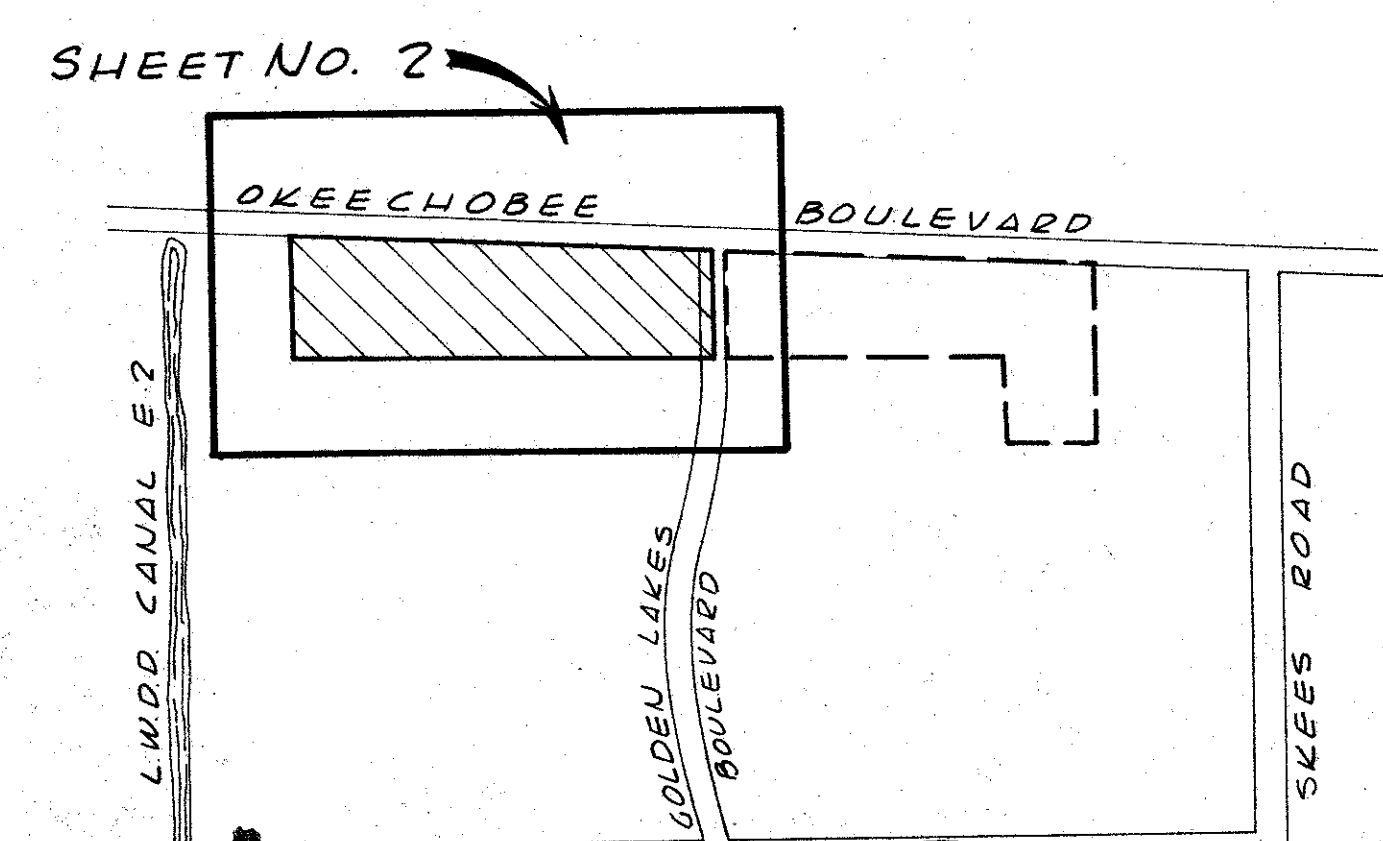
A PLANNED PROFESSIONAL OFFICE / BUSINESS PARK & A PLANNED COMMERCIAL DEVELOPMENT GOLDEN LAKES OFFICE PARK & GOLDEN LAKES PLAZA

179

SHEET 2 OF 3 SHEETS



- NOTES:**
- Building setback lines shall be as required by Palm Beach County Zoning Regulations.
 - Permanent Reference Monuments denoted thus: Permanent Control Points denoted thus:
 - Bearings cited herein are in the meridian of GOLDEN LAKES VILLAGE SECTION FOUR (P.B. 30 Pg. 197 & 198)
 - There shall be no buildings or other structures placed on utility easements or drainage easements. There shall be no trees or other shrubs placed in utility easements or drainage easements which will interfere with the construction maintenance or operation of drainage and utility facilities.
 - Section lines passing through the plat are, by survey, not readily determinable and are not shown. Ties to original tract lines of PALM BEACH FARMS COMPANY PLAT NO. 9 (Plat Book 5, Page 58) are shown in their stead.
 - Where utility and drainage easements intersect, the areas within the intersection are utility and drainage easements. Construction and maintenance of utilities shall not interfere with the drainage facilities or their operation within these areas of intersection.
 - D.E. denotes drainage easement. U.E. denotes utility easement.
 - L.M. & S.L. denotes Landscaping, Maintenance and Sign Easement.
 - Where utility and Landscaping, Maintenance and Sign Easements intersect, the areas within the intersection are utility and Landscaping, Maintenance and Sign Easements.
 - Co-ordinates shown hereon are in an assumed system.



GOLDEN LAKES OFFICE PARK + PLAZA

CS/SE
PET. 76-6
28/29/45/12
OFFICE PARK AREA
0251-31179

Field Book No. G-75 Pg. 36	ROBERT E. OWEN & ASSOCIATES ENGINEERS · PLANNERS · SURVEYORS WEST PALM BEACH FLORIDA	Job No. 76-1197 Scale 1" = 100' Date Sheet of 3 2 File No. BF-2208-G
Design D.M. WHITE Drawn M.C. LEWIS		GOLDEN LAKES OFFICE PARK & GOLDEN LAKES PLAZA SHEET TWO OF THREE SHEETS