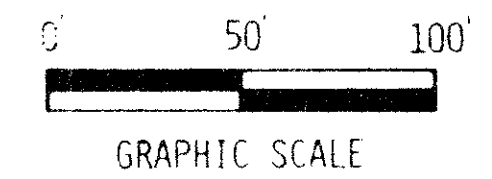
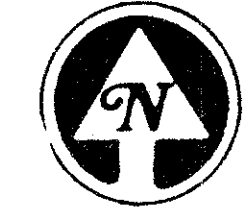


POD 8 AT BOCA LAGO

BEING A REPLAT OF A PART OF THE "REPLAT OF BOCA LAGO (P.U.D.)" AS RECORDED IN PLAT BOOK 31, PAGES 62-71 (INCLUSIVE), PUBLIC RECORDS, PALM BEACH COUNTY, FLORIDA, AND LYING IN SECTION 20, TWP. 47 SO., RGE 42 EAST. NOVEMBER, 1977

(SHEET 2 OF 2)



ONE INCH = FIFTY FEET

112

STATE OF FLORIDA
COUNTY OF PALM BEACH
THIS PLAT WAS FILED FOR RECORD AT
THIS 14TH DAY OF
AUGUST, 1977 AND DULY RECORDED IN PLAT BOOK
ON PAGES 112 AND 113
JOHN B. DUNKLE, CLERK
CIRCUIT COURT
BY: _____ DC

RECREATION TRACT "K"
GOLF COURSE

CURVE DATA TABLE

C. NO.	CENT. ANG.	RADIUS	ARC	CHORD	TANGENT
C-1	13°49'53"	322.77'	77.92'	132.29'	132.29'
C-2	15°15'37"	280.77'	74.78'	118.00'	118.00'
C-3	21°57'38"	492.00'	188.58'	338.96'	338.96'
C-4	57°18'49"	450.00'	450.14'	773.72'	773.72'
C-5	21°22'13"	492.00'	183.51'	338.96'	338.96'
C-6	21°22'13"	492.00'	183.51'	338.96'	338.96'
C-7	21°22'13"	492.00'	183.51'	338.96'	338.96'
C-8	21°22'13"	492.00'	183.51'	338.96'	338.96'
C-9	21°22'13"	492.00'	183.51'	338.96'	338.96'
C-10	21°22'13"	492.00'	183.51'	338.96'	338.96'
C-11	21°22'13"	492.00'	183.51'	338.96'	338.96'
C-12	21°22'13"	492.00'	183.51'	338.96'	338.96'
C-13	21°22'13"	492.00'	183.51'	338.96'	338.96'
C-14	21°22'13"	492.00'	183.51'	338.96'	338.96'
C-15	21°22'13"	492.00'	183.51'	338.96'	338.96'
C-16	21°22'13"	492.00'	183.51'	338.96'	338.96'
C-17	21°22'13"	492.00'	183.51'	338.96'	338.96'
C-18	21°22'13"	492.00'	183.51'	338.96'	338.96'
C-19	21°22'13"	492.00'	183.51'	338.96'	338.96'
C-20	21°22'13"	492.00'	183.51'	338.96'	338.96'
C-21	21°22'13"	492.00'	183.51'	338.96'	338.96'
C-22	21°22'13"	492.00'	183.51'	338.96'	338.96'
C-23	21°22'13"	492.00'	183.51'	338.96'	338.96'
C-24	21°22'13"	492.00'	183.51'	338.96'	338.96'
C-25	21°22'13"	492.00'	183.51'	338.96'	338.96'
C-26	21°22'13"	492.00'	183.51'	338.96'	338.96'
C-27	21°22'13"	492.00'	183.51'	338.96'	338.96'
C-28	21°22'13"	492.00'	183.51'	338.96'	338.96'
C-29	21°22'13"	492.00'	183.51'	338.96'	338.96'
C-30	21°22'13"	492.00'	183.51'	338.96'	338.96'
C-31	21°22'13"	492.00'	183.51'	338.96'	338.96'
C-32	21°22'13"	492.00'	183.51'	338.96'	338.96'
C-33	21°22'13"	492.00'	183.51'	338.96'	338.96'
C-34	21°22'13"	492.00'	183.51'	338.96'	338.96'
C-35	21°22'13"	492.00'	183.51'	338.96'	338.96'
C-36	21°22'13"	492.00'	183.51'	338.96'	338.96'
C-37	21°22'13"	492.00'	183.51'	338.96'	338.96'
C-38	21°22'13"	492.00'	183.51'	338.96'	338.96'
C-39	21°22'13"	492.00'	183.51'	338.96'	338.96'
C-40	21°22'13"	492.00'	183.51'	338.96'	338.96'
C-41	21°22'13"	492.00'	183.51'	338.96'	338.96'
C-42	21°22'13"	492.00'	183.51'	338.96'	338.96'
C-43	21°22'13"	492.00'	183.51'	338.96'	338.96'
C-44	21°22'13"	492.00'	183.51'	338.96'	338.96'
C-45	21°22'13"	492.00'	183.51'	338.96'	338.96'
C-46	21°22'13"	492.00'	183.51'	338.96'	338.96'
C-47	21°22'13"	492.00'	183.51'	338.96'	338.96'
C-48	21°22'13"	492.00'	183.51'	338.96'	338.96'
C-49	21°22'13"	492.00'	183.51'	338.96'	338.96'
C-50	21°22'13"	492.00'	183.51'	338.96'	338.96'

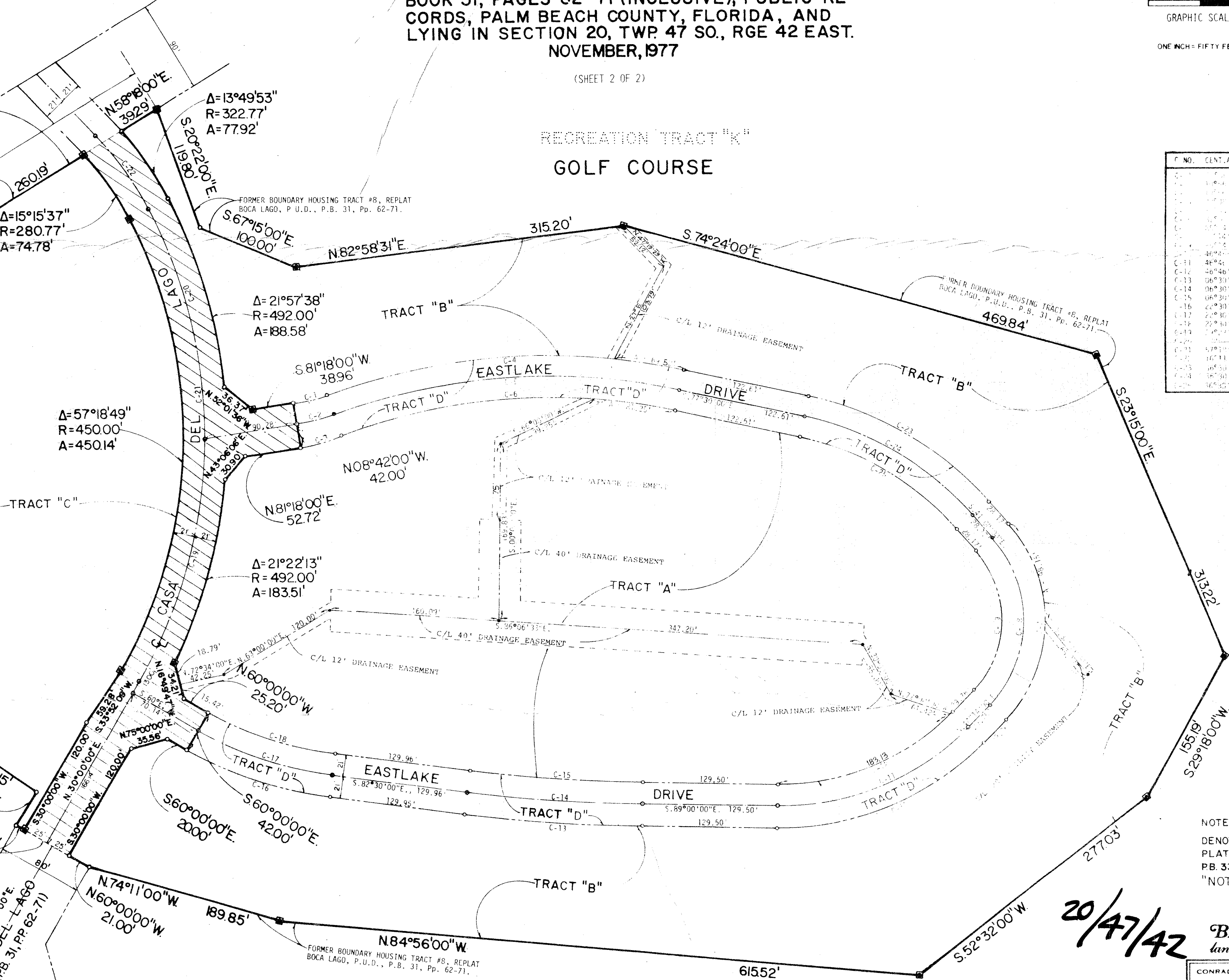
THE FAIRWAYS OF BOCA LAGO
(PB 33, PP. 36-39)
LAKE WORTH DRAINAGE DISTRICT
LATERAL CANAL L-47 R/W

GOLF COURSE

RECREATION TRACT "K"

FORMER BOUNDARY HOUSING TRACT #8, REPLAT BOCA LAGO, P.U.D., P.B. 31, PP. 62-71.

BOCA LAGO BOULEVARD



GOLF COURSE

RECREATION TRACT "K"

54

NOTE: 1000-111
DENOTES PORTION OF CASA DEL LAGO, PLAT OF FAIRWAYS OF BOCA LAGO, PB 33, PP. 36-39. SHADED AREA IS "NOT A PART OF THIS PLAT"

20/47/42

BENCH MARK land surveying and mapping, inc.

CONRAD W. SCHAEFER CONSULTING ENGINEERS
PALM BEACH COUNTY, FLORIDA

POD 8 AT BOCA LAGO

REV	WSK	REV	3600
11/74/77	1-50'	APPROVED	FILE

POD 8 AT BOCA LAGO