

# Caloosa 1st Addition

(a rural subdivision)

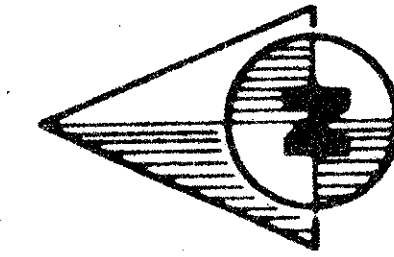
Lying in sections 20, 21,  
28, 29, Township 41 So.,  
Range 41 East, Palm  
Beach County, Florida.

60

STATE OF FLORIDA  
COUNTY OF PALM BEACH

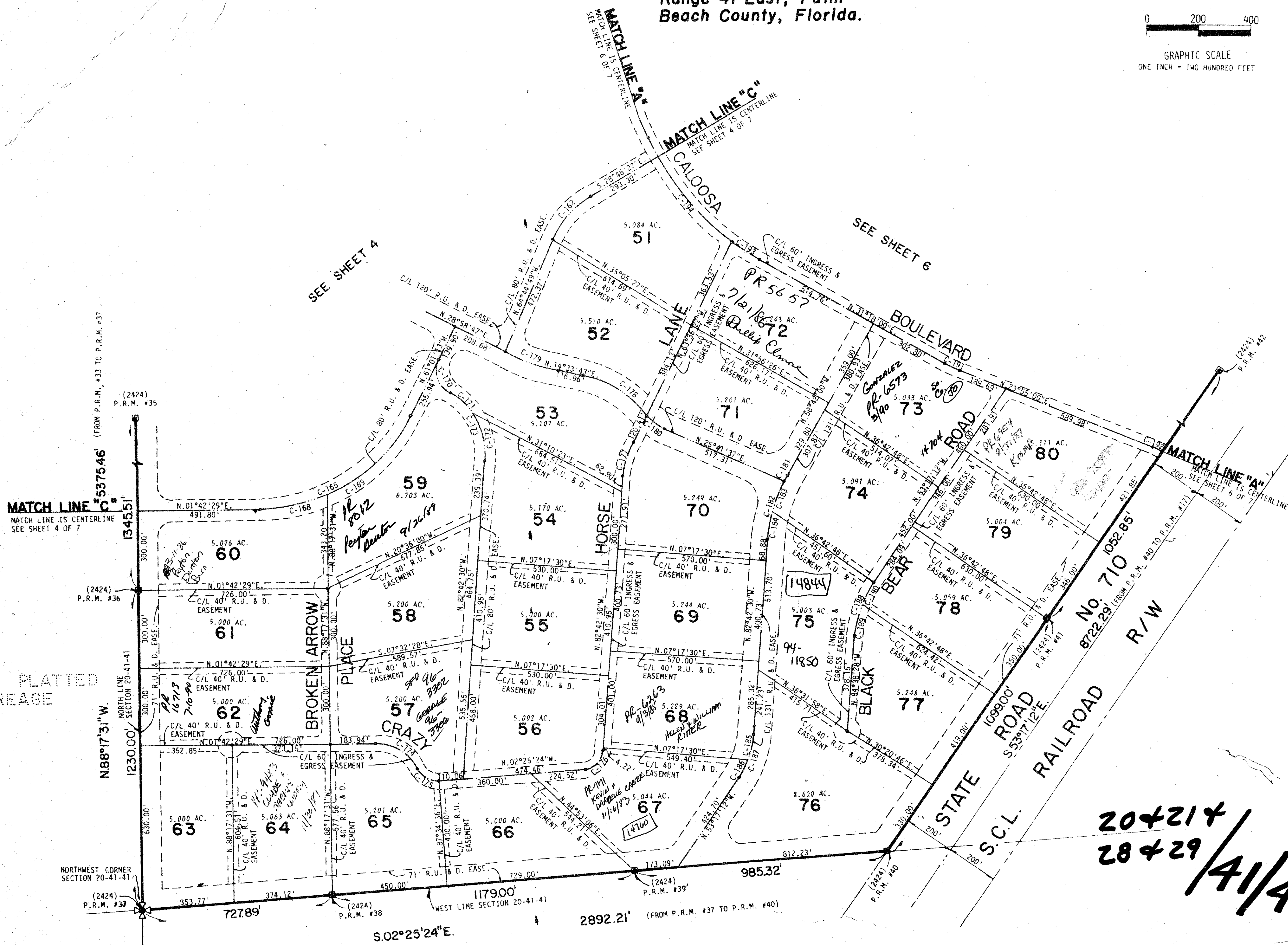
THIS PLAT WAS FILED FOR  
RECORD AT \_\_\_\_\_ M.  
THIS \_\_\_\_\_ TH DAY OF \_\_\_\_\_  
AD. 1978 AND DULY RE-  
CORDED IN PLAT BOOK  
ON PAGES \_\_\_\_\_ AND \_\_\_\_\_

JOHN B. DUNKLE, CLERK  
CIRCUIT COURT  
BY: \_\_\_\_\_ DC



0 200 400

GRAPHIC SCALE  
ONE INCH = TWO HUNDRED FEET



CURVE DATA					
C NO.	CENT. ANG.	RADIUS	ARC	CHORD	TANGENT
C-162	35°58'22"	350.00'	219.75'	216.15'	113.63'
C-165	62°43'42"	656.51'	718.76'	683.40'	400.17'
C-168	20°53'59"	556.51'	239.48'	238.15'	121.08'
C-169	41°49'43"	656.51'	479.29'	468.71'	250.89'
C-170	90°00'00"	90.10'	141.53'	127.42'	90.10'
C-171	18°27'43"	270.00'	87.00'	86.62'	43.88'
C-172	49°51'00"	270.00'	234.91'	227.57'	125.47'
C-173	68°18'43"	270.00'	321.91'	303.18'	183.19'
C-174	65°00'13"	166.46'	188.86'	178.89'	106.06'
C-175	69°08'06"	87.08'	105.07'	98.82'	60.00'
C-176	80°17'06"	75.00'	105.09'	96.70'	63.25'
C-177	19°06'09"	350.00'	116.69'	116.15'	58.89'
C-178	43°25'38"	365.18'	276.79'	270.21'	145.42'
C-179	14°25'04"	869.66'	218.84'	218.26'	110.00'
C-180	32°17'45"	143.60'	80.94'	79.88'	41.58'
C-181	01°00'19"	570.00'	10.00'	10.00'	5.00'
C-182	23°00'12"	570.00'	228.84'	227.31'	115.26'
C-183	15°03'00"	570.00'	149.72'	149.29'	75.30'
C-184	08°57'30"	570.00'	89.12'	89.03'	44.65'
C-185	20°12'00"	335.00'	118.11'	117.50'	59.67'
C-186	09°13'18"	335.00'	53.92'	53.86'	27.02'
C-187	29°25'18"	335.00'	172.03'	170.14'	87.95'
C-188	31°21'16"	391.94'	214.48'	211.82'	110.00'
C-189	21°40'26"	391.94'	148.26'	147.38'	75.03'
C-190	09°40'50"	391.94'	66.22'	66.14'	33.19'
C-191	07°23'00"	500.00'	64.43'	64.39'	32.26'
C-192	06°21'29"	500.00'	55.49'	55.46'	27.77'
C-193	08°11'24"	1000.00'	142.94'	142.82'	71.59'
C-194	24°03'51"	1000.00'	420.00'	416.92'	213.14'

NOT PLATTED  
ACREAGE

NOT PLATTED  
BORVAGE

# CALOOSA

20+21+  
28+29 / 41/41

0219-300

BENCH MARK  
land surveying and mapping, inc.

CONRAD W. SCHAEFER CONSULTING ENGINEERS INC  
PALM BEACH COUNTY FLORIDA

SECTION 4 OF CALOOSA

APPROVED	DRAWN	CHECKED	JOB NO.
CWS	WSK	RJW	77-042
DATE	SHEET	APPROVED	TOTAL
2/2/78	1 of 200	CWS	5 of 7

- NOTE: 1. ALL RETURN RADII, WHEN INDICATED, ALONG EASEMENT LINE INTERSECTIONS FOR RECREATION, UTILITY AND DRAINAGE EASEMENTS, (R.U. & D. EASE.), ARE 50 FEET UNLESS OTHERWISE NOTED.  
2. ALL RETURN RADII ALONG EASEMENT LINE INTERSECTIONS FOR INGRESS AND EGRESS EASEMENTS ARE 25 FEET, UNLESS OTHERWISE INDICATED.  
3. ALL CULDESACS AS SHOWN HEREON SHALL HAVE A 50 FOOT RADIUS.  
4. PERMANENT REFERENCE MONUMENTS DESIGNATED BY THIS PLAT: