

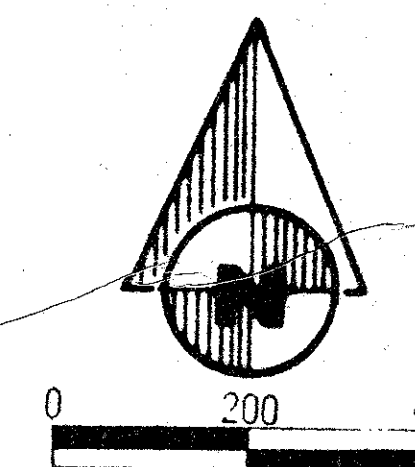
Caloosa 1st Addition

(a rural subdivision)

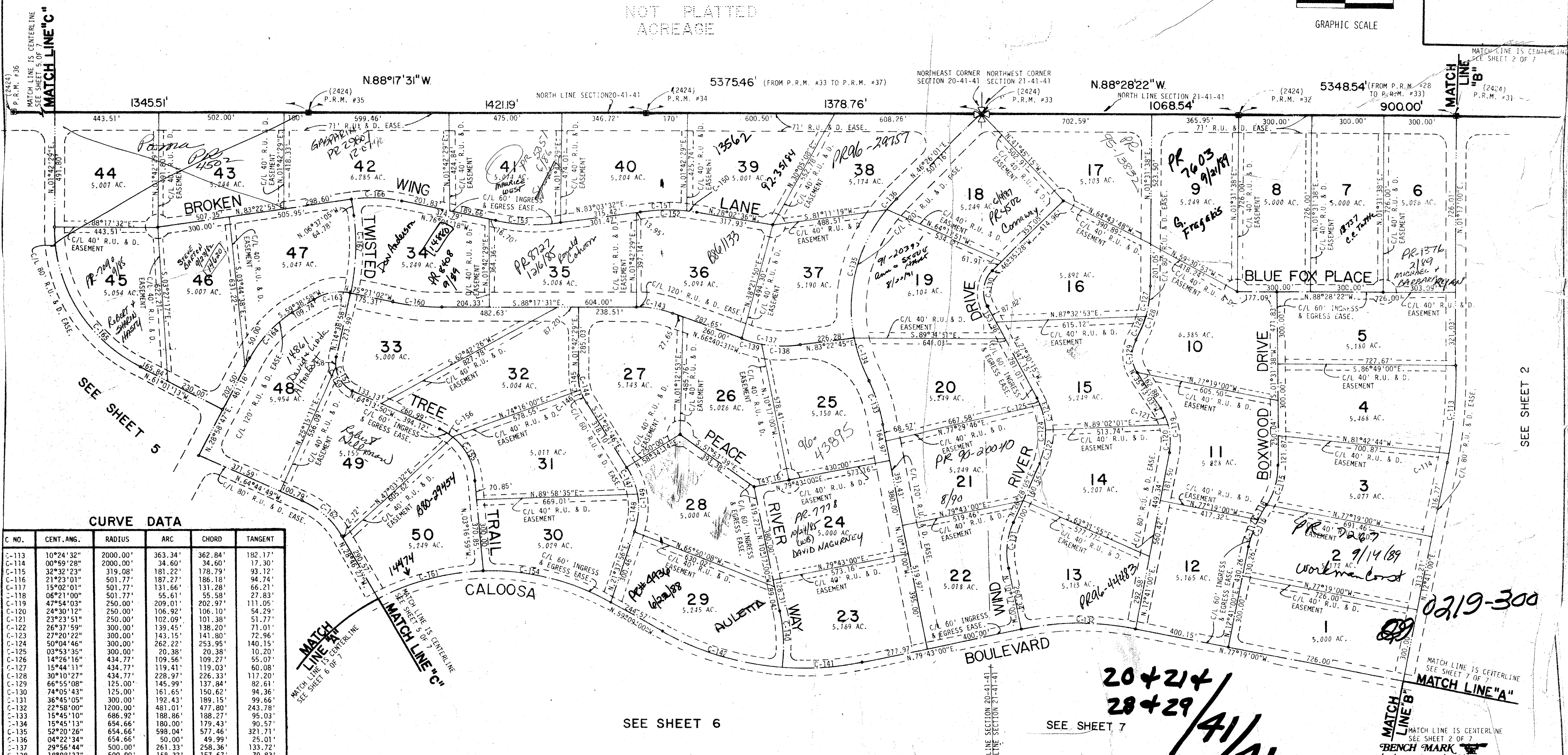
Lying in sections 20, 21,
28, 29, Township 41 So.,
Range 41 East, Palm
Beach County, Florida.

59

STATE OF FLORIDA
COUNTY OF PALM BEACH
THIS PLAT WAS FILED FOR
RECORD AT _____ M.
THIS _____ TH DAY OF _____
AD, 1978 AND DULY RE-
CORDED IN PLAT BOOK
ON PAGES _____ AND
JOHN B. DUNKLE, CLERK
CIRCUIT COURT
BY: _____ DC



NOT PLATTED
ACREAGE



CURVE DATA

C. NO.	CENT. ANG.	RADIUS	ARC	CHORD	TANGENT
C-113	10°24'32"	2000.00'	363.34'	362.84'	182.17'
C-114	00°59'28"	2000.00'	34.60'	34.60'	17.30'
C-115	32°32'23"	319.08'	181.22'	178.79'	93.12'
C-116	21°23'01"	501.77'	187.27'	186.18'	94.74'
C-117	15°02'01"	501.77'	131.66'	131.28'	66.21'
C-118	06°21'00"	501.77'	55.61'	55.58'	27.83'
C-119	47°54'03"	250.00'	209.01'	202.97'	111.05'
C-120	24°30'12"	250.00'	106.92'	106.10'	54.29'
C-121	23°23'51"	250.00'	102.09'	101.38'	51.77'
C-122	26°37'59"	300.00'	139.45'	138.20'	71.01'
C-123	27°20'22"	300.00'	143.15'	141.80'	72.96'
C-124	50°04'46"	300.00'	262.22'	253.95'	140.15'
C-125	03°53'35"	300.00'	20.38'	20.38'	10.20'
C-126	14°26'16"	434.77'	109.56'	109.27'	55.07'
C-127	15°44'11"	434.77'	119.41'	119.03'	60.08'
C-128	30°10'27"	434.77'	228.97'	226.33'	117.20'
C-129	66°55'08"	125.00'	145.99'	137.94'	92.61'
C-130	74°05'43"	125.00'	161.65'	150.62'	94.36'
C-131	36°45'05"	300.00'	192.43'	189.15'	99.66'
C-132	22°58'00"	1200.00'	481.01'	477.80'	243.78'
C-133	15°45'10"	686.92'	188.86'	188.27'	95.03'
C-134	15°45'13"	654.66'	180.00'	179.43'	90.57'
C-135	52°20'26"	654.66'	598.04'	577.46'	321.71'
C-136	04°22'34"	654.66'	50.00'	49.99'	25.01'
C-137	29°56'44"	500.00'	261.33'	258.36'	133.72'
C-138	18°08'37"	500.00'	158.33'	157.67'	79.83'
C-139	11°48'07"	500.00'	102.99'	102.81'	51.68'
C-140	15°45'23"	816.06'	224.42'	223.71'	112.92'
C-141	16°45'23"	1200.00'	330.00'	328.96'	166.05'
C-142	25°22'37"	1200.00'	531.49'	527.16'	270.18'
C-143	21°37'00"	400.00'	150.91'	150.02'	76.37'
C-144	33°08'15"	200.00'	115.67'	114.07'	59.50'
C-145	19°28'50"	200.00'	68.00'	67.67'	34.33'
C-146	13°39'25"	200.00'	47.67'	47.56'	23.95'
C-147	21°34'53"	300.00'	113.00'	112.33'	57.18'
C-148	31°28'50"	300.00'	164.83'	162.77'	84.55'
C-149	53°03'43"	300.00'	277.83'	268.01'	149.78'
C-150	02°04'00"	700.00'	25.25'	25.25'	12.63'
C-151	16°49'52"	700.00'	205.63'	204.89'	103.56'
C-152	18°53'51"	700.00'	230.88'	229.83'	116.50'
C-153	20°52'10"	800.00'	291.39'	289.78'	147.33'
C-154	31°30'46"	1000.00'	550.00'	543.09'	282.15'
C-155	52°31'03"	250.00'	229.15'	221.21'	123.33'
C-156	08°25'48"	250.00'	36.78'	36.75'	18.43'

CURVE DATA

C. NO.	CENT. ANG.	RADIUS	ARC	CHORD	TANGENT
C-157	78°52'49"	125.00'	172.09'	158.82'	102.82'
C-158	23°08'14"	125.00'	50.48'	50.14'	25.59'
C-159	55°44'34"	125.00'	121.61'	116.87'	66.10'
C-160	12°56'29"	900.00'	203.28'	202.85'	102.08'
C-161	25°46'59"	1000.00'	450.00'	446.71'	228.88'
C-162	35°58'22"	350.00'	219.75'	216.15'	113.63'
C-163	45°00'00"	200.00'	157.08'	153.07'	82.84'
C-164	30°40'12"	475.00'	254.26'	251.24'	130.26'
C-165	62°43'42"	656.51'	718.76'	683.40'	400.17'
C-166	20°32'47"	580.00'	207.99'	206.88'	105.18'
C-167	21°16'03"	880.00'	326.65'	324.77'	165.22'

THIS INSTRUMENT WAS PREPARED BY ROBERT J. WHIDDEN IN THE OFFICES OF BENCH MARK LAND SURVEYING AND MAPPING, INC., 2300 PALM BEACH LAKES BLVD., SUITE 209, WEST PALM BEACH, FLORIDA, PHONE 689-2111.

CALOOSA

- NOTE: 1. ALL RETURN RADII, WHEN INDICATED, ALONG EASEMENT LINE INTERSECTIONS FOR RECREATION, UTILITY AND DRAINAGE EASEMENTS, (R.U. & D. EASE.), ARE 50 FEET UNLESS OTHERWISE NOTED.
2. ALL RETURN RADII ALONG EASEMENT LINE INTERSECTIONS FOR INGRESS AND EGRESS EASEMENTS ARE 25 FEET, UNLESS OTHERWISE INDICATED.
3. ALL CULDESACS AS SHOWN HEREON SHALL HAVE A 50 FOOT RADIUS.
4. PERMANENT REFERENCE MONUMENTS DESIGNATED THUS:

CONRAD W. SCHAEFER CONSULTING ENGINEERS INC
PALM BEACH COUNTY FLORIDA

SECTION 4 OF CALOOSA

2/2/78 1"=200' CWS

77-042

34
59

20+21+
28+29
/41/41

0219-300

SEE SHEET 2

SEE SHEET 6

SEE SHEET 7

MATCH LINE IS CENTERLINE
SEE SHEET 5 OF 7
MATCH LINE "C"

MATCH LINE IS CENTERLINE
SEE SHEET 2 OF 7
MATCH LINE "B"

SEE SHEET 5

MATCH LINE "A"

MATCH LINE "C"

MATCH LINE "A"

MATCH LINE "B"