

# Caloosa 1st Addition

(a rural subdivision)

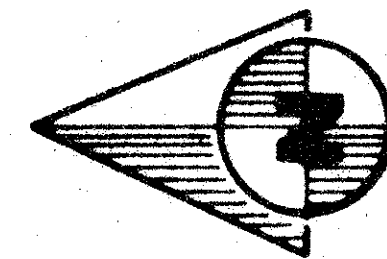
Lying in sections 20, 21,  
28, 29, Township 41 So.,  
Range 41 East, Palm  
Beach County, Florida.

58

STATE OF FLORIDA  
COUNTY OF PALM BEACH

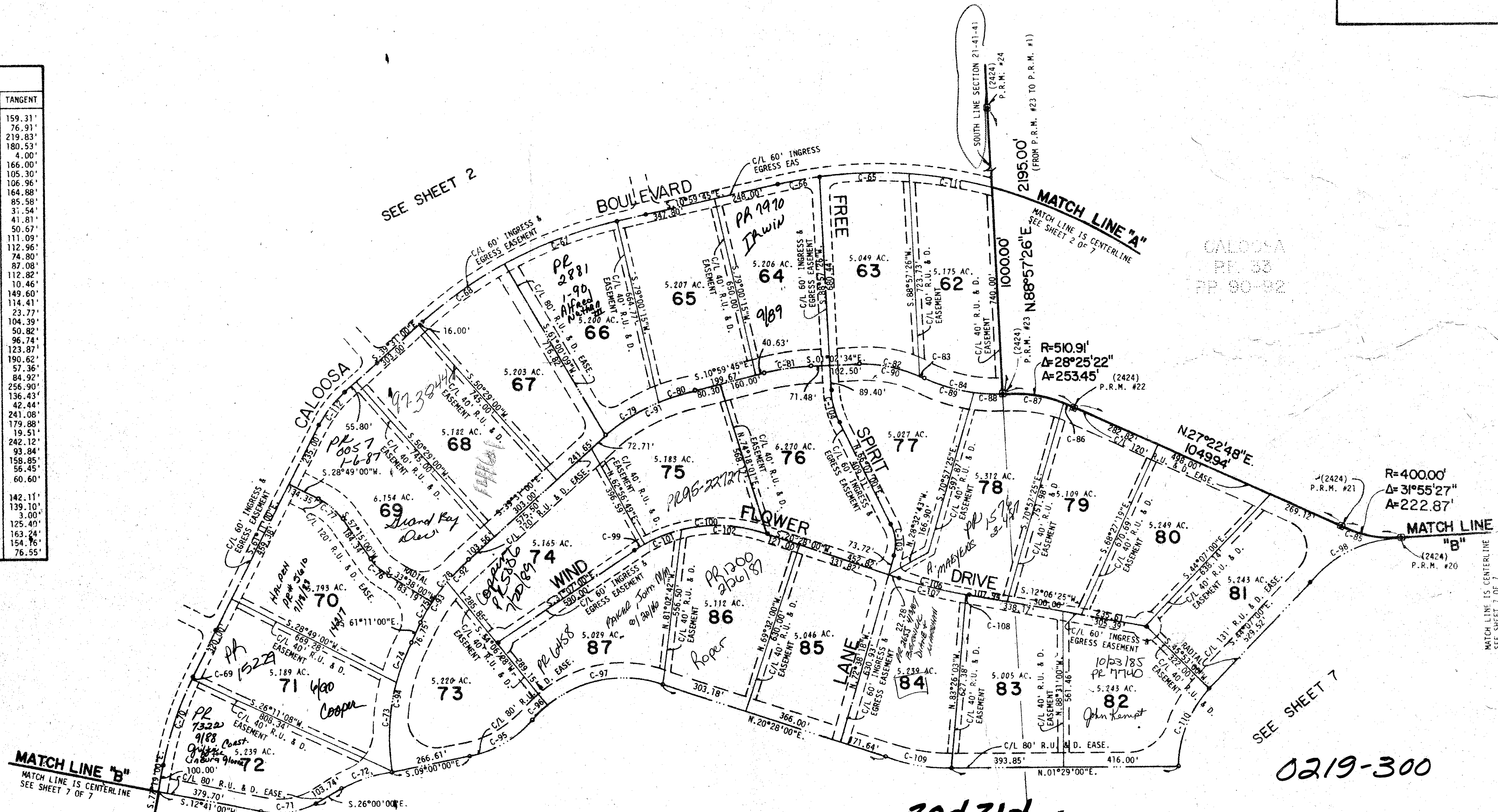
THIS PLAT WAS FILED FOR  
RECORD AT \_\_\_\_\_ M.  
THIS \_\_\_\_\_ TH DAY OF \_\_\_\_\_  
AD. 1978 AND DULY RE-  
CORDED IN PLAT BOOK  
ON PAGES \_\_\_\_\_ AND \_\_\_\_\_

JOHN B. DUNKLE, CLERK  
CIRCUIT COURT  
BY: \_\_\_\_\_ DC



GRAPHIC SCALE  
ONE INCH = TWO HUNDRED FEET

CURVE DATA					
C. NO.	CENT. ANG.	RADIUS	ARC	CHORD	TANGENT
C-65	11°06'48"	1637.50'	317.61'	317.12'	159.31'
C-66	05°22'42"	1637.50'	153.71'	153.65'	76.91'
C-67	15°38'46"	1600.00'	436.92'	435.57'	219.83'
C-68	12°52'29"	1600.00'	359.53'	358.78'	180.53'
C-69	00°22'55"	1200.00'	8.00'	8.00'	4.00'
C-70	15°45'05"	1200.00'	329.90'	328.86'	166.00'
C-71	38°41'00"	300.00'	202.55'	190.72'	105.30'
C-72	17°00'00"	715.67'	212.34'	211.57'	106.96'
C-73	24°47'50"	750.00'	324.59'	322.07'	164.88'
C-74	13°01'10"	750.00'	170.43'	170.06'	85.58'
C-75	04°49'00"	750.00'	63.05'	63.03'	31.54'
C-76	23°37'00"	200.00'	82.44'	81.86'	41.81'
C-77	28°26'00"	200.00'	99.26'	98.24'	50.67'
C-78	16°51'00"	750.00'	220.57'	219.77'	111.09'
C-79	17°07'47"	750.00'	224.23'	223.39'	112.96'
C-80	11°23'28"	750.00'	149.11'	148.86'	74.80'
C-81	09°57'11"	1000.00'	173.71'	173.49'	87.08'
C-82	25°35'17"	496.81'	221.87'	220.03'	112.82'
C-83	02°24'43"	496.81'	20.91'	20.91'	10.46'
C-84	28°00'00"	600.00'	293.22'	290.31'	149.60'
C-85	31°55'27"	400.00'	222.87'	220.00'	114.41'
C-86	05°19'37"	510.91'	47.50'	47.49'	23.77'
C-87	23°05'45"	510.91'	205.95'	204.56'	104.39'
C-88	09°40'57"	600.00'	101.40'	101.28'	50.82'
C-89	18°19'03"	600.00'	191.82'	191.00'	96.74'
C-90	28°00'00"	496.81'	242.79'	240.38'	123.87'
C-91	28°31'15"	750.00'	373.34'	369.50'	190.62'
C-92	08°44'47"	750.00'	114.49'	114.38'	57.36'
C-93	12°55'13"	750.00'	169.13'	168.77'	84.92'
C-94	37°49'00"	750.00'	495.02'	486.08'	256.90'
C-95	37°40'00"	400.00'	262.96'	258.25'	136.43'
C-96	10°46'28"	450.00'	84.62'	84.50'	42.44'
C-97	56°21'32"	450.00'	442.64'	425.01'	241.08'
C-98	39°34'21"	500.00'	345.34'	368.51'	179.88'
C-99	04°03'49"	550.00'	39.01'	39.00'	19.51'
C-100	47°31'11"	550.00'	456.16'	443.19'	242.12'
C-101	19°21'51"	550.00'	185.88'	185.00'	93.84'
C-102	32°13'09"	550.00'	309.28'	305.22'	158.85'
C-103	41°14'42"	150.00'	107.98'	105.66'	56.45'
C-104	22°50'26"	300.00'	119.59'	118.80'	60.60'
C-106	08°21'35"	1944.58'	283.72'	283.47'	142.11'
C-107	08°10'59"	1944.58'	277.72'	277.49'	139.10'
C-108	00°10'36"	1944.58'	6.00'	6.00'	3.00'
C-109	18°59'00"	750.00'	248.49'	247.36'	125.40'
C-110	44°24'00"	400.00'	309.97'	302.27'	163.24'
C-111	10°45'23"	1637.50'	307.42'	306.97'	154.76'
C-112	21°40'00"	400.00'	151.26'	150.36'	76.55'



MATCH LINE "A"  
MATCH LINE IS CENTERLINE  
SEE SHEET 2 OF 7

MATCH LINE "B"  
MATCH LINE IS CENTERLINE  
SEE SHEET 7 OF 7

SEE SHEET 7

CALOOSA

204217  
28429 / 41/41

0219-300

- NOTE:
1. ALL RETURN RADII, WHEN INDICATED, ALONG EASEMENT LINE INTERSECTIONS FOR RECREATION, UTILITY AND DRAINAGE EASEMENTS, (R.U. & D. EASE.), ARE 50 FEET UNLESS OTHERWISE NOTED.
  2. ALL RETURN RADII ALONG EASEMENT LINE INTERSECTIONS FOR INGRESS AND EGRESS EASEMENTS ARE 25 FEET, UNLESS OTHERWISE INDICATED.
  3. ALL CULDESACS AS SHOWN HEREON SHALL HAVE A 50 FOOT RADIUS.
  4. PERMANENT REFERENCE MONUMENTS DESIGNATED THUS: [Symbol]

BENCH MARK  
land surveying and mapping, inc.

CONRAD W. SCHAEFER CONSULTING ENGINEERS, INC. PALM BEACH COUNTY FLORIDA			
34			
SECTION 3 OF CALOOSA			
58			
DESIGNED CWS	DRAWN WSK	CHECKED RJM	JOB NO. 77-042
DATE 2/2/78	SCALE 1"=200'	APPROVED CWS	FILE NO. [Blank]