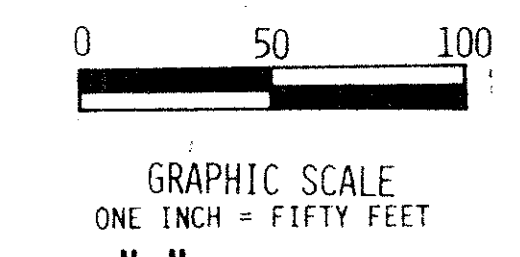
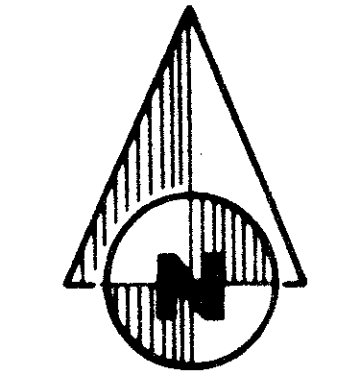


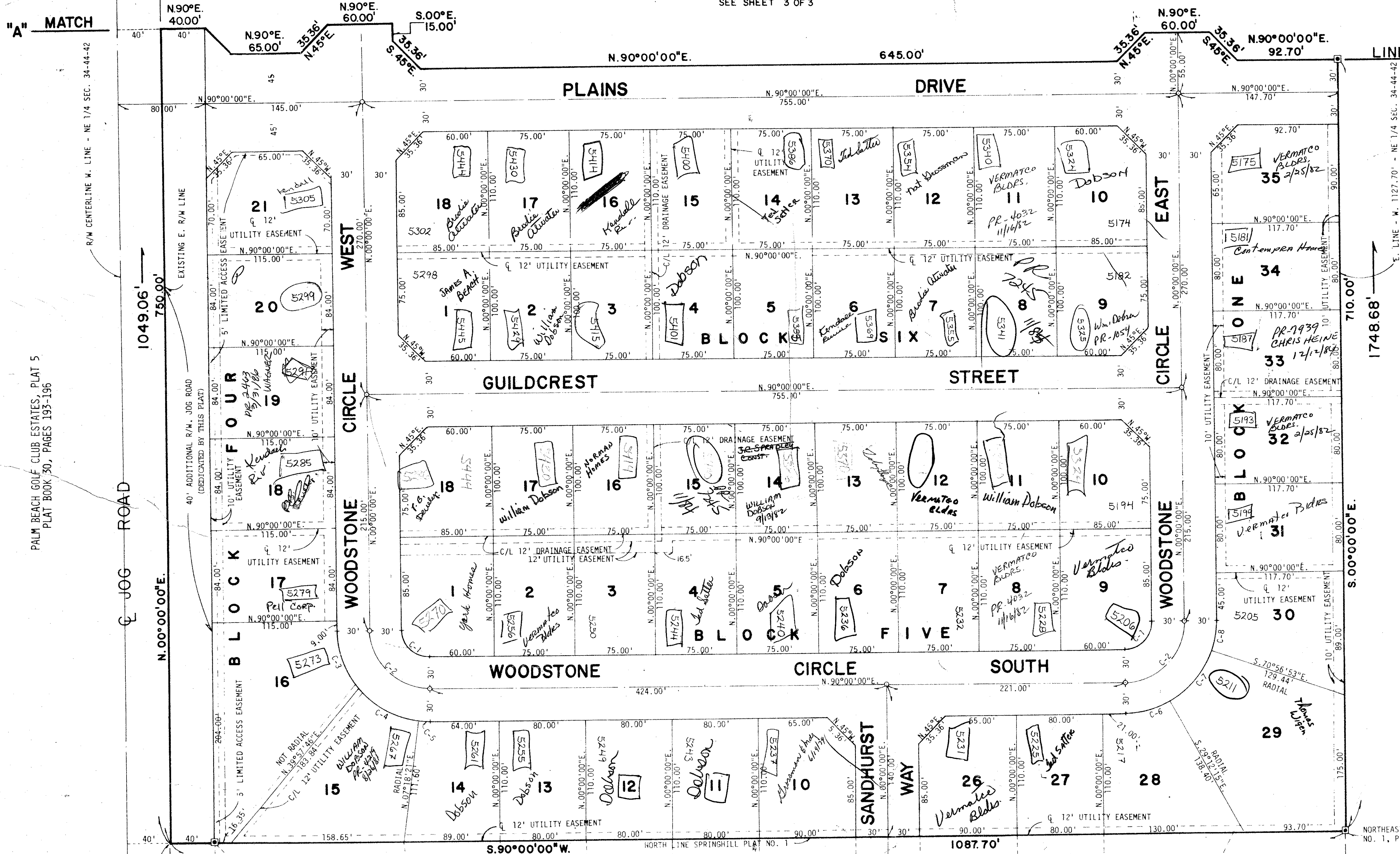
STATE OF FLORIDA  
 COUNTY OF PALM BEACH  
 THIS PLAT WAS FILED FOR  
 RECORD AT \_\_\_\_\_ M.  
 THIS \_\_\_\_ TH DAY OF \_\_\_\_\_  
 AD, 1978 AND DULY RE-  
 CORDED IN PLAT BOOK  
 ON PAGES \_\_\_\_ AND \_\_\_\_  
 JOHN B. DUNKLE, CLERK  
 CIRCUIT COURT  
 BY: \_\_\_\_\_ DC



# Springhill Plat No. 2

Lying in the Northeast 1/4 of Section 34,  
 Township 44 South, Range 42 East, Palm  
 Beach County, Florida-

SEE SHEET 3 OF 3



PALM BEACH GOLF CLUB ESTATES, PLAT 5  
 PLAT BOOK 30, PAGES 193-196

NORTHWEST CORNER SPRINGHILL PLAT  
 NO. 1, P.B. 33, PP. 170-171

TURNOUT REQUIRED

1000-125  
 34-43

C. NO.	CENT. ANG.	RADIUS	ARC	CHORD	TANGENT
C. 1	90°00'00"	25.00'	39.27'	35.36'	25.00'
C. 2	90°00'00"	55.00'	86.39'	77.78'	55.00'
C. 3	39°31'21"	85.00'	58.63'	57.48'	30.54'
C. 4	43°10'18"	85.00'	64.05'	62.54'	33.63'
C. 5	29°12'15"	85.00'	10.84'	10.83'	5.43'
C. 6	29°12'15"	85.00'	43.33'	42.86'	22.14'
C. 7	41°44'38"	85.00'	61.93'	60.57'	32.41'
C. 8	19°03'07"	85.00'	28.26'	28.13'	14.26'

SPRING HILL PLAT NO. 1  
 (PLAT BOOK 33, PAGES 170 & 171)

# SPRINGHILL

# #2

**BENCH MARK**  
 land surveying and mapping, inc.  
**WANTMAN & ASSOCIATES, INC.**  
 CONSULTING ENGINEERS  
 WEST PALM BEACH FLORIDA

34-43  
 142  
 SPRING HILL PLAT NO. 2

NO.	DATE	DESCRIPTION	BY	DRAWN	FIELD BOOK	DATE	JOB NO.	SHEET
1				WS	NO.	1978	2900	2
2				DESIGNED	CHECKED	SCALE	DRAWING NO.	3
		REVISIONS				1"=50'		