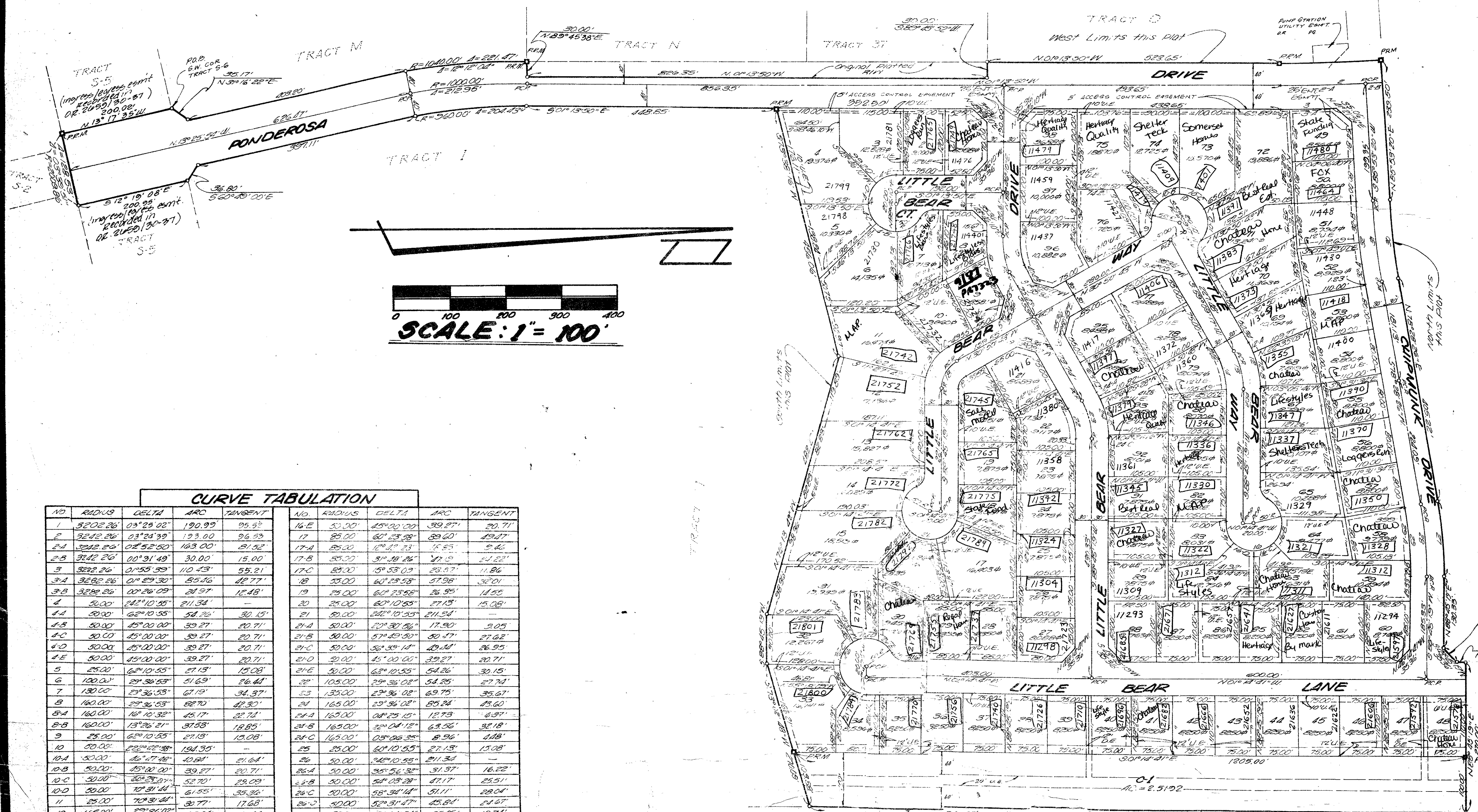
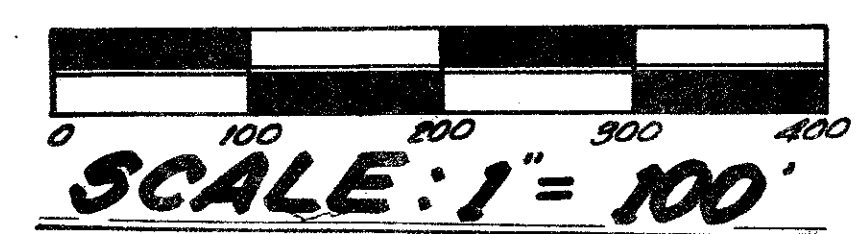


CIMARRON SECTION ONE

being a resubdivision of portions
of Tracts J, S-5 and S-6 of
BOUNDARY PLAT OF ORIOLE COUNTRY (PLAT BOOK 32
PAGE 5, 175-180)
Sections 23 and 26, Township 47 South, Range 41 East
Palm Beach County, Florida



This instrument prepared by Tom Schnars
KEITH and SCHNARS
LAND SURVEYING SCIENCES, P.A.
Fort Lauderdale, Florida



CURVE TABULATION				CURVE TABULATION			
NO.	RADIUS	DELTA	TANGENT	NO.	RADIUS	DELTA	TANGENT
1	3202.26	03°23'02"	190.99	16-E	30.00	45°00'00"	39.27
2	3242.26	03°24'39"	193.00	17	35.00	60°23'33"	29.27
3	3282.26	03°26'16"	195.00	17-A	35.00	60°23'33"	29.27
4	3322.26	03°27'53"	197.00	17-B	35.00	60°23'33"	29.27
5	3362.26	03°29'30"	199.00	17-C	35.00	60°23'33"	29.27
6	3402.26	03°31'07"	201.00	18	35.00	60°23'33"	29.27
7	3442.26	03°32'44"	203.00	19	35.00	60°23'33"	29.27
8	3482.26	03°34'21"	205.00	20	35.00	60°23'33"	29.27
9	3522.26	03°35'58"	207.00	21	35.00	60°23'33"	29.27
10	3562.26	03°37'35"	209.00	21-A	35.00	60°23'33"	29.27
11	3602.26	03°39'12"	211.00	21-B	35.00	60°23'33"	29.27
12	3642.26	03°40'49"	213.00	21-C	35.00	60°23'33"	29.27
13	3682.26	03°42'26"	215.00	21-D	35.00	60°23'33"	29.27
14	3722.26	03°44'03"	217.00	21-E	35.00	60°23'33"	29.27
15	3762.26	03°45'40"	219.00	22	35.00	60°23'33"	29.27
16	3802.26	03°47'17"	221.00	23	35.00	60°23'33"	29.27
17	3842.26	03°48'54"	223.00	24	35.00	60°23'33"	29.27
18	3882.26	03°50'31"	225.00	24-A	35.00	60°23'33"	29.27
19	3922.26	03°52'08"	227.00	24-B	35.00	60°23'33"	29.27
20	3962.26	03°53'45"	229.00	24-C	35.00	60°23'33"	29.27
21	4002.26	03°55'22"	231.00	25	35.00	60°23'33"	29.27
22	4042.26	03°56'59"	233.00	26	35.00	60°23'33"	29.27
23	4082.26	03°58'36"	235.00	26-A	35.00	60°23'33"	29.27
24	4122.26	03°59'13"	237.00	26-B	35.00	60°23'33"	29.27
25	4162.26	04°00'50"	239.00	26-C	35.00	60°23'33"	29.27
26	4202.26	04°02'27"	241.00	27	35.00	60°23'33"	29.27
27	4242.26	04°04'04"	243.00	28	35.00	60°23'33"	29.27
28	4282.26	04°05'41"	245.00	29	35.00	60°23'33"	29.27
29	4322.26	04°07'18"	247.00	29-A	35.00	60°23'33"	29.27
30	4362.26	04°08'55"	249.00	29-B	35.00	60°23'33"	29.27
31	4402.26	04°10'32"	251.00	29-C	35.00	60°23'33"	29.27
32	4442.26	04°12'09"	253.00	30	35.00	60°23'33"	29.27
33	4482.26	04°13'46"	255.00	31	35.00	60°23'33"	29.27
34	4522.26	04°15'23"	257.00	32	35.00	60°23'33"	29.27
35	4562.26	04°17'00"	259.00	32-A	35.00	60°23'33"	29.27
36	4602.26	04°18'37"	261.00	32-B	35.00	60°23'33"	29.27
37	4642.26	04°20'14"	263.00				
38	4682.26	04°21'51"	265.00				
39	4722.26	04°23'28"	267.00				
40	4762.26	04°25'05"	269.00				
41	4802.26	04°26'42"	271.00				
42	4842.26	04°28'19"	273.00				
43	4882.26	04°29'56"	275.00				
44	4922.26	04°31'33"	277.00				
45	4962.26	04°33'10"	279.00				
46	5002.26	04°34'47"	281.00				
47	5042.26	04°36'24"	283.00				
48	5082.26	04°38'01"	285.00				
49	5122.26	04°39'38"	287.00				
50	5162.26	04°41'15"	289.00				
51	5202.26	04°42'52"	291.00				
52	5242.26	04°44'29"	293.00				
53	5282.26	04°46'06"	295.00				
54	5322.26	04°47'43"	297.00				
55	5362.26	04°49'20"	299.00				
56	5402.26	04°50'57"	301.00				
57	5442.26	04°52'34"	303.00				
58	5482.26	04°54'11"	305.00				
59	5522.26	04°55'48"	307.00				
60	5562.26	04°57'25"	309.00				
61	5602.26	04°59'02"	311.00				
62	5642.26	05°00'39"	313.00				
63	5682.26	05°02'16"	315.00				
64	5722.26	05°03'53"	317.00				
65	5762.26	05°05'30"	319.00				
66	5802.26	05°07'07"	321.00				
67	5842.26	05°08'44"	323.00				
68	5882.26	05°10'21"	325.00				
69	5922.26	05°11'58"	327.00				
70	5962.26	05°13'35"	329.00				
71	6002.26	05°15'12"	331.00				
72	6042.26	05°16'49"	333.00				
73	6082.26	05°18'26"	335.00				
74	6122.26	05°20'03"	337.00				
75	6162.26	05°21'40"	339.00				
76	6202.26	05°23'17"	341.00				
77	6242.26	05°24'54"	343.00				
78	6282.26	05°26'31"	345.00				
79	6322.26	05°28'08"	347.00				
80	6362.26	05°29'45"	349.00				
81	6402.26	05°31'22"	351.00				
82	6442.26	05°32'59"	353.00				
83	6482.26	05°34'36"	355.00				
84	6522.26	05°36'13"	357.00				
85	6562.26	05°37'50"	359.00				
86	6602.26	05°39'27"	361.00				
87	6642.26	05°41'04"	363.00				
88	6682.26	05°42'41"	365.00				
89	6722.26	05°44'18"	367.00				
90	6762.26	05°45'55"	369.00				
91	6802.26	05°47'32"	371.00				
92	6842.26	05°49'09"	373.00				
93	6882.26	05°50'46"	375.00				
94	6922.26	05°52'23"	377.00				
95	6962.26	05°54'00"	379.00				
96	7002.26	05°55'37"	381.00				
97	7042.26	05°57'14"	383.00				
98	7082.26	05°58'51"	385.00				
99	7122.26	05°59'28"	387.00				
100	7162.26	06°01'05"	389.00				

1000-118
344