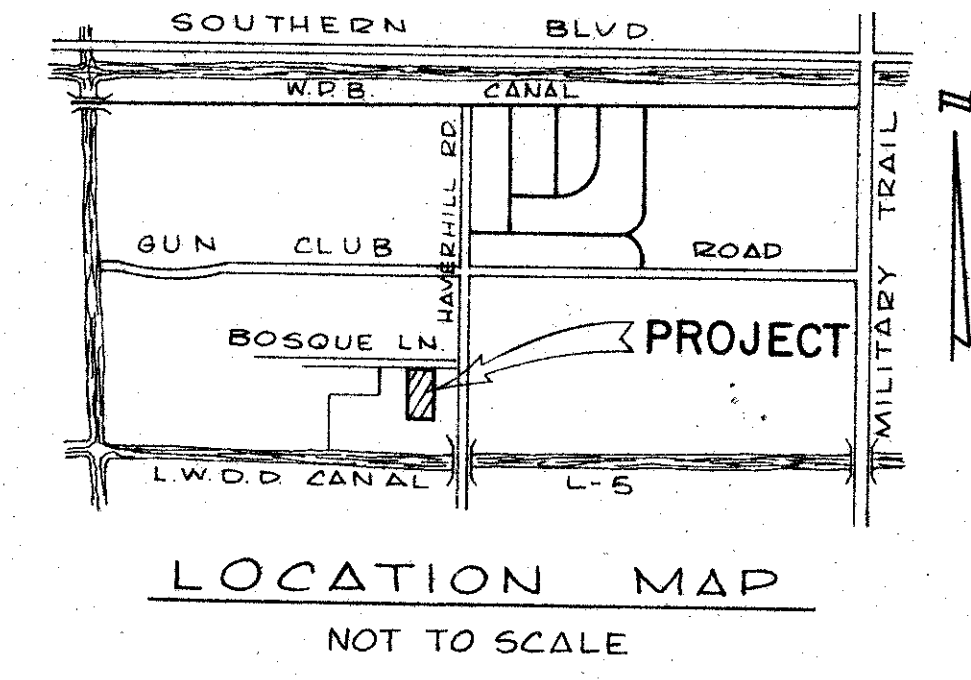


PLAT NO. 2 "THE FOREST HOMES"

IN THE NORTHEAST QUARTER (NE 1/4) OF SECTION 2, TOWNSHIP 44 SOUTH, RANGE 42 EAST.
PALM BEACH COUNTY, FLORIDA

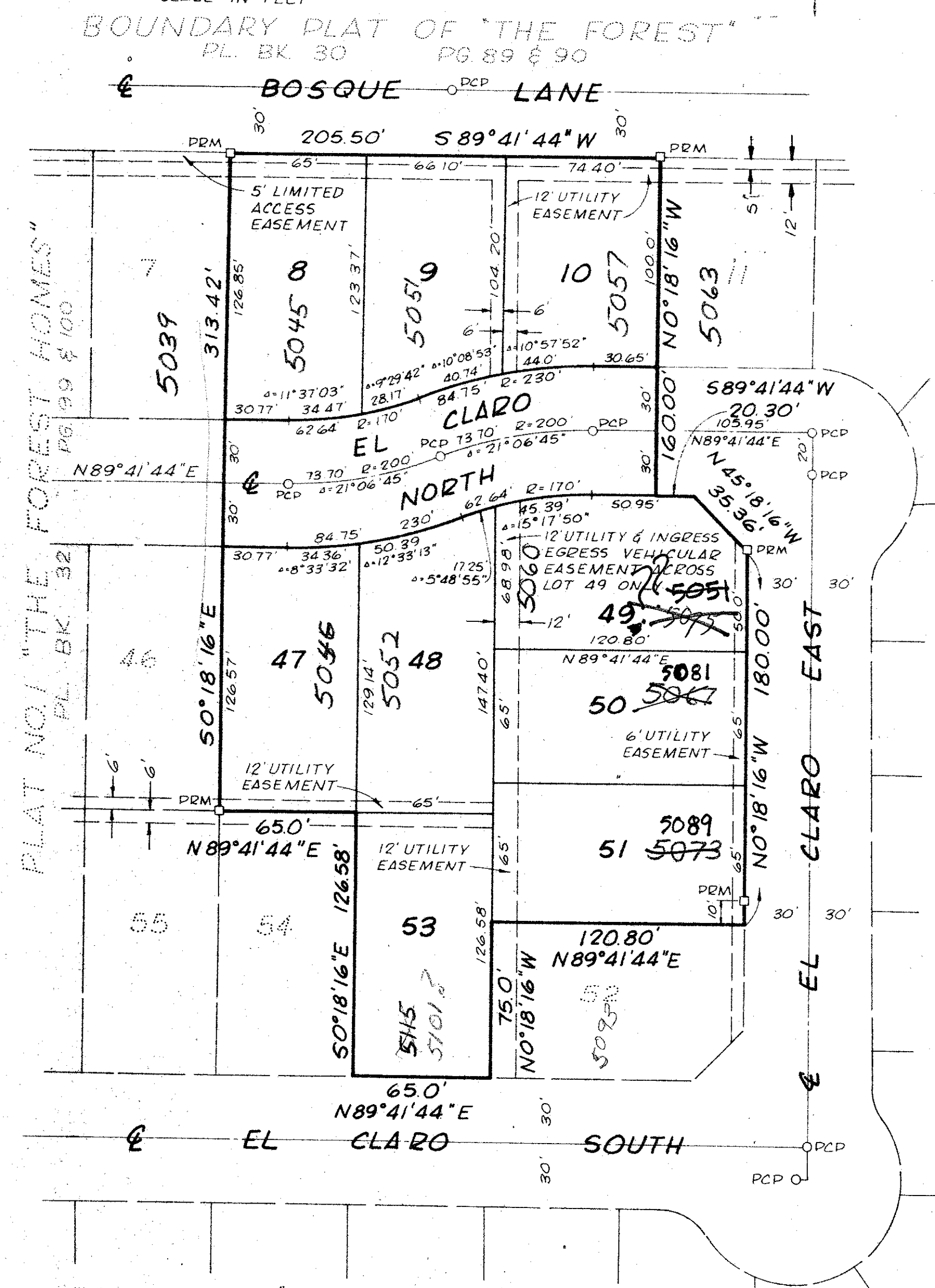
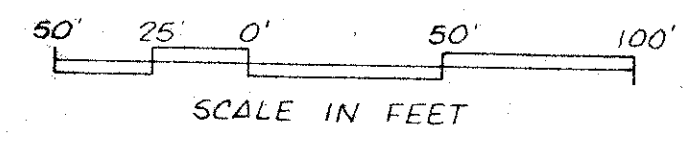
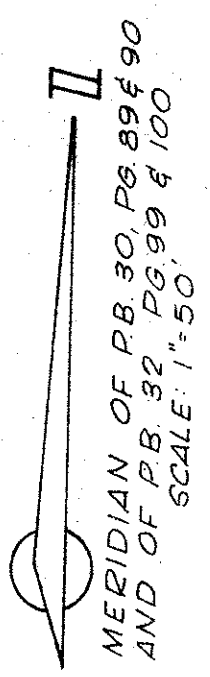
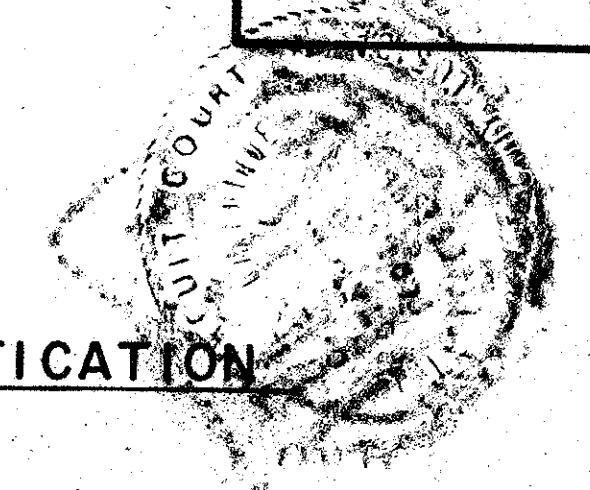
BEING A REPLAT OF TRACTS "G", "O" AND A PART OF TRACT "B", BOUNDARY PLAT
OF "THE FOREST", AS SAME IS RECORDED IN PLAT BOOK 30 AT PAGES 89 AND 90.

ONE SHEET ONLY



143

COUNTY OF PALM BEACH
STATE OF FLORIDA
This Plat was filed for record at 9:07 A.M.
this 27th day of October
19 77, and duly recorded in Plat Book No.
33 on page 143
JOHN P. DUNKLE, Clerk Circuit Court
By Lyle Smith



DEDICATION

KNOW ALL MEN BY THESE PRESENTS that IMPERIAL INDUSTRIAL GROUP, INC., a Florida Corporation, owner of the lands shown hereon, being in the Northeast Quarter (NE 1/4) of Section 2, Township 44 South, Range 42 East, Palm Beach County, Florida, shown hereon as PLAT NO. 2 "THE FOREST HOMES" and as described hereon, has caused the same to be surveyed and platted as shown hereon and does hereby dedicate as follows:

- STREETS**
El Claro North, as shown hereon, is hereby dedicated to the Board of County Commissioners of Palm Beach County, Florida, for the perpetual use of the public for proper purposes.
- EASEMENTS**
 - The utility easements as shown hereon are hereby dedicated in perpetuity for the construction, operation and maintenance of utilities.
 - The drainage easements as shown hereon are hereby dedicated in perpetuity for the construction, operation and maintenance of drainage facilities.
 - The access control easements, as shown hereon, are hereby dedicated to the Board of County Commissioners of Palm Beach County, Florida, for the purposes of control and jurisdiction over access rights.

IN WITNESS WHEREOF the above named IMPERIAL INDUSTRIAL GROUP, INC., has caused these presents to be signed by its Vice President and attested to by its Secretary and its Corporate Seal to be affixed hereto, by and with the authority of its Board of Directors this 30 day of Sept, A.D. 19 77.

IMPERIAL INDUSTRIAL GROUP, INC., a Corporation of the State of Florida.
Attest: Bruce Lazar Secretary
Matthew Spensadel Vice President

MORTGAGEE'S CONSENT

STATE OF FLORIDA
COUNTY OF BROWARD

The undersigned hereby certifies that it is the holder of two mortgages upon the property described hereon and does hereby join in and consent to the dedication of the land described in the dedication hereon by the owner thereof and agrees that its mortgages, recorded in O.R.B. 2681 at pages 663-672 and O.R.B. 2681 at pages 673-684, Public Records of Palm Beach County, Florida, shall be subordinated to the said dedication shown hereon.

IN WITNESS WHEREOF, DCA OF PALM BEACH, INC., a Florida Corporation, has caused these presents to be signed by its PRESIDENT and attested to by its SECRETARY and its corporate seal to be affixed hereon by and with the authority of its Board of Directors this 30 day of Sept, A.D. 19 77.

DCA OF PALM BEACH, INC., a Corporation of the State of Florida.
By: James J. Elkins President
Attest: Louis A. Clark Secretary

TITLE CERTIFICATION

STATE OF FLORIDA
COUNTY OF DADE

I, BRUCE E. LAZAR, a duly licensed attorney in the State of Florida, do hereby certify that I have examined the title to the heron described property; and that I find the title to the property is vested in IMPERIAL INDUSTRIAL GROUP, INC.; that the current taxes have been paid; and that I find that the property is encumbered by the mortgages shown hereon; and that I find all mortgages are shown and are true and correct.

DATE: SEPT. 30, 1977 BY: Bruce E. Lazar Attorney at Law

ACKNOWLEDGMENT

STATE OF FLORIDA
COUNTY OF BROWARD

BEFORE ME personally appeared Louis A. Clark and Luis A. Clark, to me well known, and known to me to be the individuals described in and who executed the foregoing instrument, as PRESIDENT and SECRETARY of the DCA OF PALM BEACH, INC., a FLORIDA CORPORATION, and they severally acknowledged to and before me that they executed such instrument as such officers of said corporation and that the seal affixed to the foregoing instrument is the corporate seal of said corporation and that it was affixed to said instrument by due and regular corporate authority and that said instrument is the free act and deed of said Corporation.

WITNESS my hand and official seal, this 30 day of SEPT., A.D. 19 77.

By: James J. Elkins Notary Public
My Commission Expires:

COUNTY APPROVALS

This plat is hereby approved for record this 25 day of Oct, A.D. 19 77.

By: Herbert F. Kahlert Engineer
Palm Beach County, Florida

BOARD OF COUNTY COMMISSIONERS
PALM BEACH COUNTY, FLORIDA

This plat is hereby approved for record this 25 day of October, A.D. 19 77.

By: Lake Lytal Chairman
Board of County Commissioners

ATTEST: John P. Dunkle, CLERK

By: Manly J. Boutin Deputy

ACKNOWLEDGEMENT

STATE OF FLORIDA
COUNTY OF PALM BEACH DADE

BEFORE ME personally appeared MATTHEW SPENSADL and BRUCE LAZAR, to me well known, and known to me to be the individuals described in and who executed the foregoing instrument as VICE PRESIDENT and SECRETARY of IMPERIAL INDUSTRIAL GROUP, INC., a FLORIDA CORPORATION, and they severally acknowledged to and before me that they executed such instrument as such officers of said corporation and that the seal affixed to the foregoing instrument is the corporate seal of said corporation and that it was affixed to said instrument by due and regular corporate authority and that said instrument is the free act and deed of said corporation.

WITNESS my hand and official seal, this 30 day of Sept, A.D. 19 77.

By: Manly J. Boutin Notary Public
My Commission Expires:

NOTES

- Permanent Reference Monuments (P.R.M.'s) are designated thus: -PRM.
- Permanent Control Points (P.C.P.'s) are designated thus: -O-P.C.P.
- Bearings cited herein are in the meridian of PLAT NO. 1 "THE FOREST HOMES". (P.B. 32, Pg. 99 & 100)
- Building setback lines shall be as required by Palm Beach County Zoning Regulations.
- There shall be no buildings or other structures placed on utility easements.
- There shall be no building or any kind of construction or trees or shrubs placed on drainage easements.
- In instances where drainage and utility easements intersect the areas within the intersection are drainage and utility easements. Construction and maintenance of utility facilities shall not interfere with the drainage facilities within these areas of intersection.

SURVEYOR'S CERTIFICATION

I hereby certify that the plat shown hereon is a true and correct representation of a survey made under my responsible direction and supervision, and that the survey is accurate to the best of my knowledge and belief. The P.R.M.'s, permanent reference monuments and (P.C.P.'s) permanent control points have been placed as required by law; and further that the survey data comply with all the requirements of Chapter 177, Florida Statutes, and amended and Ordinances of Palm Beach County, Florida.

DATE: October 4, 1977 BY: David M. White
David M. White, P.E.S.
Florida Certificate No. 2201

0243-301

DESCRIPTION

A certain 1.9629 acre parcel of land in the Northeast Quarter (NE 1/4) of Section 2, Township 44 South, Range 42 East, Palm Beach County, Florida, more particularly described as follows:

All of Tracts "G" and "O" and all of that part of Tract "B" (as same are shown on the BOUNDARY PLAT OF "THE FOREST" recorded in Plat Book 30 at Pages 89 and 90, Public Records of Palm Beach County, Florida), lying southerly of Bosque Lane as shown on said BOUNDARY PLAT OF "THE FOREST", westerly of Lots 11 and 52 and El Claro East, northerly of Lots 52 and 54 and El Claro South, and easterly of Lots 7, 46 and 54 and El Claro North as said lots and roads are shown on PLAT NO. 1 "THE FOREST HOMES", recorded in Plat Book 32 at Pages 99 and 100, Public Records of Palm Beach County, Florida.

THE FOREST

Field Book	No. C-166 Pg. 12
Design	D. M. White
Drawn	C. Boss
Checked	D. M. White
Field	R. MATTHEW

ROBERT E. OWEN & ASSOCIATES, INC.
ENGINEERS - PLANNERS - SURVEYORS
WEST PALM BEACH
FLORIDA

PLAT NO. 2

"THE FOREST HOMES"

ONE SHEET ONLY

33