

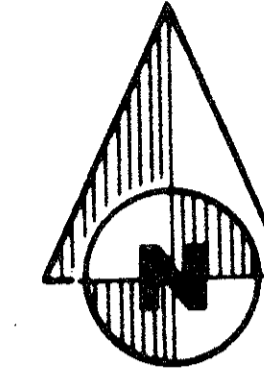
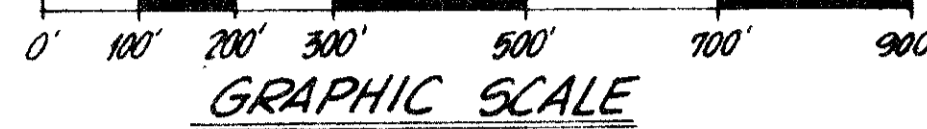
# HOMELAND

A SUBDIVISION OF ALL OF SECTION 35, TOWNSHIP 44 SOUTH, RANGE 41 EAST; ALL OF TRACT 38, HIATUS BETWEEN TOWNSHIPS 44 AND 45 SOUTH, RANGE 41 EAST; AND PART OF SECTION 2, TOWNSHIP 45 SOUTH, RANGE 41 EAST  
PALM BEACH COUNTY, FLORIDA

SHEET 7 OF 7 SHEETS

SCALE: 1" = 200'

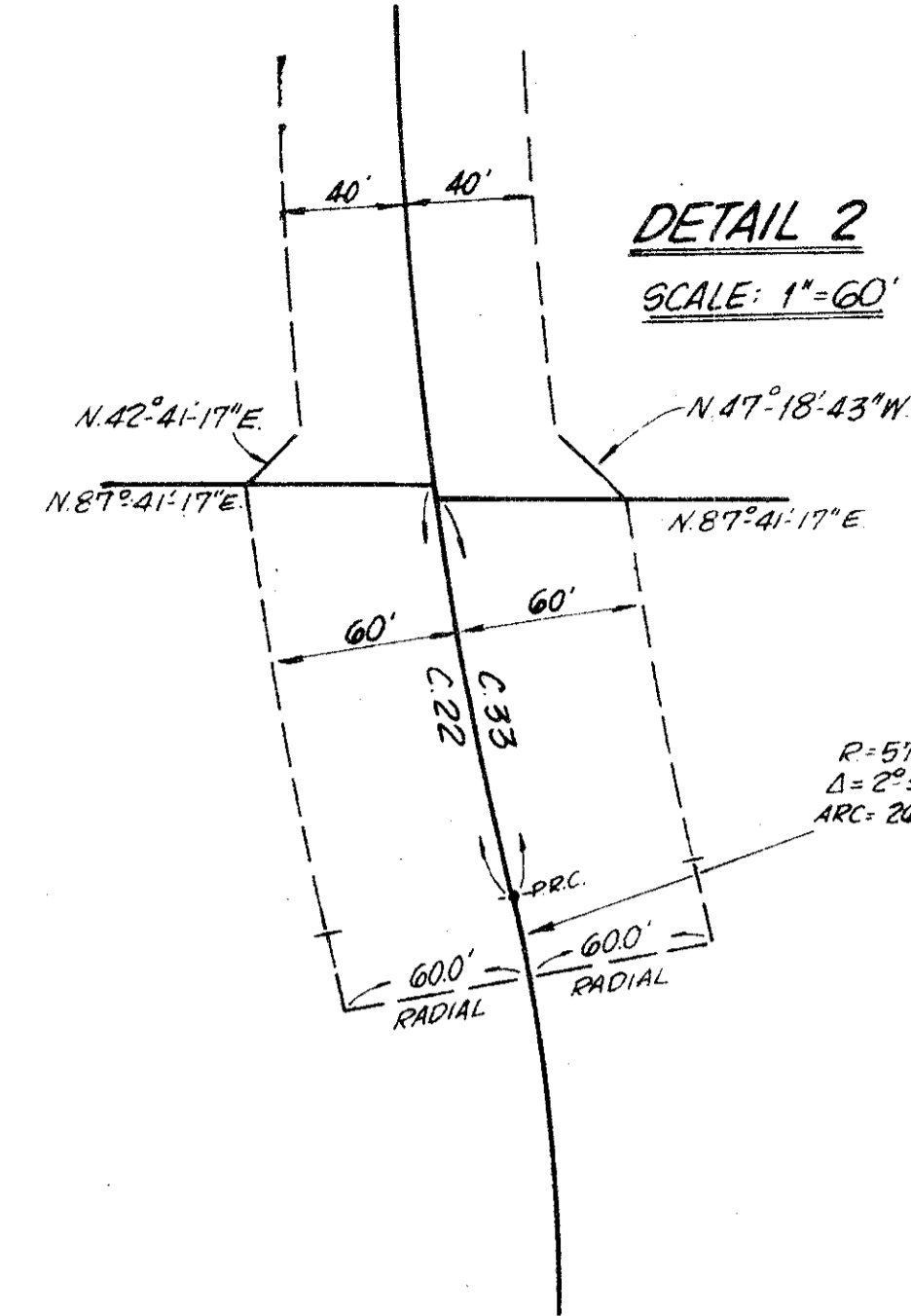
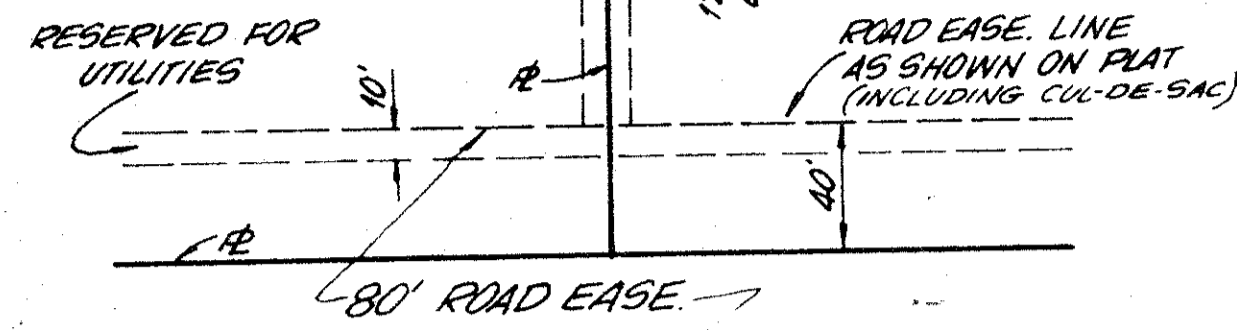
JUNE 1977



117

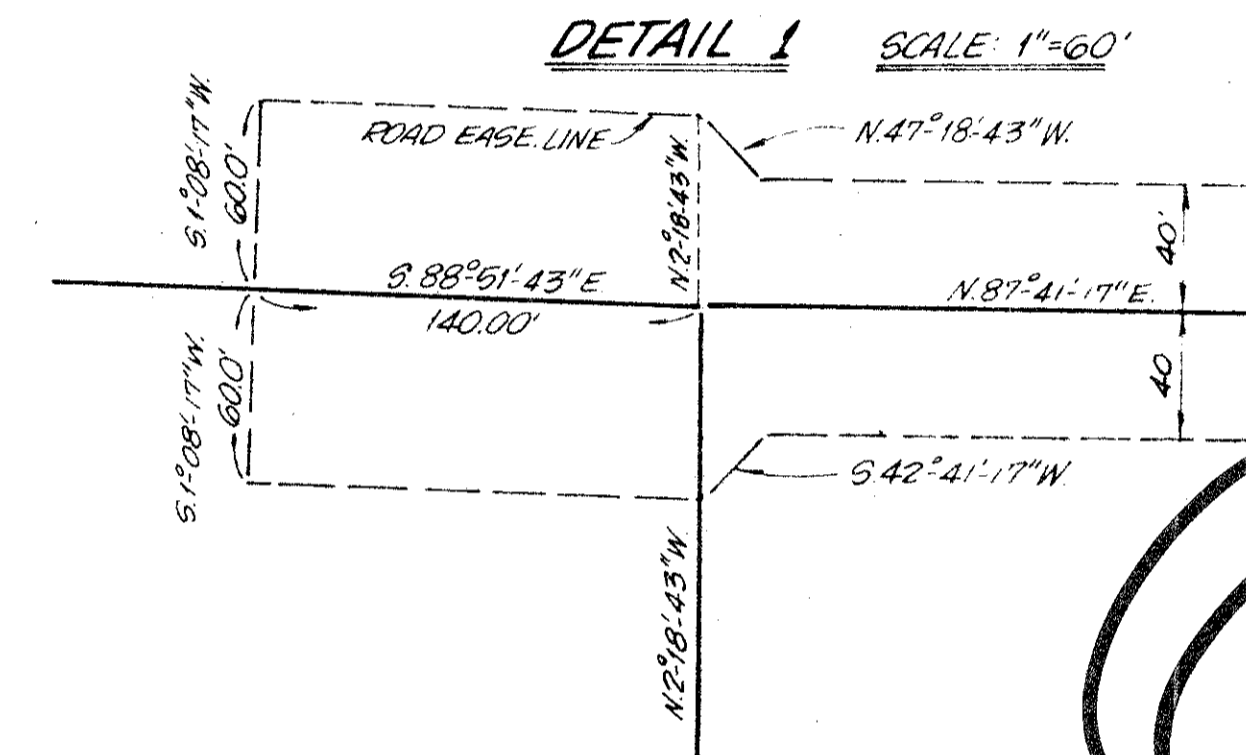
TYPICAL EASEMENTS

SCALE: 1" = 60'



GENERAL NOTES

- (SEE NOTE 5, OF SURVEYOR NOTES - PAGE 1 OF 7)
- DENOTES PERMANENT REFERENCE MONUMENTS (PRM'S)
- BEARINGS ARE REFERENCED TO AN ASSUMED BEARING OF S. 89° 57' 50" E. ALONG THE NORTH LINE OF SECTION 35, TOWNSHIP 44 S., RANGE 41 E.
- ALL LOT DIMENSIONS ARE TO LOT LINE INTERSECTION AND NOT TO EASEMENT LINE
- BUILDING SETBACK LINES SHALL BE AS REQUIRED BY PALM BEACH COUNTY ZONING REGULATIONS
- THERE SHALL BE NO BUILDINGS OR ANY KIND OF CONSTRUCTION OR TREES OR SHRUBS PLACED ON DRAINAGE EASEMENTS
- ALL LOTS CONTAIN A MINIMUM OF 5.00 ACRES
- ALL NON CUL DE SAC LOTS CONTAIN A MINIMUM ROAD FRONTAGE OF 300 FEET OR HAVE A 300 FOOT MINIMUM WIDTH AT CONNECTING MIDDPOINTS OF LONGEST LOT LINES
- FOR EXAMPLE OF UTILITY & DRAINAGE EASEMENTS - SEE DETAIL OF TYPICAL EASEMENTS



63



"T" TABLES

1	N 02° 18' 43" W	239.55'
2	N 00° 30' 38" W	71.15'
3	N 02° 18' 43" W	69.23'
4	N 87° 41' 17" E	120.00'
5	N 02° 18' 43" W	20.08'
6	N 12° 24' 35" E	85.00'

CURVE "C" TABLES

CH BEING	CHORD	RADIUS	DELTA	ARC	TAN	
1	N 05° 10' 38" E	341.02'	1308.18'	14° 58' 43"	341.99'	171.98'
2	N 02° 48' 10" W	104.08'	415.59'	14° 58' 35"	108.38'	54.50'
3	N 10° 45' 36" E	87.72'	415.59'	12° 06' 56"	87.88'	44.10'
4	N 00° 52' 17" E	427.52'	1390.93'	17° 40' 51"	429.23'	216.33'
5	N 11° 03' 39" E	65.49'	1390.93'	02° 41' 52"	65.49'	32.75'
6	N 29° 50' 35" E	243.26'	376.55'	37° 41' 23"	247.70'	128.52'
7	N 30° 11' 13" E	167.95'	179.61'	55° 45' 00"	174.77'	95.00'
8	N 37° 04' 50" E	128.63'	179.61'	41° 57' 46"	131.55'	68.88'
9	N 09° 12' 20" E	43.12'	179.61'	13° 47' 14"	43.22'	21.72'
10	N 40° 25' 21" E	121.60'	272.55'	25° 46' 45"	122.63'	62.37'
11	N 14° 55' 21" E	119.01'	272.55'	25° 13' 15"	119.97'	60.97'
12	N 43° 59' 49" E	61.59'	376.55'	09° 22' 55"	61.66'	30.90'
13	N 02° 58' 06" W	242.48'	1390.93'	10° 00' 04"	242.79'	121.70'
14	N 07° 13' 15" E	251.59'	1390.93'	10° 22' 39"	251.93'	126.31'
15	N 12° 11' 04" E	196.14'	571.98'	19° 44' 41"	197.11'	99.54'
16	N 02° 56' 58" E	239.92'	1308.18'	10° 31' 22"	240.26'	120.47'
17	N 03° 31' 50" W	61.10'	1436.52'	02° 28' 14"	61.11'	30.56'
18	N 10° 26' 19" E	101.70'	1308.18'	04° 27' 20"	101.73'	50.89'
19	N 00° 01' 59" E	93.38'	1141.02'	04° 41' 25"	93.40'	48.73'
20	N 07° 31' 20" E	204.61'	1141.02'	10° 17' 18"	204.89'	102.72'
21	S 09° 29' 33" E	369.12'	1436.52'	14° 21' 39"	360.06'	180.98'
22	S 19° 21' 54" E	134.93'	1436.52'	05° 23' 02"	134.98'	67.54'
23	N 18° 45' 36" E	159.34'	1251.54'	07° 17' 58"	159.44'	79.83'
24	N 10° 23' 57" E	162.02'	1251.54'	07° 25' 21"	162.13'	81.18'
25	N 21° 03' 25" E	331.95'	275.75'	74° 00' 36"	356.20'	207.83'
26	N 23° 11' 17" E	261.75'	304.00'	51° 00' 36"	270.00'	145.00'
27	N 21° 09' 25" E	400.81'	376.55'	64° 16' 3"	422.65'	236.71'
28	N 26° 13' 39" E	232.28'	304.00'	44° 55' 1"	238.3'	125.67'
29	N 00° 43' 39" E	32.24'	304.00'	06° 04' 46"	32.26'	16.14'
30	S 36° 04' 29" E	206.49'	275.75'	43° 58' 29"	11.84'	11.34'
31	N 05° 02' 56" E	320.69'	1251.54'	05° 11' 12"	321.57'	161.68'
32	N 07° 15' 10" W	197.22'	593.45'	19° 47' 47"	197.22'	100.00'
33	S 19° 27' 49" E	129.99'	1436.52'	05° 11' 12"	130.04'	65.06'
34	N 10° 48' 35" E	303.33'	1436.52'	12° 07' 15"	305.90'	152.52'
35	N 05° 10' 38" E	297.44'	1141.02'	4° 58' 43"	298.26'	150.00'
36	N 07° 00' 11" W	544.55'	376.55'	02° 37' 0"	608.69'	341.16'

35/44  
2/45/41  
141

0256-000

**Dailey-Fotony, inc.**  
land surveyors, planners, engineers

HOMELAND