

# A PLANNED UNIT DEVELOPMENT LUCERNE LAKES HOMES, VILLAGE I, 2<sup>nd</sup> ADDITION

BEING A REPLAT OF A PORTION OF BLOCK  
29 OF PALM BEACH FARMS COMPANY,  
PLAT NO. 3, PLAT BOOK 2, PAGES 45 THRU  
54, PUBLIC RECORDS PALM BEACH COUNTY,  
FLORIDA, LYING IN SECTION 28, TWP 44 S.,  
RGE. 42 E., PALM BEACH COUNTY, FLORIDA.

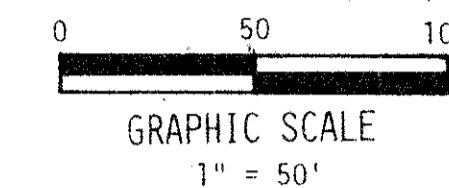
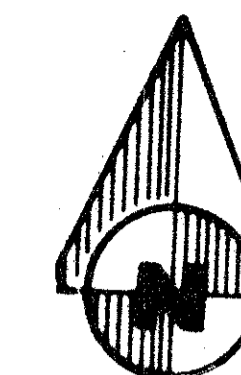
ALSO, BEING A REPLAT OF A PORTION OF PLAT NO. 2, LUCERNE LAKES  
PLAT BOOK 32, PAGES 191 & 192

# 108

STATE OF FLORIDA  
COUNTY OF PALM BEACH

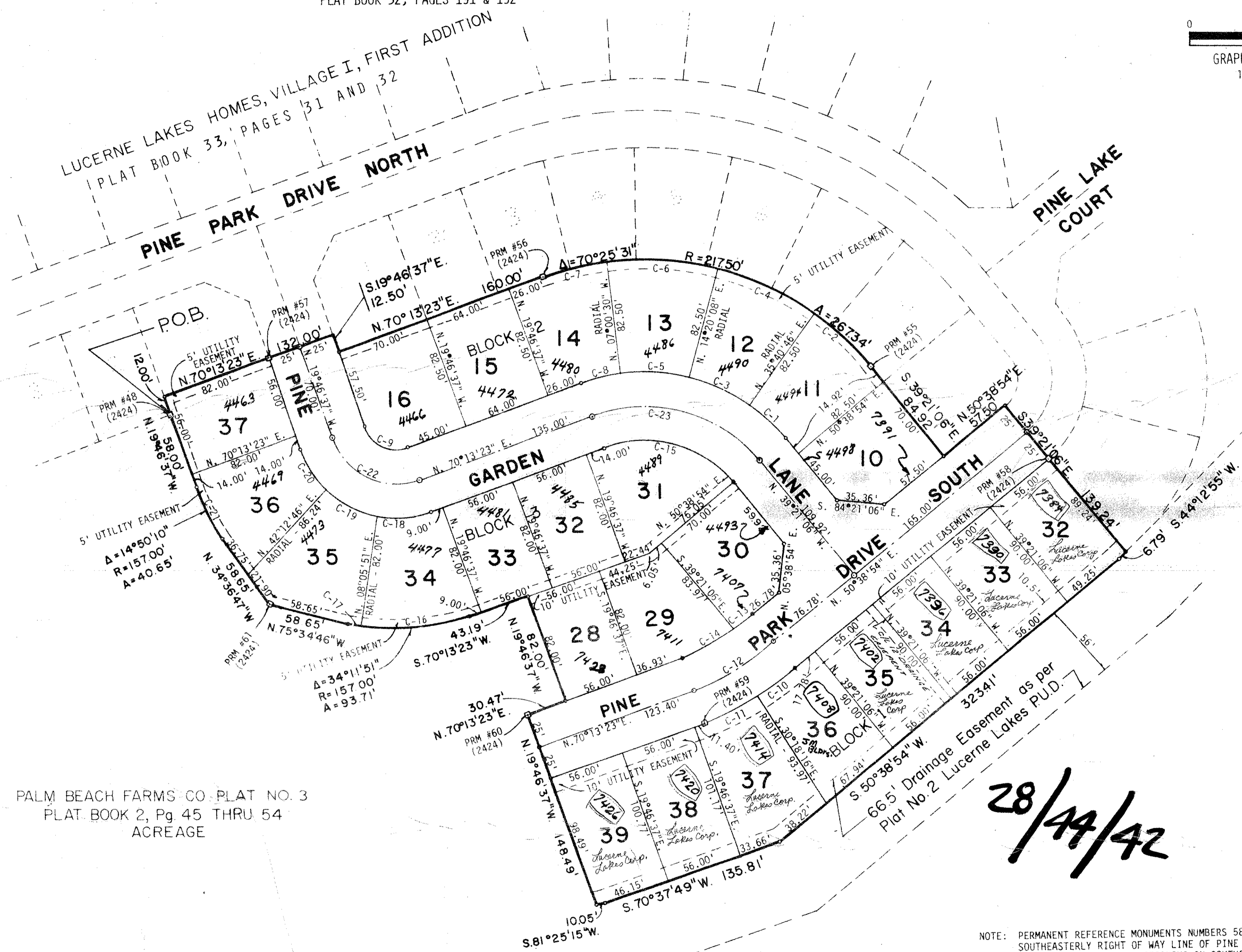
THIS PLAT WAS FILED FOR  
RECORD AT \_\_\_\_\_ M.  
THIS \_\_\_\_\_ TH DAY OF \_\_\_\_\_  
AD., 1977 AND DULY REC-  
ORDED IN PLAT BOOK \_\_\_\_\_  
ON PAGES \_\_\_\_\_ AND \_\_\_\_\_

JOHN B. DUNKLE, CLERK  
CIRCUIT COURT  
BY: \_\_\_\_\_ DC



CURVE DATA					
C. NO.	CENT. ANG.	RADIUS	ARC	CHORD	TANGENT
C-1	14°58'08"	135.00'	35.27'	35.17'	17.74'
C-2	14°58'08"	217.50'	56.82'	56.66'	28.57'
C-3	21°20'38"	135.00'	50.29'	50.00'	25.44'
C-4	21°20'38"	217.50'	81.02'	80.56'	40.99'
C-5	21°20'38"	135.00'	50.29'	50.00'	25.44'
C-6	21°20'38"	217.50'	81.02'	80.56'	40.99'
C-7	12°46'07"	217.50'	48.47'	48.37'	24.34'
C-8	12°46'07"	135.00'	30.09'	30.02'	15.11'
C-9	90°00'00"	25.00'	39.27'	35.36'	25.00'
C-10	99°02'50"	225.00'	35.53'	35.49'	17.80'
C-11	109°31'39"	225.00'	41.34'	41.28'	20.73'
C-12	19°34'39"	200.00'	68.33'	68.00'	34.50'
C-13	05°58'31"	175.00'	18.25'	18.24'	9.13'
C-14	13°35'58"	175.00'	41.54'	41.44'	20.87'
C-15	70°25'31"	85.00'	104.48'	98.02'	59.99'
C-16	27°52'28"	157.00'	76.38'	76.15'	38.42'
C-17	06°19'23"	157.00'	17.33'	17.32'	8.67'
C-18	27°52'28"	75.00'	36.49'	36.13'	18.61'
C-19	34°08'55"	75.00'	44.66'	44.00'	23.01'
C-20	28°00'37"	75.00'	36.67'	36.30'	18.71'
C-21	14°50'10"	157.00'	40.65'	40.63'	20.36'
C-22	90°00'00"	50.00'	78.54'	70.71'	50.00'
C-23	70°25'31"	110.00'	135.21'	126.86'	77.63'

LOT AREA SUMMARY	
(BLOCK ONE)	
LOT 32 -	5,037 S.F. or 0.12 AC.
LOT 33 -	5,040 S.F. or 0.12 AC.
LOT 34 -	5,040 S.F. or 0.12 AC.
LOT 35 -	5,040 S.F. or 0.12 AC.
LOT 36 -	5,503 S.F. or 0.13 AC.
LOT 37 -	6,155 S.F. or 0.14 AC.
LOT 38 -	5,654 S.F. or 0.13 AC.
LOT 39 -	5,623 S.F. or 0.13 AC.
TOTAL 43,092 S.F. or 0.99 AC.	
(BLOCK TWO)	
LOT 10 -	5,463 S.F. or 0.13 AC.
LOT 11 -	5,030 S.F. or 0.12 AC.
LOT 12 -	5,417 S.F. or 0.12 AC.
LOT 13 -	5,417 S.F. or 0.12 AC.
LOT 14 -	5,385 S.F. or 0.12 AC.
LOT 15 -	5,280 S.F. or 0.12 AC.
LOT 16 -	5,641 S.F. or 0.13 AC.
TOTAL 37,633 S.F. or 0.86 AC.	
(BLOCK THREE)	
LOT 28 -	4,592 S.F. or 0.11 AC.
LOT 29 -	5,285 S.F. or 0.13 AC.
LOT 30 -	3,626 S.F. or 0.13 AC.
LOT 31 -	5,576 S.F. or 0.13 AC.
LOT 32 -	4,592 S.F. or 0.11 AC.
LOT 33 -	4,592 S.F. or 0.11 AC.
LOT 34 -	5,366 S.F. or 0.12 AC.
LOT 35 -	6,008 S.F. or 0.14 AC.
LOT 36 -	5,349 S.F. or 0.13 AC.
LOT 37 -	4,592 S.F. or 0.11 AC.
TOTAL 52,078 S.F. or 1.20 AC.	



PALM BEACH FARMS CO. PLAT NO. 3  
PLAT BOOK 2, Pg 45 THRU 54  
ACREAGE

# 48

28/49/42

0277-310

# 33

# LUCERNE LAKES HOMES, VILLAGE I

THIS INSTRUMENT WAS PREPARED BY ROBERT J. WHIDDEN IN THE OFFICES OF BENCH MARK LAND SURVEYING AND MAPPING, INC., 1300 PALM BEACH BOULEVARD, SUITE 109, WEST PALM BEACH, FLORIDA, PHONE 689-2111.

## 2ND ADD.

RECORD PLAT			
NO.	DATE	DESCRIPTION	BY
1	6/17/77	REV BLOCKS 1 & 3	WSK
REVISIONS			
DRAWN WSK	FIELD BOOK NO. PG.	DATE 5/25/77	JOB NO. 2400
DESIGNED WVC	CHECKED RJM	SCALE 1" = 50'	DRAWING NO. 2
		SHEET 2 OF 2	

**BENCH MARK**  
Land Surveying and Mapping, Inc.  
**WANTMAN ASSOCIATES, INC.**  
CONSULTING ENGINEERS  
WEST PALM BEACH, FLORIDA