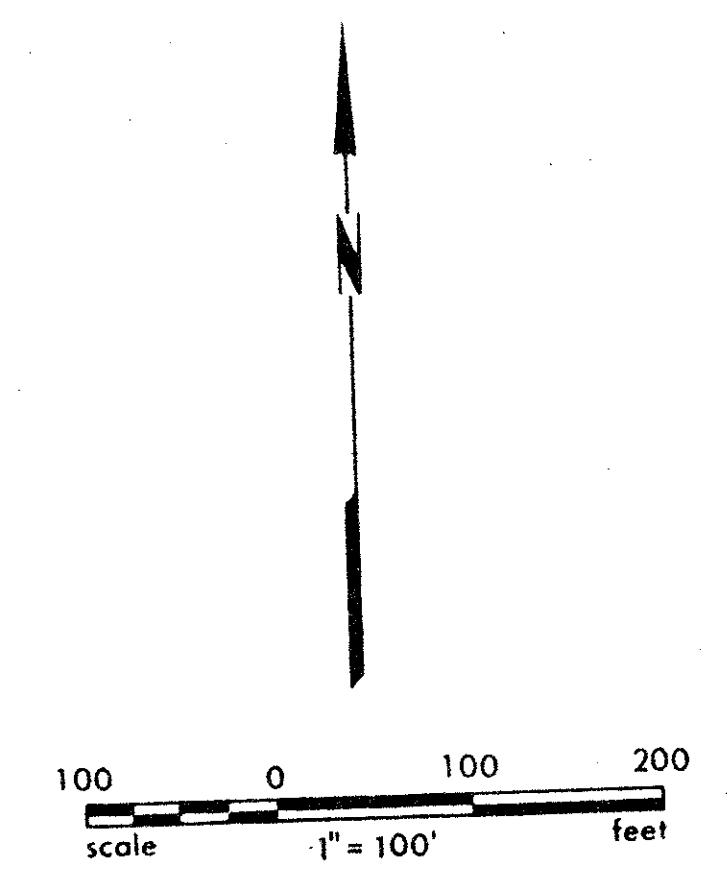
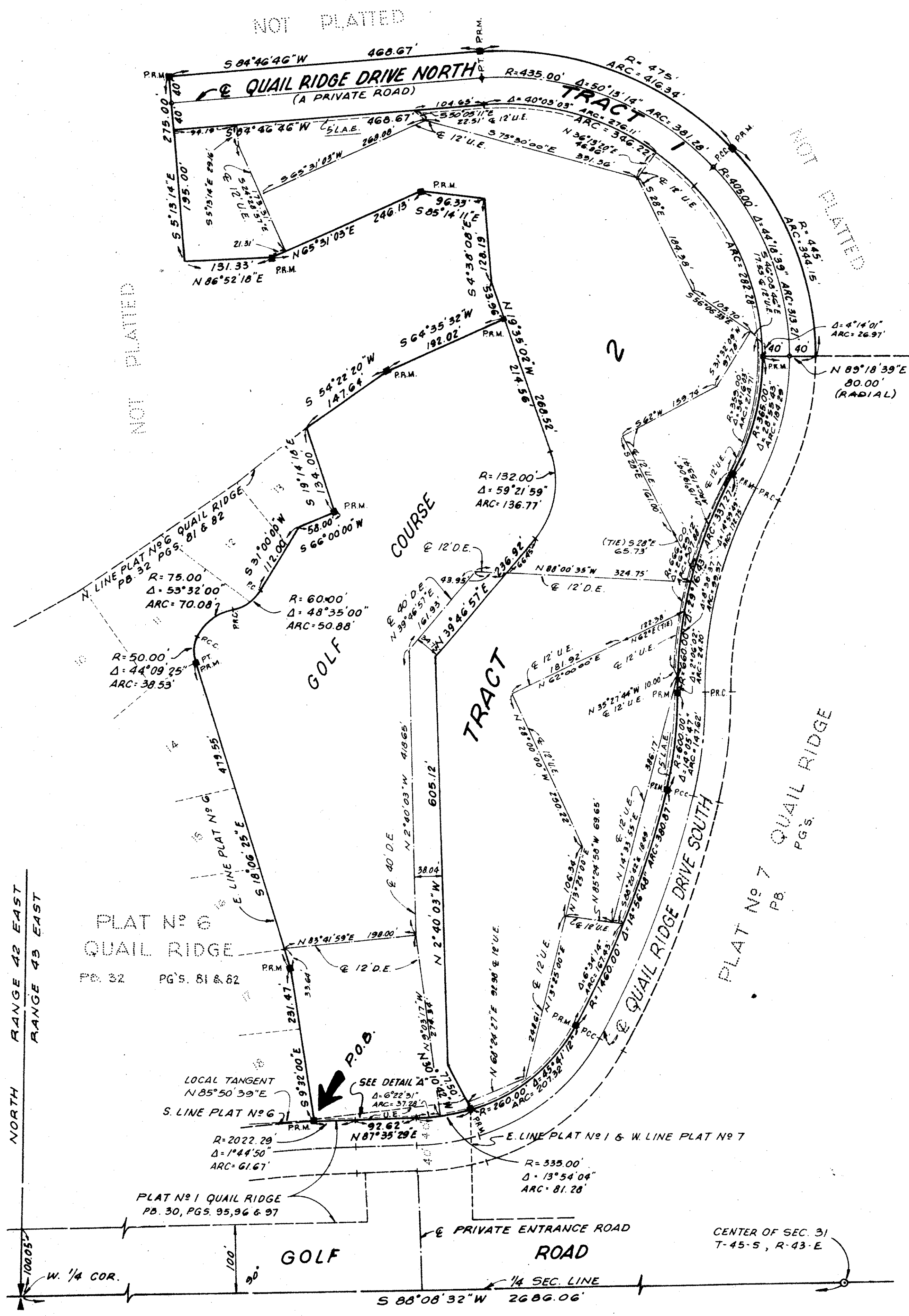


# PLAT NO. 8 QUAIL RIDGE

(A PLANNED UNIT DEVELOPMENT)

BEING A SUBDIVISION OF A PORTION OF  
THE NORTH ONE-HALF OF SECTION 31  
TOWNSHIP 45 SOUTH, RANGE 43 EAST  
PALM BEACH COUNTY, FLORIDA  
IN 2 SHEETS SHEET NO. 2

JUNE 1977



- NOTES:
- = PERMANENT REFERENCE MONUMENT (P.R.M.)
  - = PERMANENT CONTROL POINT (P.C.P.)
  - D.E. = DRAINAGE EASEMENT
  - U.E. = UTILITY EASEMENT

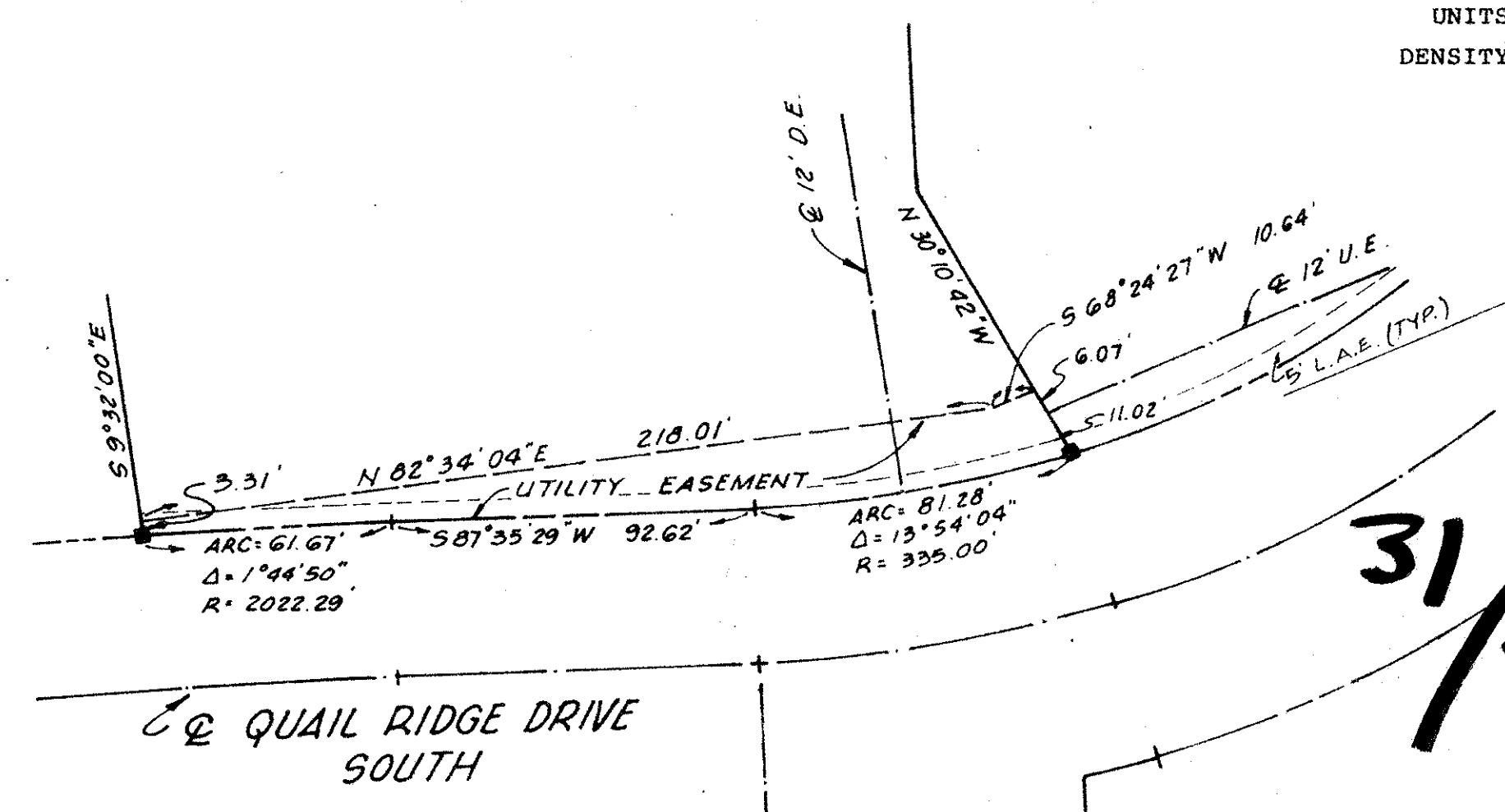
MINIMUM SETBACK REQUIREMENTS

FRONT	25 FEET
SIDE (interior)	15 FEET
SIDE (corner)	25 FEET
REAR	25 FEET

AREA TRACT 1 = 2.136 ACRES  
 AREA TRACT 2 = 11.970 ACRES  
 AREA GOLF COURSE = 7.754 ACRES  
 TOTAL AREA = 21.86 ACRES  
 TOTAL DWELLING UNITS = 84  
 DENSITY = 3.84 D.U. PER GROSS ACRE

20

NOTE:  
L.A.E. = LIMITED ACCESS EASEMENT



31/45/43

33

1000-140

61

# QUAIL RIDGE

#8  
DETAIL 1A  
1" = 40'