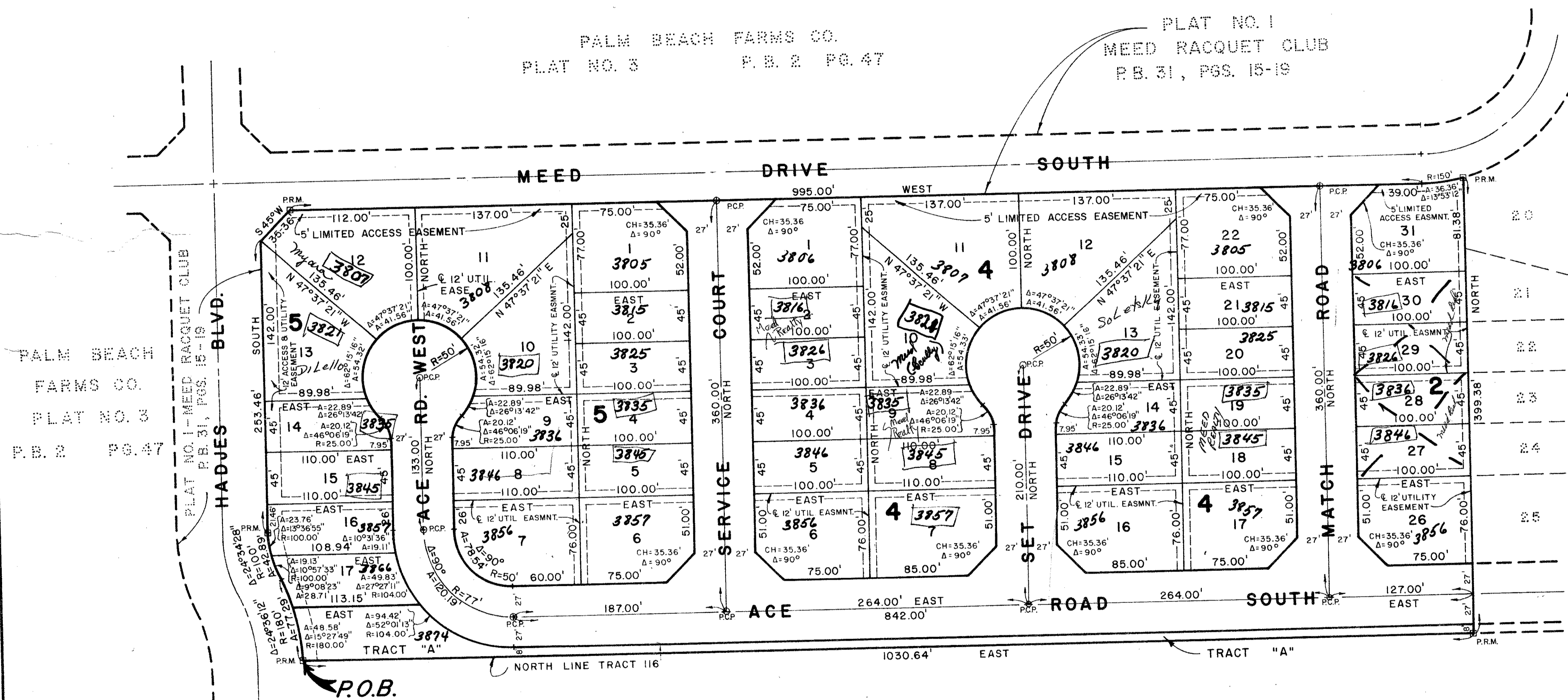
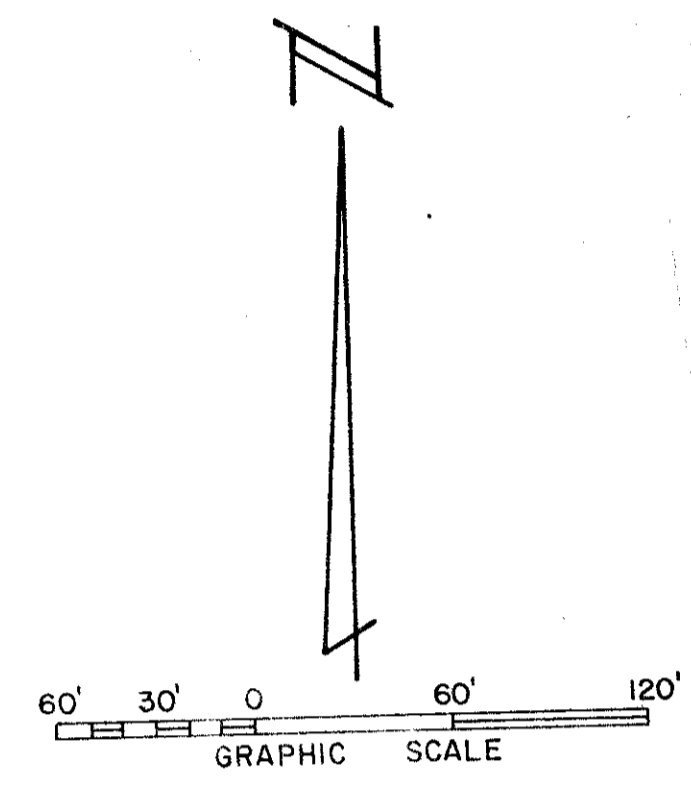


PLAT NO. III MEED RACQUET CLUB P.U.D.

IN SECTIONS 21 AND 28, TOWNSHIP 44 SOUTH, RANGE 42 EAST
PALM BEACH COUNTY, FLORIDA

BEING A REPLAT OF PORTIONS OF TRACTS 106 THRU 110, INCLUSIVE, BLOCK 23,
PALM BEACH FARMS CO. PLAT NO. 3, RECORDED IN PLAT BOOK 2, PAGE 47,
PUBLIC RECORDS OF PALM BEACH COUNTY, FLORIDA.

STATE OF FLORIDA }
COUNTY OF PALM BEACH } ss
This Plat was filed for record at _____ M.
this _____ day of _____
19 _____, and duly recorded in Plat Book No. _____
on page _____
JOHN B. DUNKLE, Clerk Circuit Court
By _____, D. C.

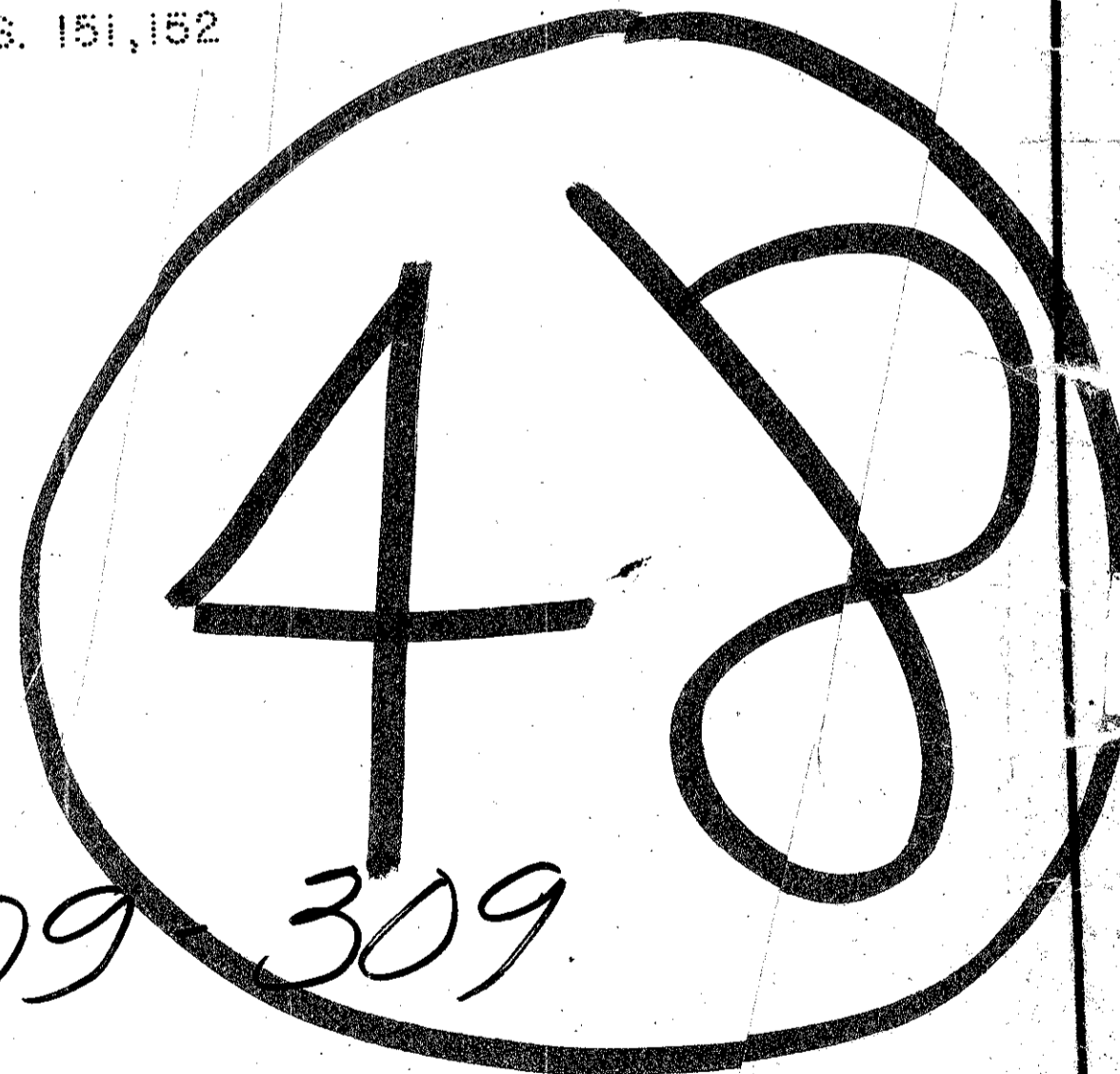


PALM BEACH FARMS CO.
PLAT NO. 3
P. B. 2 PG. 47

PALM BEACH FARMS CO.
PLAT NO. 3 P. B. 2 PG. 47

PLAT NO. I
MEED RACQUET CLUB
P. B. 31, PGS. 15-19

MEED RACQUET CLUB
PLAT NO. II
P. B. 32 PGS. 151, 152



0309 309
21328 33/48
/44/42

PLAT OF HADJES PLAZA
P. B. 32 PG. 55

TURNOUT REQUIRED

MEED RACQUET CLUB P.U.D.

THIS INSTRUMENT WAS PREPARED BY _____ OF THE OFFICE OF _____

DATE	BY	DATE
CHKD.	CHKD.	CHKD.
APP'D.	APP'D.	APP'D.
TITLE		

ROSSI AND MALAVASI ENGINEERS, INC.
REGISTERED LAND SURVEYORS
WEST PALM BEACH, FLORIDA 33401

Date	Designed	Scale
Approved	Drawn	Job No.
	Checked	File No.

PLAT NO. III
MEED RACQUET CLUB
IN 2 SHEETS SHEET NO. 2