

32/106

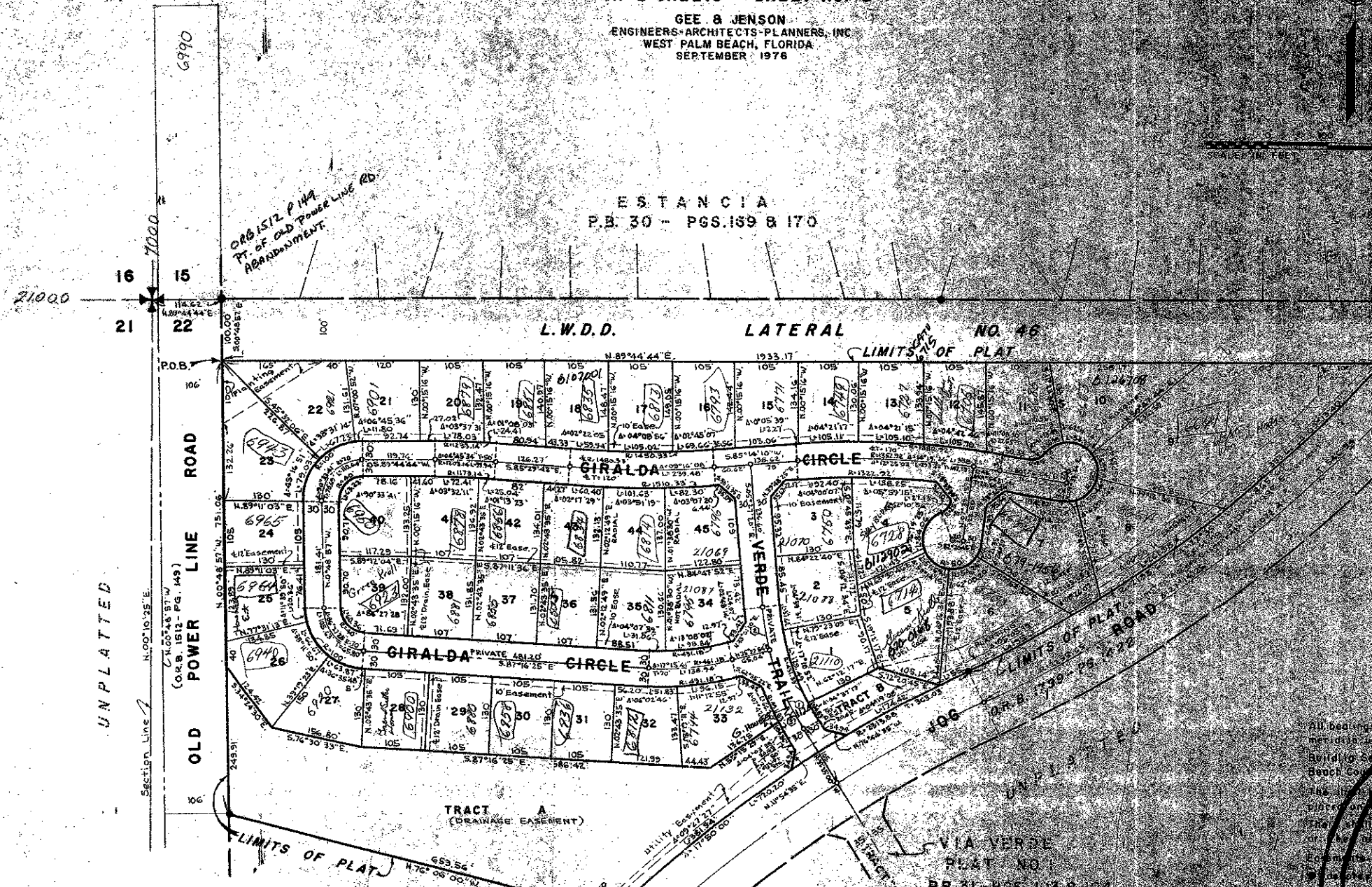
# ESTANCIA III OF VIA VERDE

106

P.U.D.

IN PART OF SECTION 22, TWP. 47 S., RGE. 42 E.  
PALM BEACH COUNTY, FLORIDA  
IN 2 SHEETS SHEET NO. 2

GEE & JENSON  
ENGINEERS-ARCHITECTS-PLANNERS, INC.  
WEST PALM BEACH, FLORIDA  
SEPTEMBER, 1976



UNPLATTED

Section Line 1  
N. 00° 48' 57" W. 751.06'  
(O.S.B. 1512 - PG. 149)

6990

21000

16  
15  
21  
22

OR 61512 P 149  
PT. OF OLD POWER LINE RD.  
ABANDONMENT

L.W.D.D. LATERAL LIMITS OF PLAT NO. 46

ESTANCIA  
P.B. 30 - PGS. 169 & 170

TRACT A  
(DRAINAGE EASEMENT)

VIA VERDE  
PLAT NO. 1  
P.B. 31 - PGS. 103 & 104

UNPLATTED

CURVE DATA

1	2	3
R=461.83	R=461.83	R=461.83
Δ=26°47'40"	Δ=08°54'46"	Δ=17°32'
L=215.98	L=71.86	L=144.1
T=110.00	T=35.99	T=72.1

## ESTANCIA III OF VIA VERDE

22/47/42

32/106

39