

6175

9

PLAT NO. 1

(A PLANNED UNIT DEVELOPMENT)

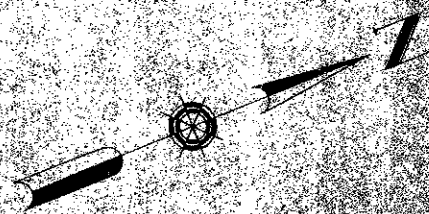
EASTPOINTE COUNTRY CLUB

IN SECTION 27, TOWNSHIP 41 SOUTH, RANGE 42 EAST

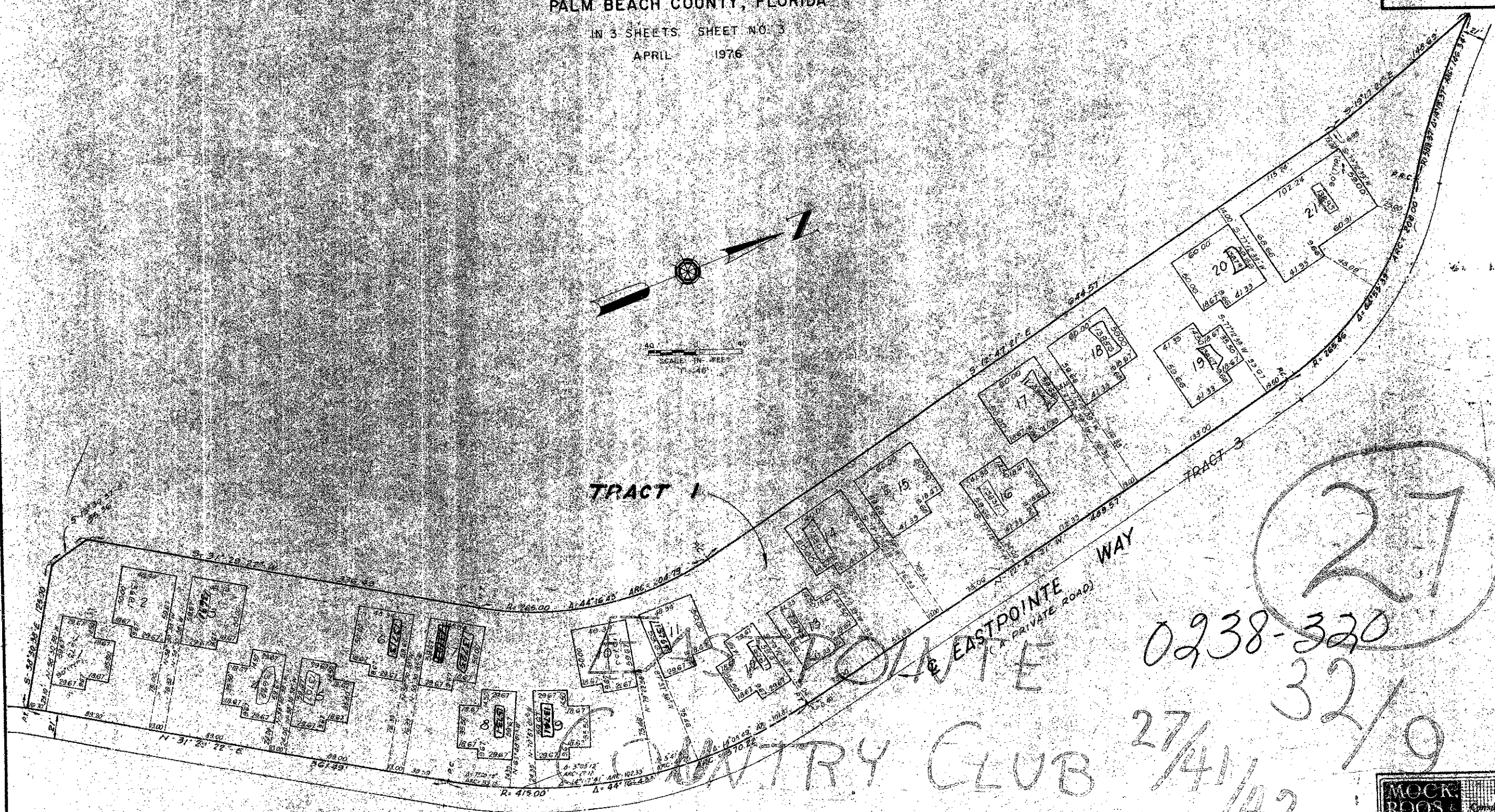
PALM BEACH COUNTY, FLORIDA

IN 3 SHEETS. SHEET NO. 3

APRIL 1976



SCALE: 1" = 40'



27

0238-320

32/9

27/41/42

EASTPOINTE COUNTRY CLUB

