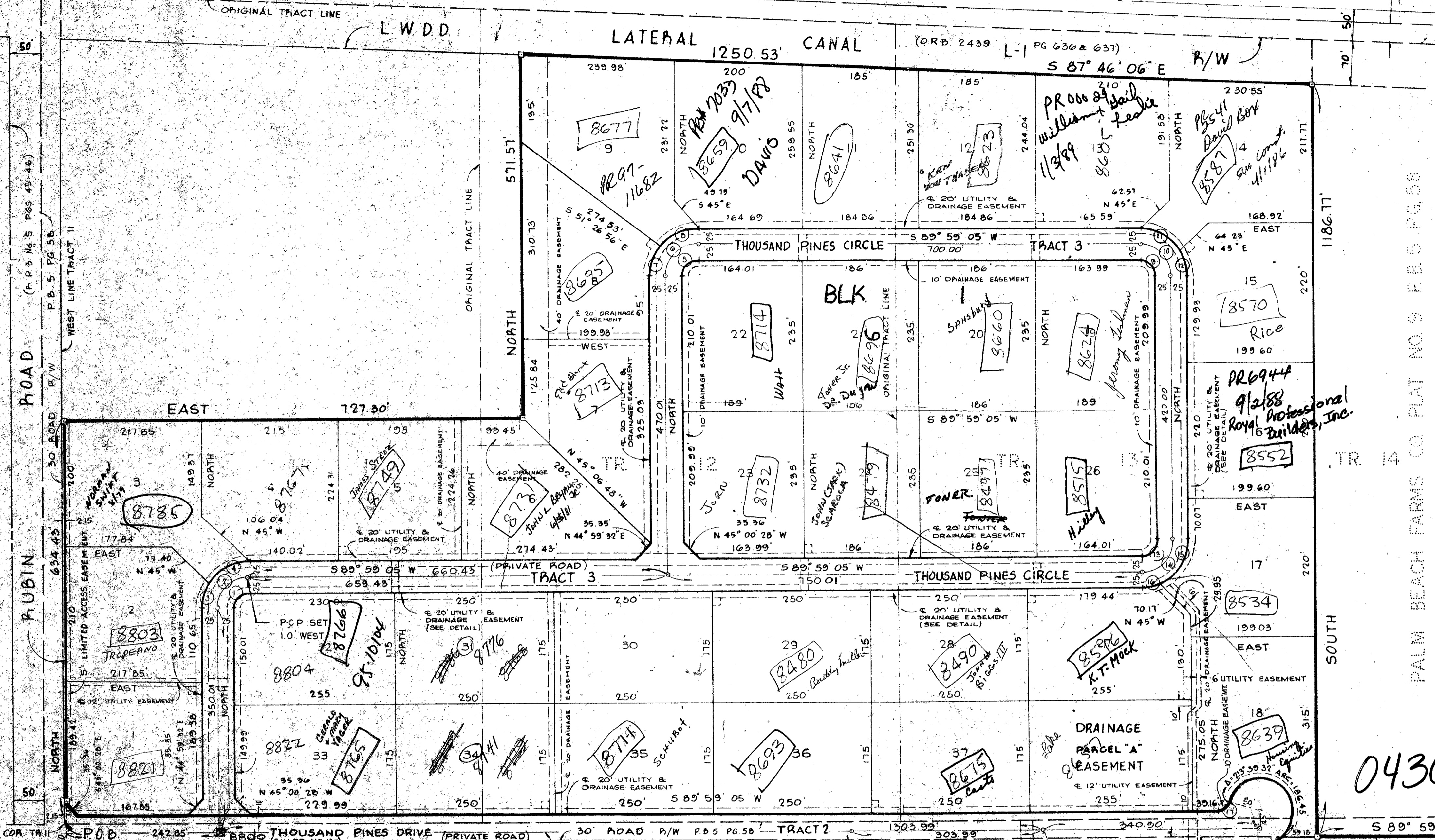
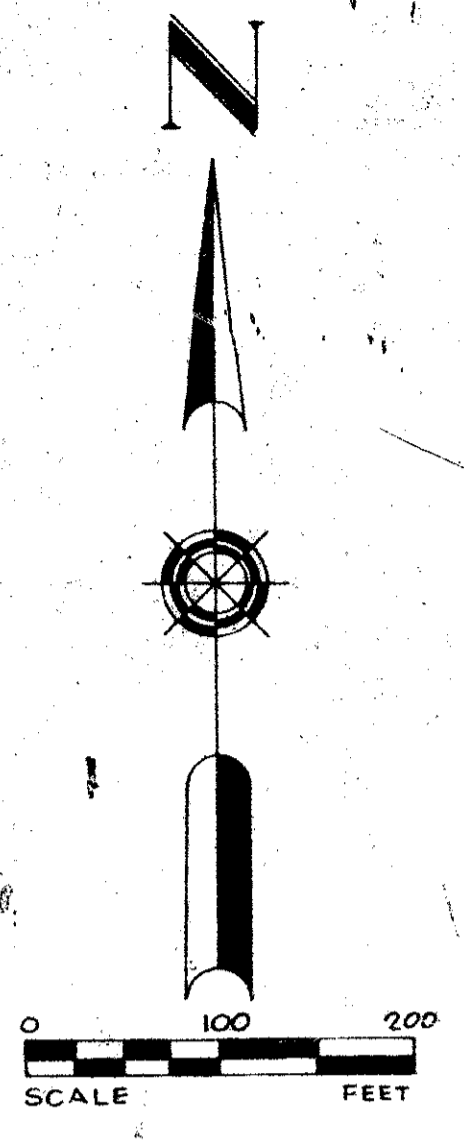


OKEECHOBEE BOULEVARD (S. R. - 704)



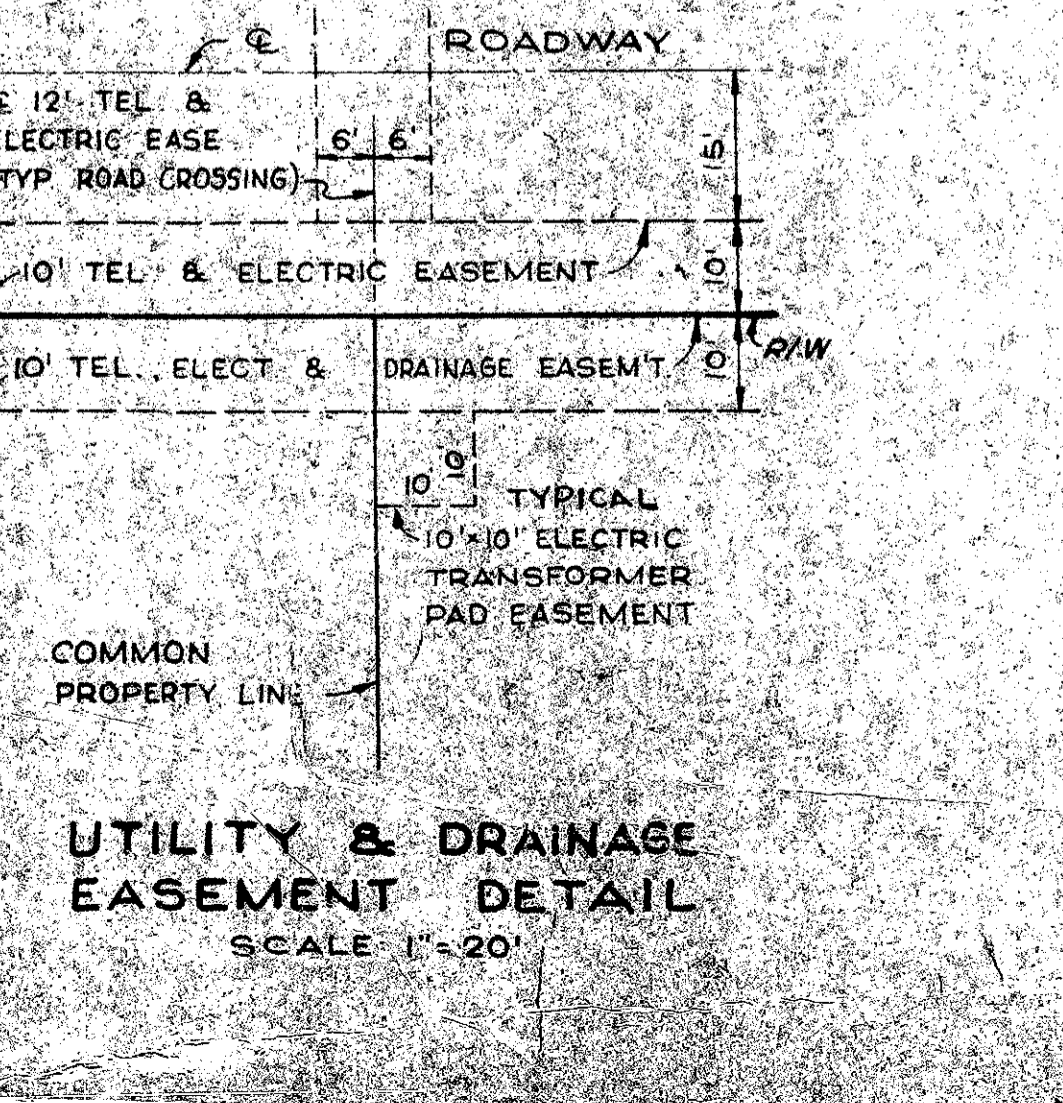
THOUSAND PINES
BEING A REPLAT OF A PORTION OF TRACTS 11, 12 AND 13, BLOCK 1, PALM BEACH FARMS CO. PLAT NO. 9 PLAT BOOK 5, PAGE 58 AND ALSO A PORTION OF TRACT 1, BLOCK 2, PALM BEACH FARMS CO. PLAT NO. 3 PLAT BOOK 2, PAGE 46 AND OTHER LANDS
SECTION 29, TWP. 43 S., RGE. 42 E.
PALM BEACH COUNTY, FLORIDA
IN 2 SHEETS SHEET No. 2 JANUARY 1976

0430-000

FS2 14
FS-B
RS Zoned
Q-4 b
w/14

CURVE DATA TABLE

NO.	RADIUS	DELTA (Δ)	ARC	TANGENT
1	25'	89°-59'-05"	39.26'	24.99'
2	50'	89°-59'-05"	78.53'	49.99'
3	75'	36°-30'-31"	47.79'	24.74'
4	75'	53°-28'-34"	70.00'	37.78'
5	25'	89°-59'-05"	39.26'	24.99'
6	50'	89°-59'-05"	78.53'	49.99'
7	75'	36°-30'-31"	47.79'	24.74'
8	75'	53°-28'-34"	70.00'	37.78'
9	25'	90°-00'-55"	39.28'	25.01'
10	50'	90°-00'-55"	78.55'	50.01'
11	75'	53°-28'-34"	70.00'	37.78'
12	75'	36°-30'-31"	47.83'	24.76'
13	25'	89°-59'-05"	39.26'	24.99'
14	50'	89°-59'-05"	78.53'	49.99'
15	75'	69°-45'-03"	91.30'	52.27'
16	75'	20°-14'-02"	26.49'	13.38'
17	25'	70°-31'-44"	30.77'	17.68'
18	25'	90°-00'-55"	39.28'	25.01'
19	50'	90°-00'-55"	78.55'	50.01'
20	75'	36°-32'-21"	47.83'	24.76'
21	75'	53°-28'-34"	70.00'	37.78'
22	25'	89°-59'-05"	39.26'	24.99'
23	50'	89°-59'-05"	78.53'	49.99'
24	75'	36°-30'-31"	47.79'	24.74'
25	75'	53°-28'-34"	70.00'	37.78'
26	25'	48°-11'-24"	21.03'	11.18'
27	50'	36°-40'-14"	32.00'	16.57'
28	50'	10°-31'-03"	88.59'	61.22'
29	50'	90°-00'-55"	78.55'	50.01'
30	50'	48°-10'-28"	42.04'	22.35'
31	25'	48°-11'-23"	21.03'	11.18'



THOUSAND PINES
29/45/49
31/234

PALM BEACH FARMS CO. PLAT NO. 3
PAGE 46