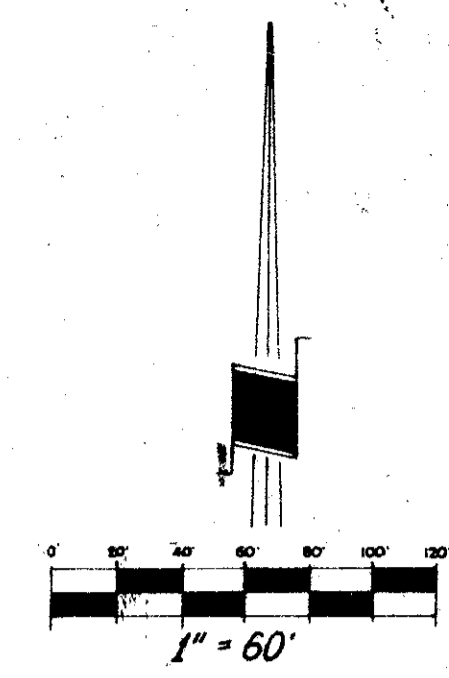


INDIAN SPRING

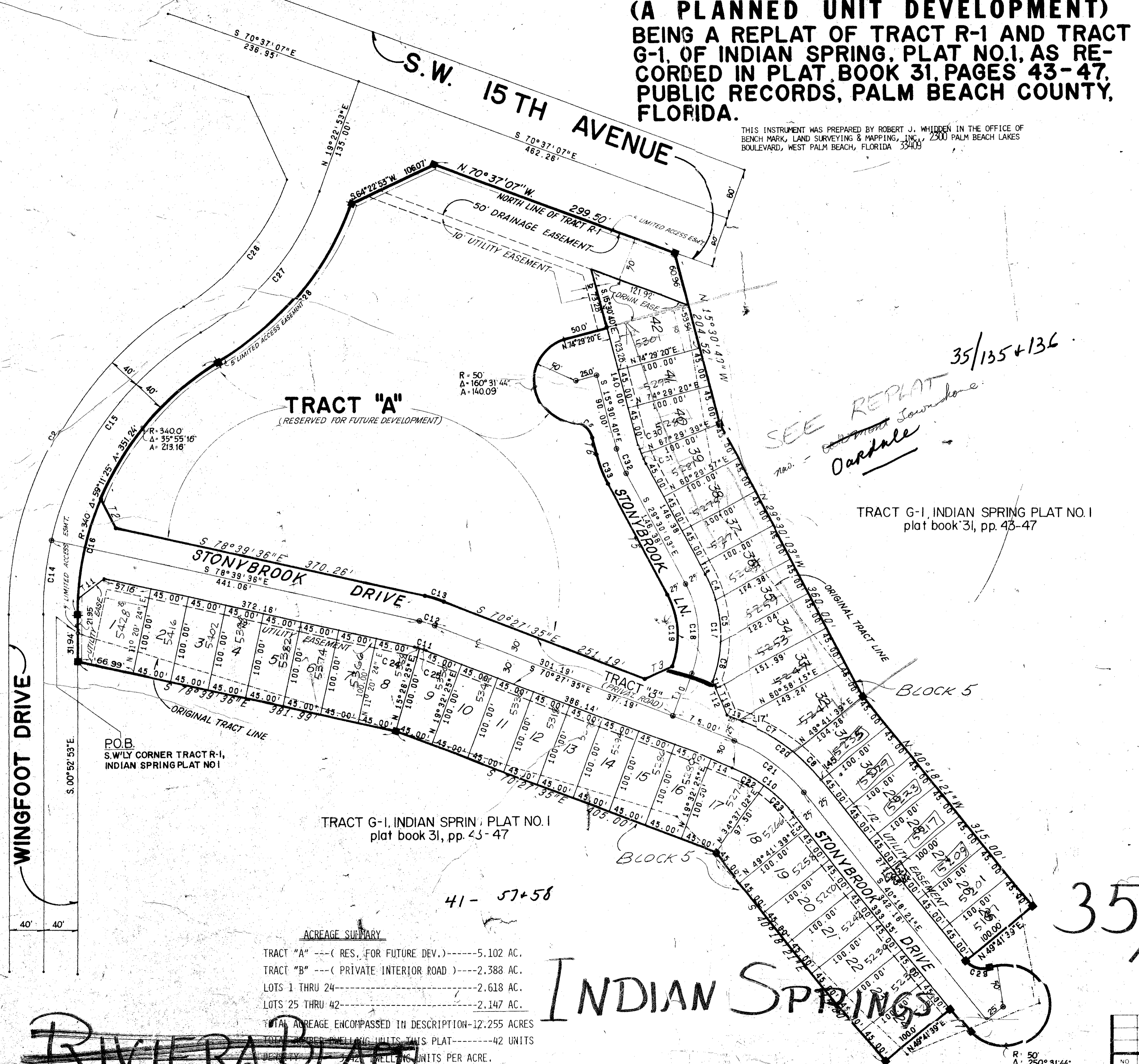
PLAT NO. 2
(A PLANNED UNIT DEVELOPMENT)
BEING A REPLAT OF TRACT R-1 AND TRACT
G-1, OF INDIAN SPRING, PLAT NO. 1, AS RE-
CORDED IN PLAT BOOK 31, PAGES 43-47,
PUBLIC RECORDS, PALM BEACH COUNTY,
FLORIDA.

THIS INSTRUMENT WAS PREPARED BY ROBERT J. WHIDDEN IN THE OFFICE OF
BENCH MARK, LAND SURVEYING & MAPPING, INC., 2200 PALM BEACH LAKES
BOULEVARD, WEST PALM BEACH, FLORIDA 33409



STATE OF FLORIDA
COUNTY OF PALM BEACH
THIS PLAT WAS FILED FOR
RECORD AT _____ M. THIS
DAY OF _____
A. D. 19____ AND DULY RECORDED
IN PLAT BOOK NO. _____ ON PAGE

JOHN B. DUNKLE, CLERK
CIRCUIT COURT.
BY: _____ D.C.

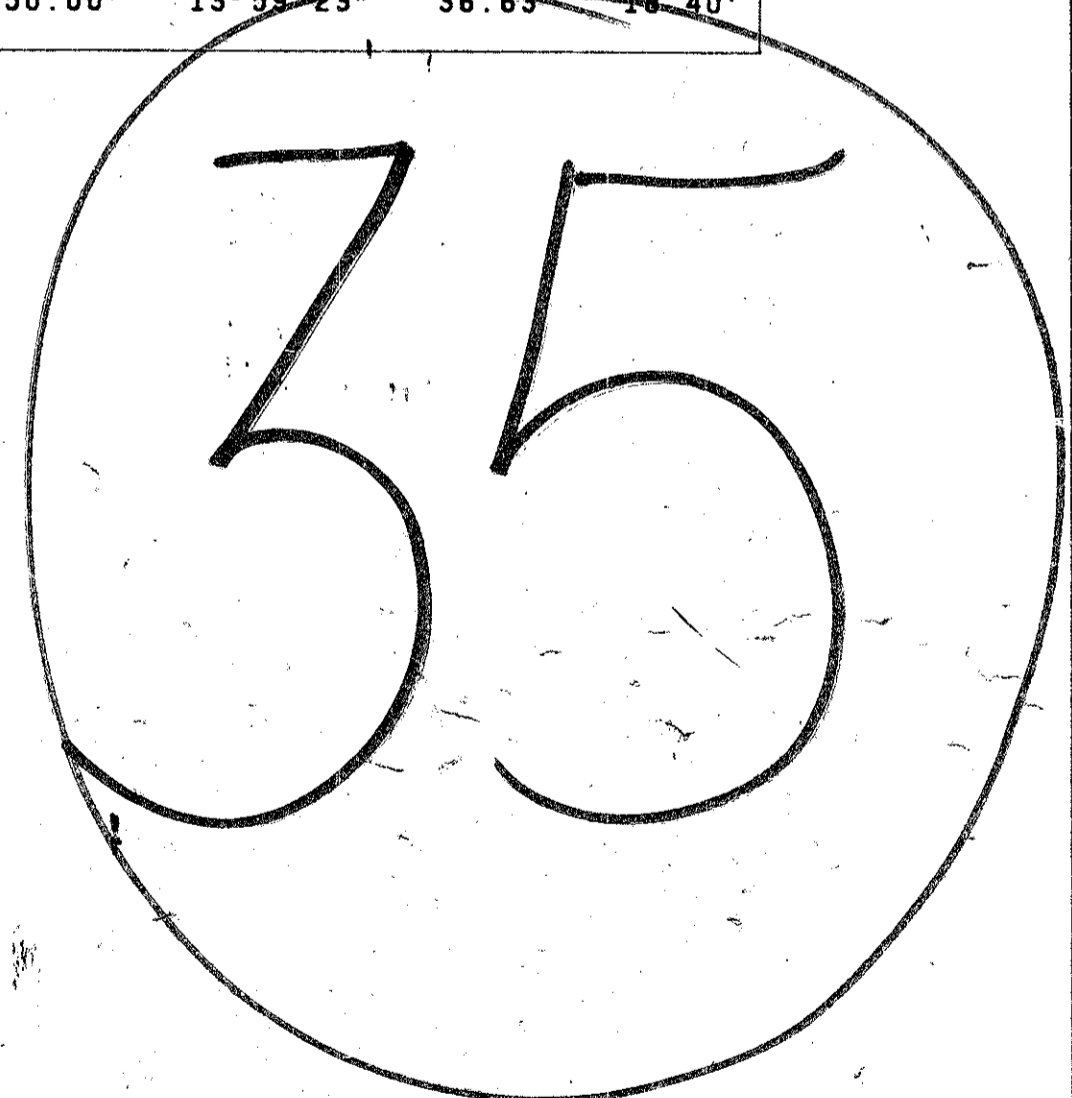


CURVE TABLE - C NOS.

(C)	CHORD BG	DIST.	RADIUS	CENTRAL ANGLE	ARC	TAN.
1	N 28°42'50"E	375.34'	380.00'	59°11'25"	392.56'	215.83'
2	N 28°42'50"E	414.85'	420.00'	59°11'25"	438.89'	238.55'
3	N 10°45'12"E	137.13'	340.00'	23°16'09"	138.08'	70.01'
4	S 21°53'28"E	33.05'	148.86'	12°44'52"	33.12'	16.63'
5	S 08°00'39"E	48.21'	148.15'	18°43'38"	48.42'	24.43'
6	S 10°32'24"W	45.45'	148.69'	17°35'03"	45.63'	23.00'
7	S 60°57'48"E	74.24'	225.00'	18°59'35"	74.59'	37.64'
8	S 45°53'10"E	43.76'	225.00'	11°09'39"	43.83'	21.98'
9	S 50°46'31"E	28.87'	25.00'	70°31'44"	30.77'	17.68'
10	S 55°22'58"E	88.44'	170.00'	30°09'14"	89.47'	45.80'
11	S 74°33'35"E	14.30'	100.00'	08°12'01"	14.31'	7.17'
12	S 74°33'35"E	18.59'	130.00'	08°12'01"	18.61'	9.32'
13	S 74°33'35"E	22.88'	160.00'	08°12'01"	22.90'	11.47'
14	N 05°38'02"E	86.23'	380.00'	13°01'48"	86.42'	43.40'
15	N 35°13'44"E	297.93'	380.00'	46°09'37"	306.15'	161.93'
16	N 12°19'51"E	118.75'	340.00'	20°06'51"	119.36'	60.30'
17	S 04°58'49"E	123.56'	148.86'	49°02'28"	127.41'	67.90'
18	S 04°58'49"E	102.81'	123.86'	49°02'28"	106.01'	56.50'
19	S 04°58'49"E	82.06'	98.86'	49°02'28"	84.62'	45.10'
20	S 55°22'58"E	117.05'	225.00'	30°09'14"	118.41'	60.61'
21	S 55°22'58"E	104.05'	200.00'	30°09'14"	105.26'	53.88'
22	S 69°55'17"E	44.61'	170.00'	15°04'37"	44.73'	22.50'
23	S 47°50'40"E	44.61'	170.00'	15°04'37"	44.73'	22.50'
24	S 76°38'36"E	7.15'	100.00'	04°06'00"	7.16'	3.58'
25	S 72°30'35"E	7.15'	100.00'	04°06'00"	7.16'	3.58'
26	N 38°50'43"E	193.26'	290.00'	38°55'40"	197.03'	102.49'
27	N 38°50'43"E	219.92'	330.00'	38°55'40"	224.21'	116.63'
28	N 38°50'43"E	246.58'	370.00'	38°55'40"	251.38'	130.76'
29	S 75°34'13"E	28.87'	25.00'	70°31'44"	30.77'	17.68'
30	S 19°00'30"E	12.20'	100.00'	06°59'42"	12.21'	6.11'
31	S 26°00'12"E	12.20'	100.00'	06°59'42"	12.21'	6.11'
32	S 22°30'21"E	30.45'	125.00'	13°59'23"	30.52'	15.34'
33	S 22°30'21"E	38.53'	150.00'	13°59'23"	38.63'	19.40'

TANGENT TABLE

(T)	BEARING	DIST.
1	N 00°52'53"W	31.94'
2	S 28°08'10"E	38.59'
3	N 64°32'25"E	35.36'
4	N 74°29'20"E	26.51'
5	S 29°30'03"E	146.38'
6	S 15°30'40"E	19.29'
7	S 49°18'21"E	37.41'
8	S 49°41'39"W	100.00'
9	S 49°41'39"E	100.00'
10	N 19°32'25"E	55.00'
11	N 51°48'25"E	38.04'
12	S 25°27'35"E	42.43'
13	S 78°39'36"E	12.18'
14	S 70°27'35"E	26.14'
15	S 40°18'21"E	26.14'
16	S 29°30'03"E	11.38'
17	S 25°27'35"E	9.98'
18	S 25°27'35"E	32.44'
19	S 70°27'35"E	16.83'
20	S 78°39'36"E	21.99'



SEE REPLAT
Oardale
35/135+136

TRACT G-1, INDIAN SPRING PLAT NO. 1
plat book 31, pp. 43-47

TRACT "A"
(RESERVED FOR FUTURE DEVELOPMENT)

TRACT G-1, INDIAN SPRING PLAT NO. 1
plat book 31, pp. 43-47

ACREAGE SUMMARY

TRACT "A" --- (RES. FOR FUTURE DEV.)-----5.102 AC.

TRACT "B" --- (PRIVATE INTERIOR ROAD)-----2.388 AC.

LOTS 1 THRU 24-----2.618 AC.

LOTS 25 THRU 42-----2.147 AC.

TOTAL ACREAGE ENCOMPASSED IN DESCRIPTION-----12.255 ACRES

TOTAL NUMBER OF SELLING UNITS THIS PLAT-----42 UNITS

DENSITY-----1.21 SELLING UNITS PER ACRE.

INDIAN SPRING

RIVIERA BEACH

0259-310
35/45/42
31/227

NOTE: FOR LOCATION OF BLOCK ONE THRU
BLOCK FOUR SEE INDIAN SPRING
PLAT NO. 1, PLAT BOOK 31 PAGES
43-47.

BENCH MARK
land surveying and mapping, inc.

WANTMAN & ASSOCIATES, INC.
CONSULTING ENGINEERS
WEST PALM BEACH - FLORIDA

INDIAN SPRING PLAT NO. 2
A PLANNED UNIT DEVELOPMENT

NO.	DATE	DESCRIPTION	BY

REVISIONS

DATE	JOB NO.	SHEET
1-7-76	1100-D	2

SCALE: 1" = 60'