

(A PLANNED UNIT DEVELOPMENT)

BANYAN LAKES

BEING A REPLAT OF TRACTS 3, 4, 13, 14, 18, 19, 20, 29, 30, 31, AND A PORTION OF TRACTS 15, 16, 17, AND 32, ALL IN BLOCK 16 OF PALM BEACH FARMS COMPANY PLAT NO. 3, PLAT BOOK 2, PAGE 47, PUBLIC RECORDS OF PALM BEACH COUNTY, FLORIDA, ALL LYING WITHIN SECTION 8, TOWNSHIP 44 SOUTH, RANGE 42 EAST, PALM BEACH COUNTY, FLORIDA.

JULY, 1975

INDEX SHEET

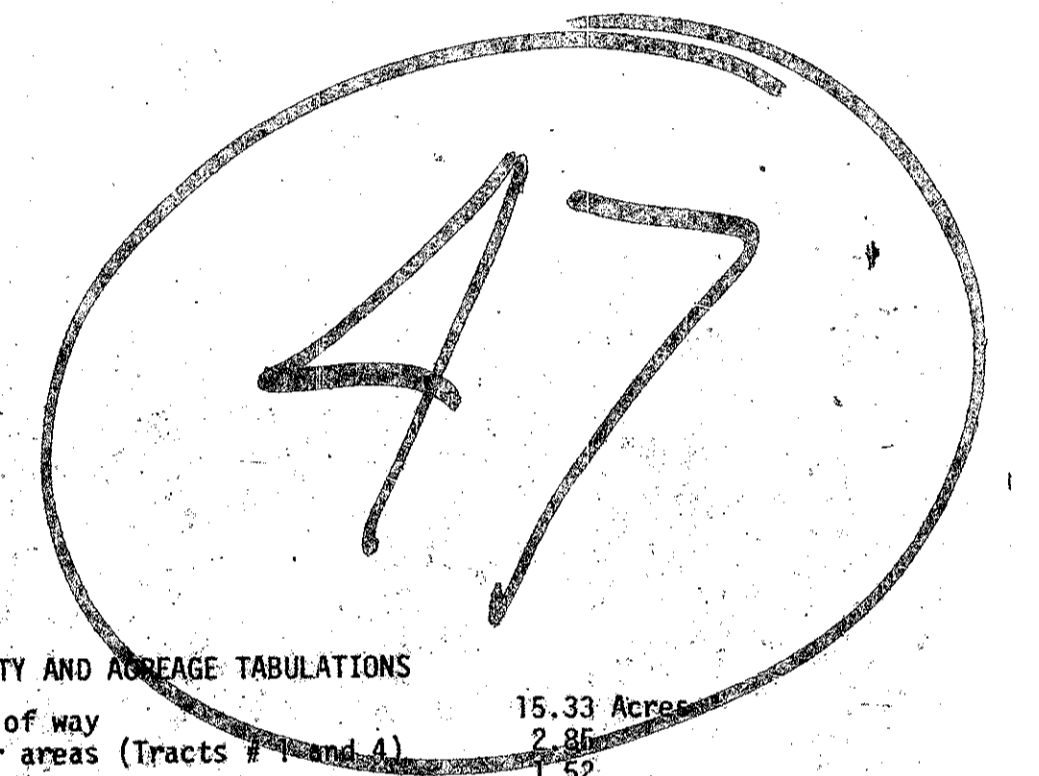
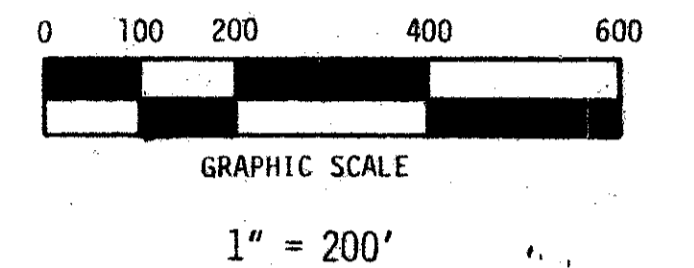
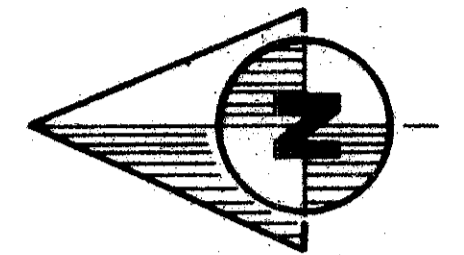
187

STATE OF FLORIDA
COUNTY OF PALM BEACH

This plat was filed for record at M. this day of 19 , and duly recorded in Plat Book No. on page .

JOHN B. DUNKLE, Clerk
Circuit Court

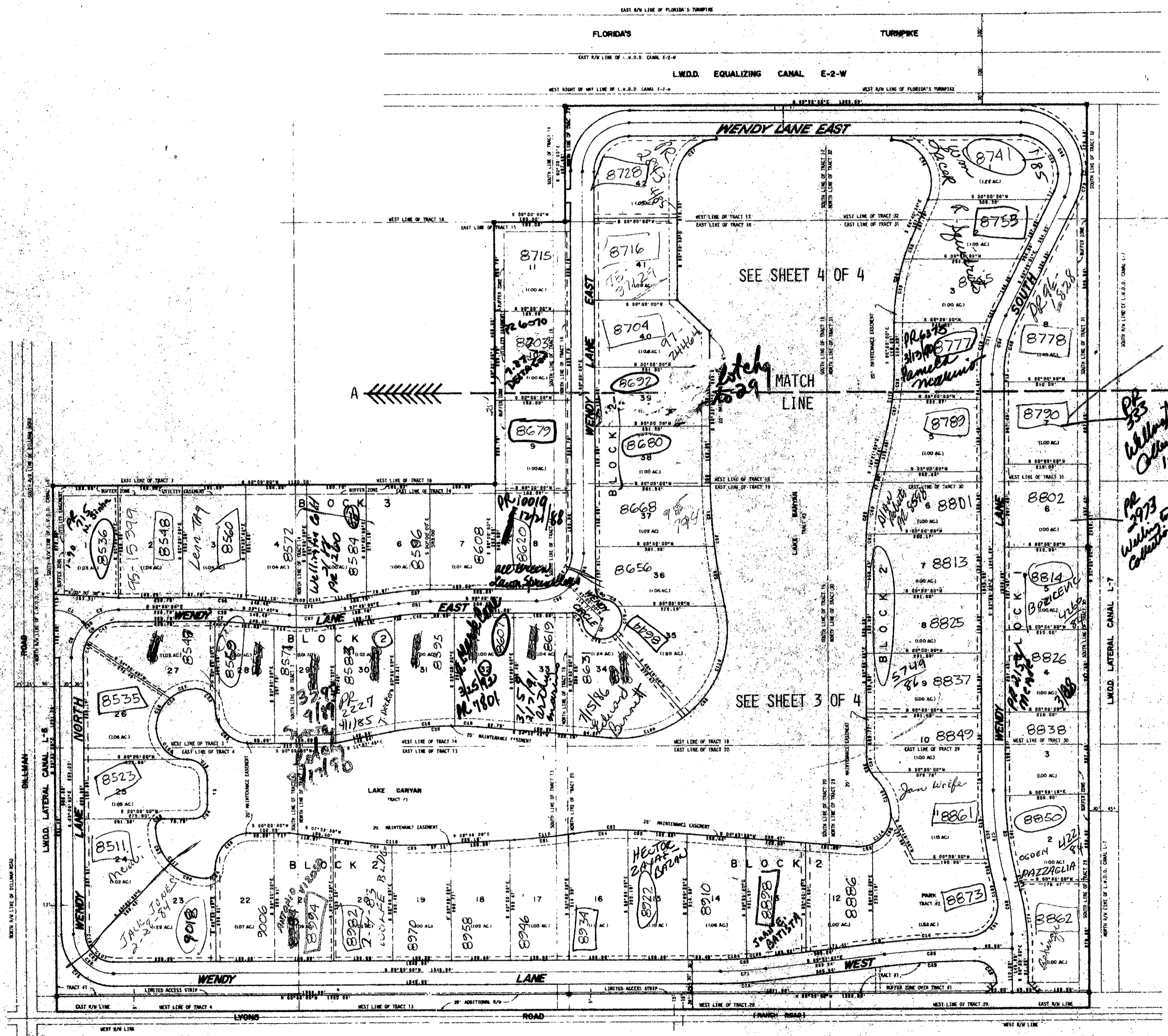
BY D.C.



DENSITY AND AVERAGE TABULATIONS

Dedicated road rights of way	15.33 Acres
Non-residential buffer areas (Tracts # 1 and 4)	2.85
Park Area (Tract # 2)	1.52
Residential (61 Lots)	63.75
Lake Banyan (Tract # 3)	27.40
Total of above = Lands encompassed within Legal Description.	110.85 Acres
Plus lands deeded to L.W.D.D.	+2.42
	113.27 Acres
Divided into a maximum of 61 dwelling units = 0.54 Units per Acre	

NOTE: THIS INDEX SHEET FOR GENERAL SCHEME OF PLAT AND LAYOUT OF SHEETS ONLY. FOR SURVEY DATA, EASEMENTS, ETC., REFER TO SHEETS 3 AND 4 OF 4.



RE/PUD
Line 3
G/4-2-2

1000-179

BANYAN LAKES

THIS INSTRUMENT WAS PREPARED BY ROBERT J. WHIDDEN OF BAILEY-FOTENNY, INC. LAND PLANNERS, SURVEYORS, AND ENGINEERS, 1028 SOUTH MILITARY TRAIL, WEST PALM BEACH, FLORIDA. PHONE 965-8787.

DWN. WALDO	DATE 2-18-75
CHK.	DWG. NO. 3600-D
REVISIONS:	SCALE 1" = 200'
	SHEET 2 OF 4

Bailey-Fotenny, inc.
Land Surveyors, Planners, Engineers

1028 So. Military Trail, West Palm Beach, Florida 33409 Phone 305/965-8787