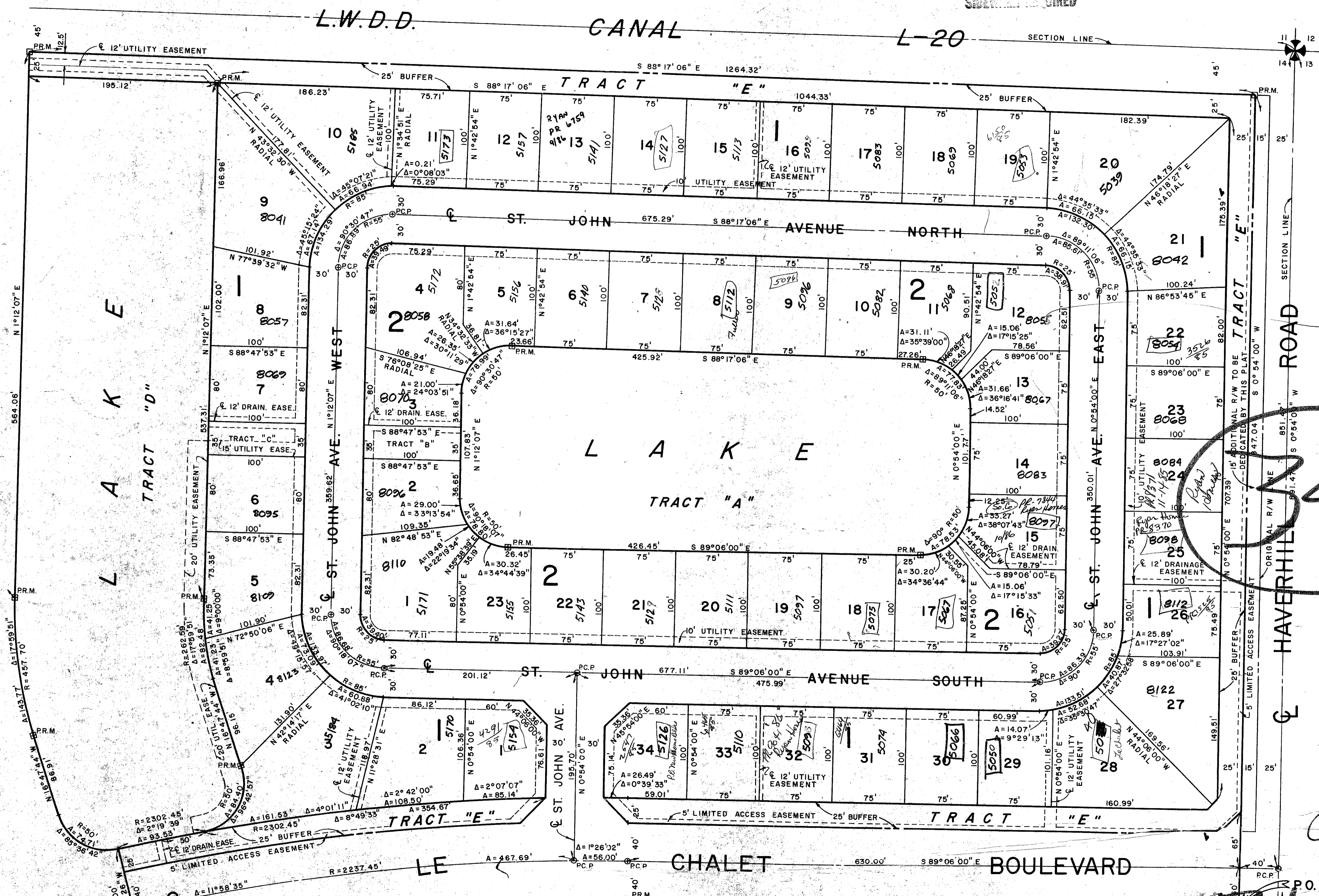


# PLAT NO. II-A-LE CHALET (P.U.D.)

IN SECTION 14, TOWNSHIP 45 SOUTH, RANGE 42 EAST  
 PALM BEACH COUNTY, FLORIDA  
 IN 2 SHEETS SHEET NO. 2

177

STATE OF FLORIDA  
 COUNTY OF PALM BEACH  
 This Plat was filed for record on \_\_\_\_\_ M.  
 this \_\_\_\_\_ day of \_\_\_\_\_  
 19 \_\_\_\_\_, and duly recorded in Plat Book No. \_\_\_\_\_  
 on page \_\_\_\_\_  
 JOHN B. DUNKLE, Clerk Circuit Court  
 By \_\_\_\_\_, D. C.



**PLAT No. 2 A LE CHALET**

THIS INSTRUMENT WAS PREPARED BY  
 R. SHEPARD, IN THE OFFICE OF

**ROSSI AND MALAVASI**  
 ENGINEERS, INC.  
 WEST PALM BEACH,  
 FLORIDA

**PLAT NO. II-A**  
**LE CHALET (P.U.D.)**  
 IN 2 SHEETS SHEET NO. 2

Date	DECEMBER 1974	Designed	R. SHEPARD	Scale	1" = 50'	Sheet	
Drawn	S. EVANS	Checked		Plot No.	4201-7	File No.	S-1085-000

0270-210

31/177