

# PINEWOOD OF WELLINGTON

P.U.D.  
IN PART OF SEC'S 33 & 34, TWP 43 S., RGE. 41 E.  
PALM BEACH COUNTY, FLORIDA  
IN 4 SHEETS SHEET NO. 4

SCALE IN FEET SCALE: 1" = 100'

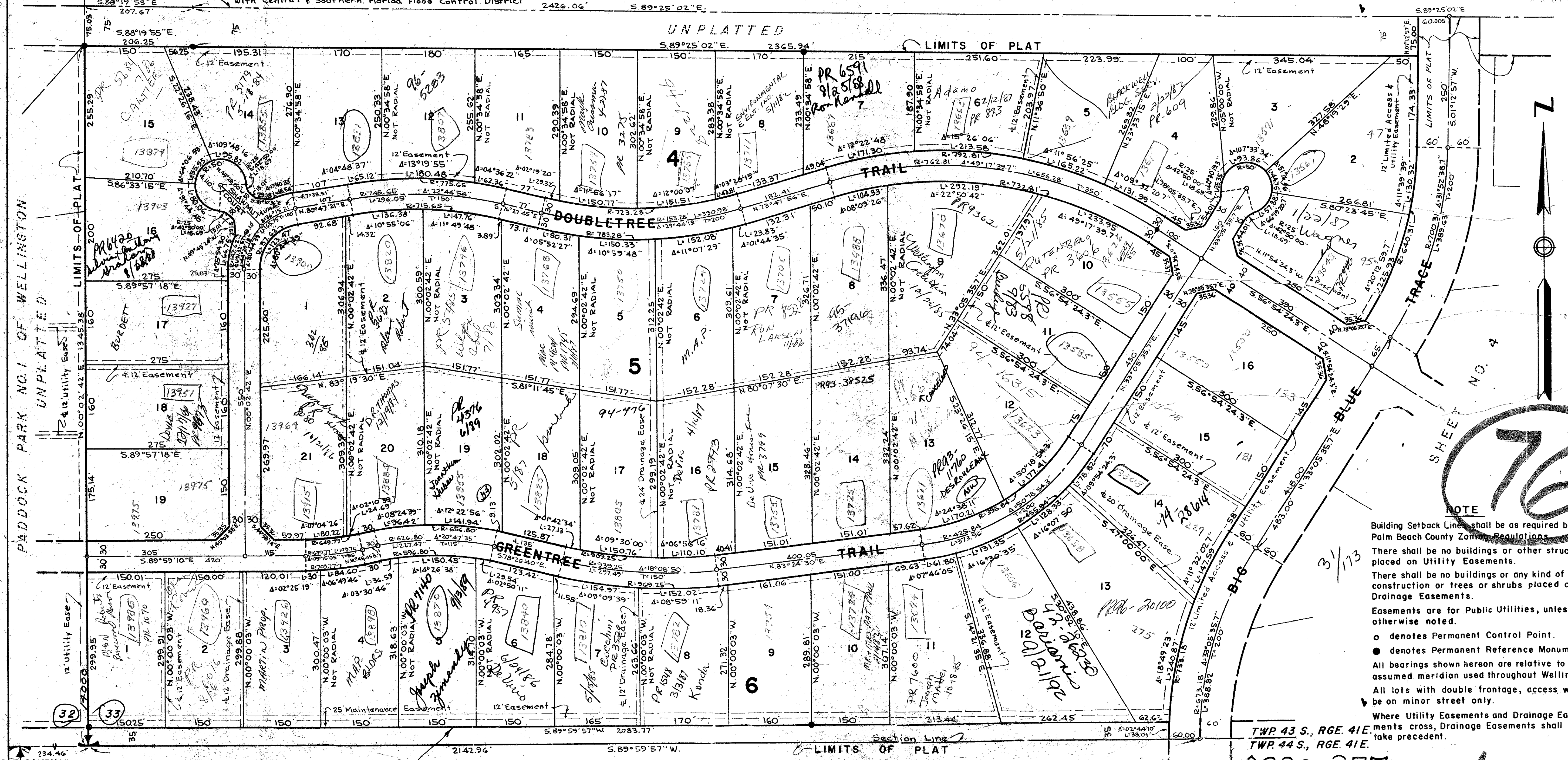
GEE & JENSON  
CONSULTING ENGINEERS, INC.  
WEST PALM BEACH, FLORIDA  
JULY 1975

STATE OF FLORIDA ss  
COUNTY OF PALM BEACH  
This Plat was filed for record at this day of 1975, and duly recorded in Plat Book No. on page JOHN B. DUNKLE, Clerk Circuit Court By: , D.C.

WEST PALM BEACH CANAL

UNPLATTED

LIMITS OF PLAT



NOTE

Building Setback Lines shall be as required by Palm Beach County Zoning Regulations.

There shall be no buildings or other structures placed on Utility Easements.

There shall be no buildings or any kind of construction or trees or shrubs placed on Drainage Easements.

Easements are for Public Utilities, unless otherwise noted.

- o denotes Permanent Control Point.
- denotes Permanent Reference Monument.

All bearings shown herein are relative to an assumed meridian used throughout Wellington.

All lots with double frontage, access will be a minor street only.

Where Utility Easements and Drainage Easements cross, Drainage Easements shall take precedent.

0332-377  
31/173

# PINEWOOD OF WELLINGTON

ACME IMPROVEMENT DISTRICT R/W  
D.B. 1037 - PGS. 686 & 687