

PLAT NO. I LE CHALET (P.U.D.)

BOUNDARY SURVEY UTILITY SITE

IN SECTION 15, TOWNSHIP 45 SOUTH, RANGE 42 EAST
PALM BEACH COUNTY, FLORIDA

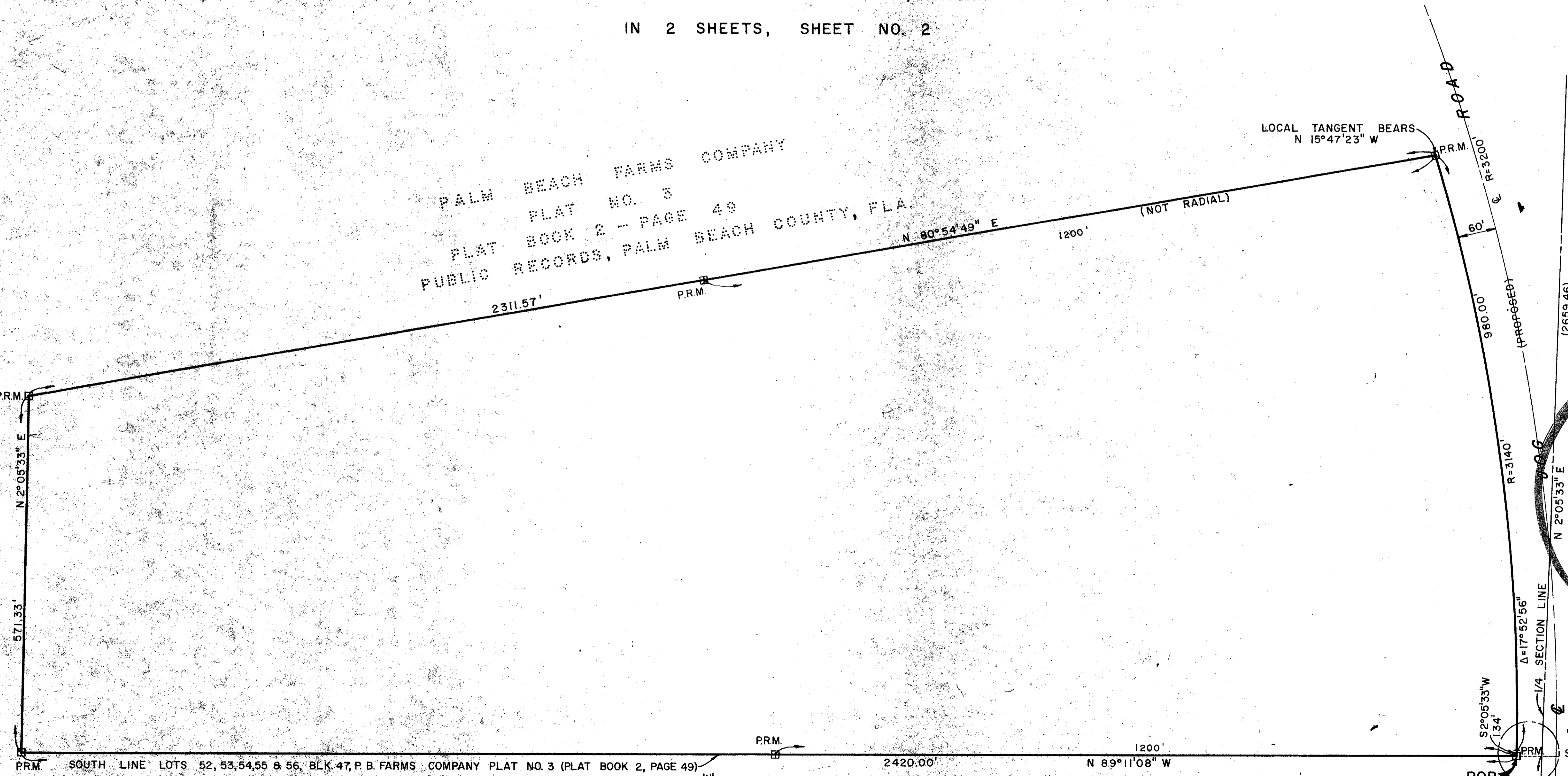
BEING A REPLAT OF A PORTION OF TRACTS 43, 44, 45, 46, 47, 48, 50, 51 AND 56, AND ALL OF TRACTS 52, 53,
54 AND 55, BLOCK 47, PALM BEACH FARMS CO. PLAT NO. 3, AS RECORDED IN PLAT BOOK 2, PG. 49,
PUBLIC RECORDS OF PALM BEACH COUNTY, FLORIDA.

IN 2 SHEETS, SHEET NO. 2

STATE OF FLORIDA } ss.
COUNTY OF PALM BEACH }
This Plat was filed for record at _____ M.
this _____ day of _____
19 _____, and duly recorded in Plat Book No. _____
on page _____
JOHN B. DUNKLE, Clerk Circuit Court
By _____, D. C.

PALM BEACH FARMS COMPANY
PLAT NO. 3
PLAT BOOK NO. 2 - PG. 49
PUBLIC RECORDS, PALM BEACH COUNTY, FLA.

PALM BEACH FARMS COMPANY
PLAT NO. 3
PLAT BOOK 2 - PAGE 49
PUBLIC RECORDS, PALM BEACH COUNTY, FLA.



34
NOT
PLATTED

LECHALET NO. 1

DETAIL
SEE PROPERTY CORNER
SCALE: 1" = 20'

GRAPHIC SCALE IN FEET
100' 50' 0' 100' 200'

1/4 CORNER
S. LINE SECTION 15
TWP. 45 S., RGE. 42 E.

THIS INSTRUMENT WAS PREPARED BY R. SHEPHARD, IN THE OFFICE OF		PLAT NO. I LE CHALET (P.U.D.) BOUNDARY SURVEY (UTILITY SITE) IN 2 SHEETS, SHEET NO. 2	
ROSSI AND MALAVASI ENGINEERS, INC. WEST PALM BEACH, FLORIDA		Date: DECEMBER, 1974 Designed: S. MALAVASI Drawn: F. McELROY Checked: _____	
State: FLORIDA		Scale: 1" = 100'	
Job No. 4201-74		Sheet: _____ of _____	
File No. S-1085-000			

0270-312
31/167