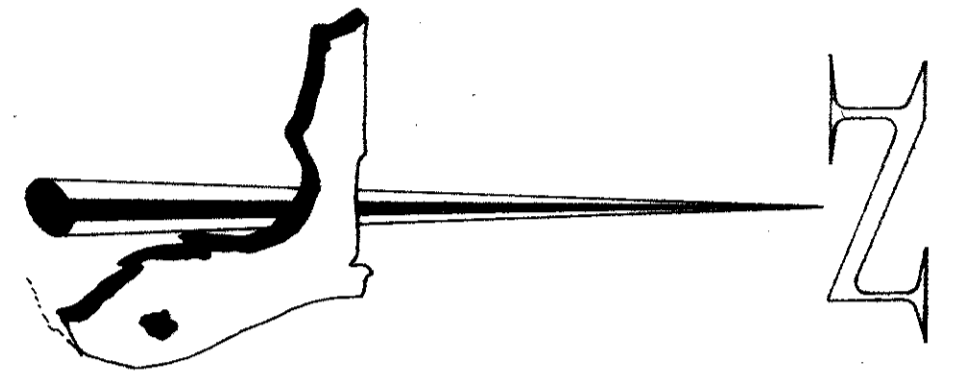
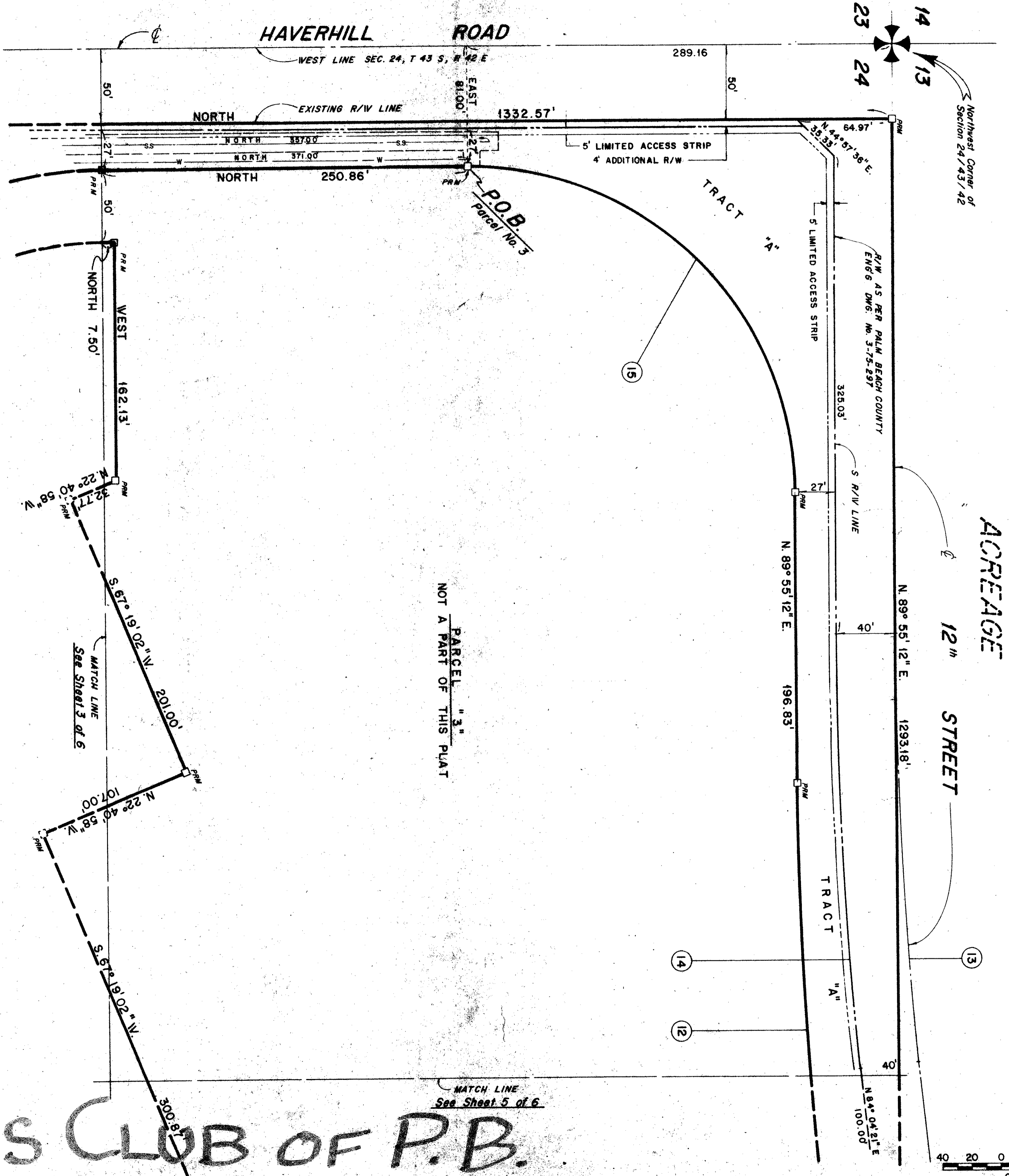


A PLANNED UNIT DEVELOPMENT THE TENNIS CLUB OF PALM BEACH, PLAT NO. 2



NOTES

1. NO BUILDING OR ANY KIND OF CONSTRUCTION OR TREES SHALL BE PLACED WITHIN EASEMENTS.
2. DRAINAGE EASEMENT TAKES PRECEDENCE OVER UTILITY EASEMENTS.
3. MAINTENANCE ACCESS RIGHTS ARE GRANTED OVER ALL TRACTS SHOWN HEREON FOR THE PURPOSE OF MAINTENANCE OF UTILITIES.

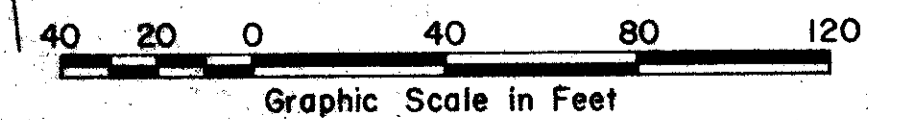
LEGEND

- D.E. INDICATES 12' DRAINAGE EASEMENT
- S.S. INDICATES 12' SANITARY SEWER EASEMENT
- W. INDICATES 12' WATER EASEMENT
- PCP INDICATES PERMANENT CONTROL POINT
- PRM INDICATES PERMANENT REFERENCE MONUMENT

31

CURVE DATA					
NO.	R	T	ARC	Δ	L. CHORD
12	2931.79'	205.47'	410.26'	8° 01' 04"	409.93'
13	2864.72'	146.31'	292.37'	5° 50' 51"	292.24'
14	2904.72'	148.35'	296.45'	5° 50' 51"	296.32'
15	222.67'	222.26'	349.30'	89° 55' 12"	314.54'

BEARING DATUM:
ALL BEARINGS SHOWN HEREON ARE RELATED TO AN ASSUMED NORTH ALONG THE WEST LINE OF THE NW 1/4 OF SEC. 24, T43 S, R 42 E



TENNIS CLUB OF P.B.

0317-302

31/142

Sheet 6 of 6

FLORIDA SURVEYING & MAPPING, INC.
REGISTERED LAND SURVEYORS
WEST PALM BEACH, FLORIDA 33401

SCALE	1" = 40'	REVISIONS	BY	DATE
DATE	May 11, 1975			
FOR	C.M.G. C.K. R.S.			
BY	R. Saladrigas			

TITLE: THE TENNIS CLUB OF PALM BEACH, PLAT NO. 2