

SOUTH SHORE NO. 2A OF WELLINGTON

P.U.D.
IN PART OF SECTION II, TWP 44 S., RGE. 41 E.
PALM BEACH COUNTY, FLORIDA
IN 4 SHEETS SHEET NO. 3

GEE & JENSON
CONSULTING ENGINEERS, INC.
WEST PALM BEACH, FLORIDA
FEBRUARY 1975

SHEET NO. 4

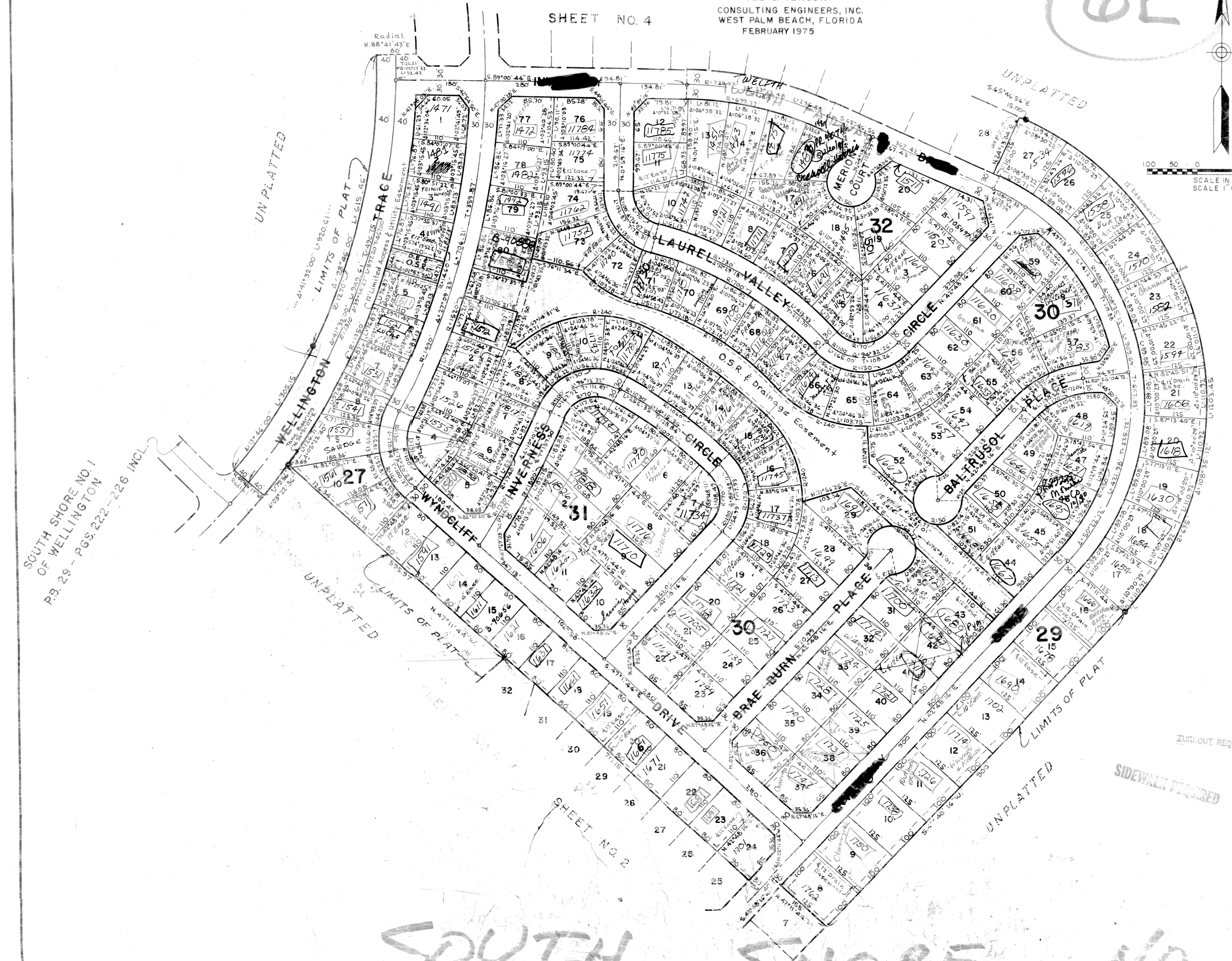
118

62



100 50 0 100 200
SCALE IN FEET
SCALE 1" = 100'

STATE OF FLORIDA
COUNTY OF PALM BEACH
This Plat was filed for record at _____ M.
this _____ day of _____, 1975,
and duly recorded in Plat Book No. _____
on page _____
JOHN B. DUNKLE, Clerk Circuit Court.
By _____, D.C.



NOTE
Building Setback Lines shall be as required by Palm Beach County Zoning Regulations.
There shall be no buildings or other structures placed on Utility Easements.
There shall be no buildings or any kind of construction or trees or shrubs placed on Drainage Easements.

NOTE
Easements are for Public Utilities, unless otherwise noted.
o denotes Permanent Control Point.
● denotes Permanent Reference Monument.
O.S.R. denotes Open Space Recreation
Limited planting and Public Utilities shall be allowed in combination O.S.R. & Drainage Easement areas.
All lots with double frontage, access will be on minor street only, except where otherwise noted.
All bearings shown herein are relative to an assumed meridian

SOUTH SHORE NO. 1
OF WELLINGTON
P.B. 29 - PGS. 222 - 226 INCL.

JURIMOUT REQUIRED

SIDEWALK REQUIRED

31 / 118

0332-376

SOUTH SHORE NO. 2A