

31/66

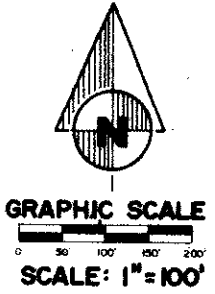
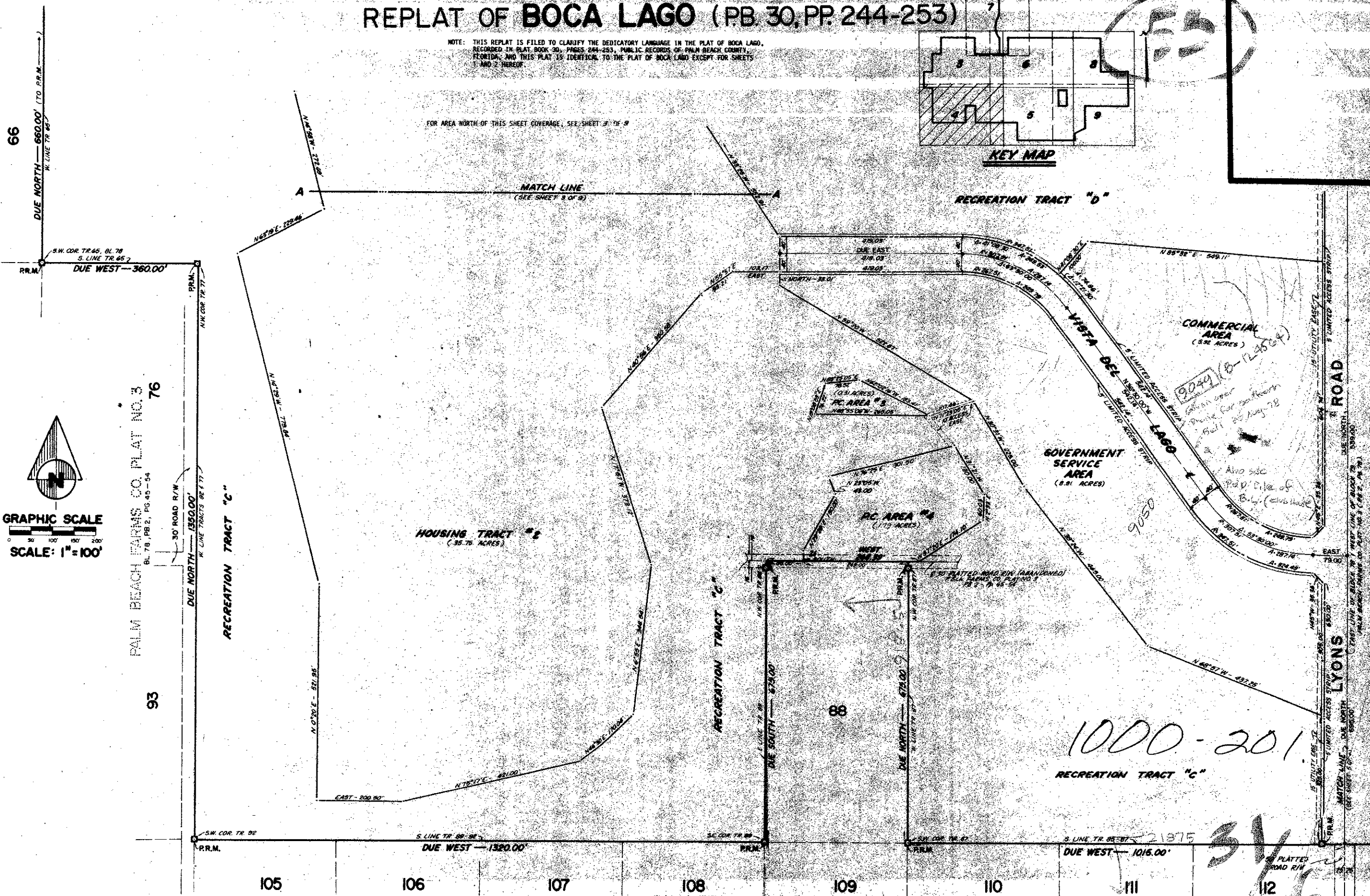
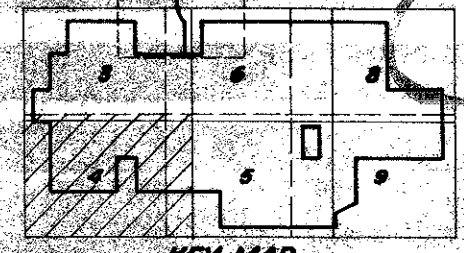
8K 31, 244-253

66

(A PLANNED UNIT DEVELOPMENT) REPLAT OF BOCA LAGO (PB 30, PP. 244-253)

NOTE: THIS REPLAT IS FILED TO CLARIFY THE DEDICATORY LANGUAGE IN THE PLAT OF BOCA LAGO, RECORDED IN PLAT BOOK 30, PAGES 244-253, PUBLIC RECORDS OF PALM BEACH COUNTY, FLORIDA, AND THIS PLAT IS IDENTICAL TO THE PLAT OF BOCA LAGO EXCEPT FOR SHEETS 1 AND 2 HEREOF.

FOR AREA NORTH OF THIS SHEET COVERAGE, SEE SHEET 7 OF 9



PALM BEACH FARMS CO. PLAT NO. 3
BL. 76, PB. 2, PG. 45-54

PALM BEACH FARMS CO. PLAT NO. 3
BL. 76, PB. 2, PG. 45-54

REPLAT OF BOCA LAGO

This instrument was prepared by Robert R. Game of Osley-Fotopay, Inc., 1028 South Military Trail, West Palm Beach, Florida, 335-6787, for the firm of CONRAD W. SCHAEFER, Consulting Engineers, West Palm Beach, Florida.

SHEET 4 OF 9
CONRAD W. SCHAEFER, CONSULTING ENGINEER
PALM BEACH COUNTY, FLORIDA

COMMERCIAL AREA (5.92 ACRES)
9049 (8-12-56)
Gov. Serv. Area
Boca LAGO
Also see Plat of Boca LAGO (plus here)

1000-201
RECREATION TRACT "C"

31/66