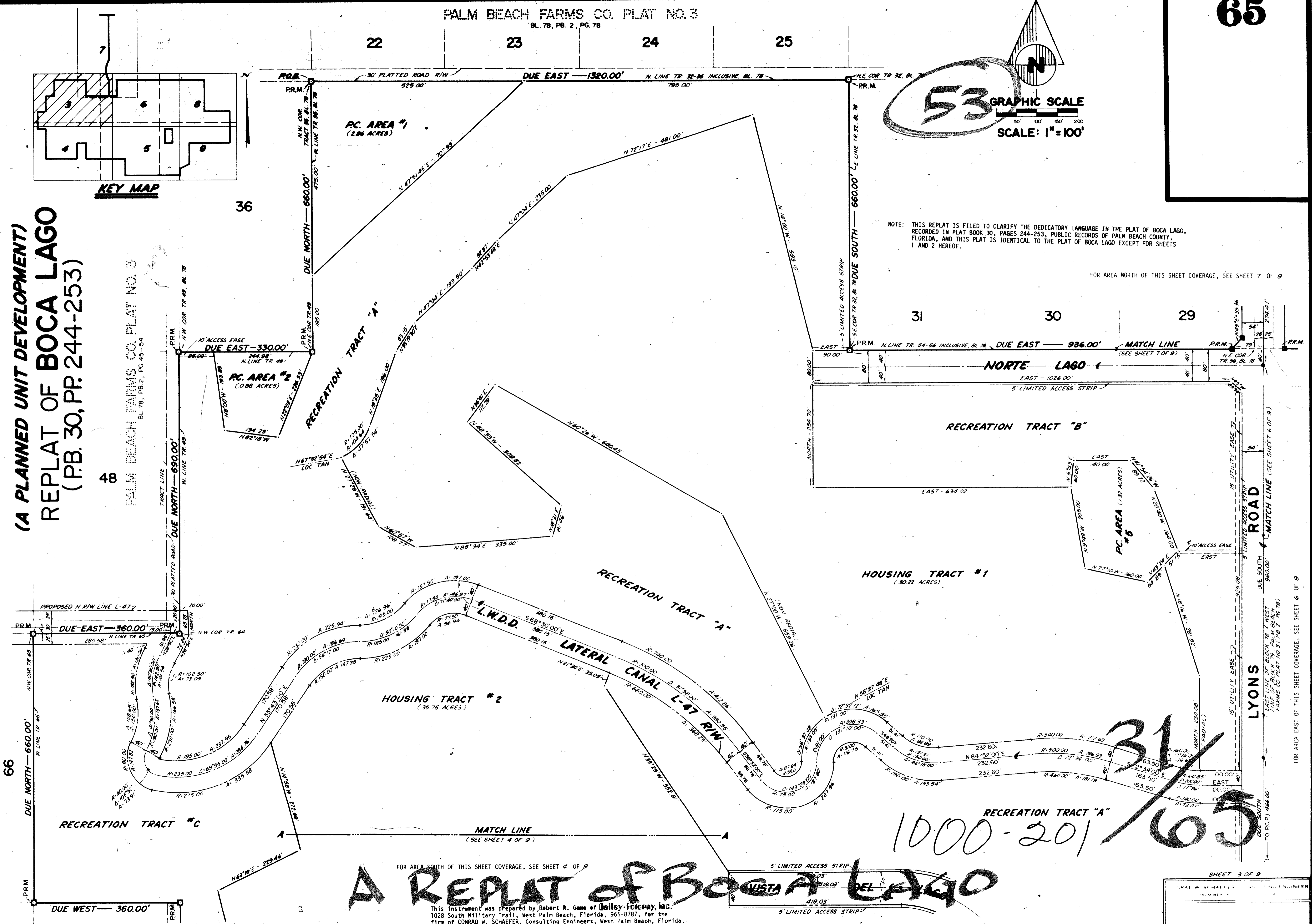


31/65

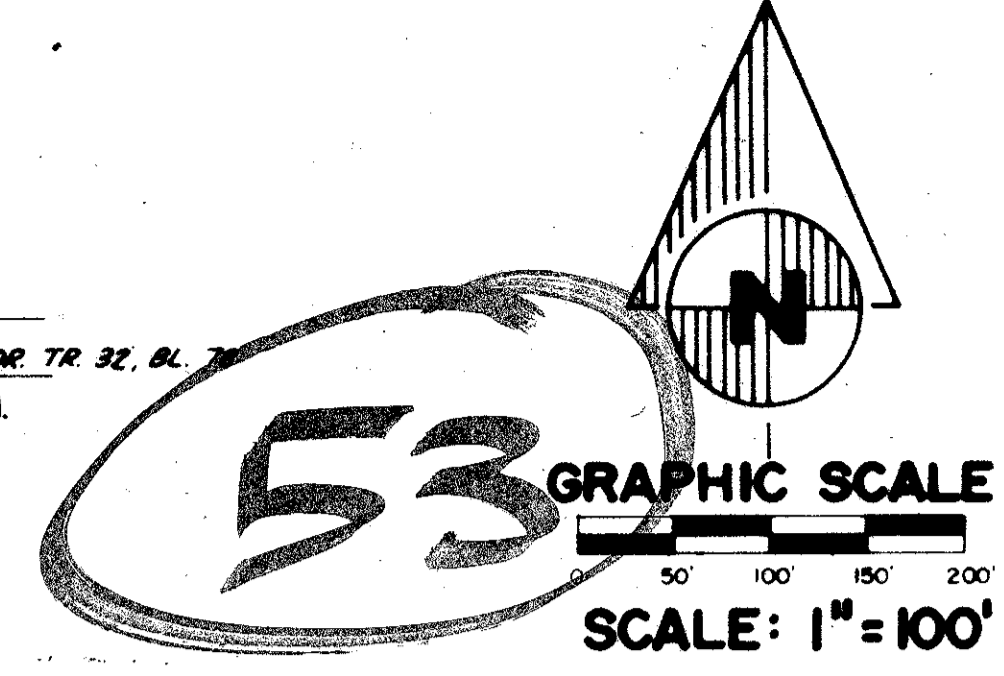
PALM BEACH FARMS CO. PLAT NO. 3  
BL. 78, PB. 2, PG. 78

(A PLANNED UNIT DEVELOPMENT)  
REPLAT OF BOCA LAGO  
(PB. 30, PR. 244-253)

PALM BEACH FARMS CO. PLAT NO. 3  
BL. 78, PB. 2, PG. 45-54



KEY MAP



NOTE: THIS REPLAT IS FILED TO CLARIFY THE DEDICATORY LANGUAGE IN THE PLAT OF BOCA LAGO, RECORDED IN PLAT BOOK 30, PAGES 244-253, PUBLIC RECORDS OF PALM BEACH COUNTY, FLORIDA, AND THIS PLAT IS IDENTICAL TO THE PLAT OF BOCA LAGO EXCEPT FOR SHEETS 1 AND 2 HEREOF.

FOR AREA NORTH OF THIS SHEET COVERAGE, SEE SHEET 7 OF 9

FOR AREA EAST OF THIS SHEET COVERAGE, SEE SHEET 6 OF 9

FOR AREA SOUTH OF THIS SHEET COVERAGE, SEE SHEET 4 OF 9

A REPLAT of Boca LAGO

This instrument was prepared by Robert R. Gann of Bailey-Photopay, Inc., 1028 South Military Trail, West Palm Beach, Florida, 335-8787, for the firm of CONRAD W. SCHAEFER, Consulting Engineers, West Palm Beach, Florida.

SHEET 3 OF 9

CONRAD W. SCHAEFER  
CONSULTING ENGINEERS  
PALM BEACH, FLORIDA

31/65  
1000-201