

31/59

# PLAT OF TRAILS-END PLAZA

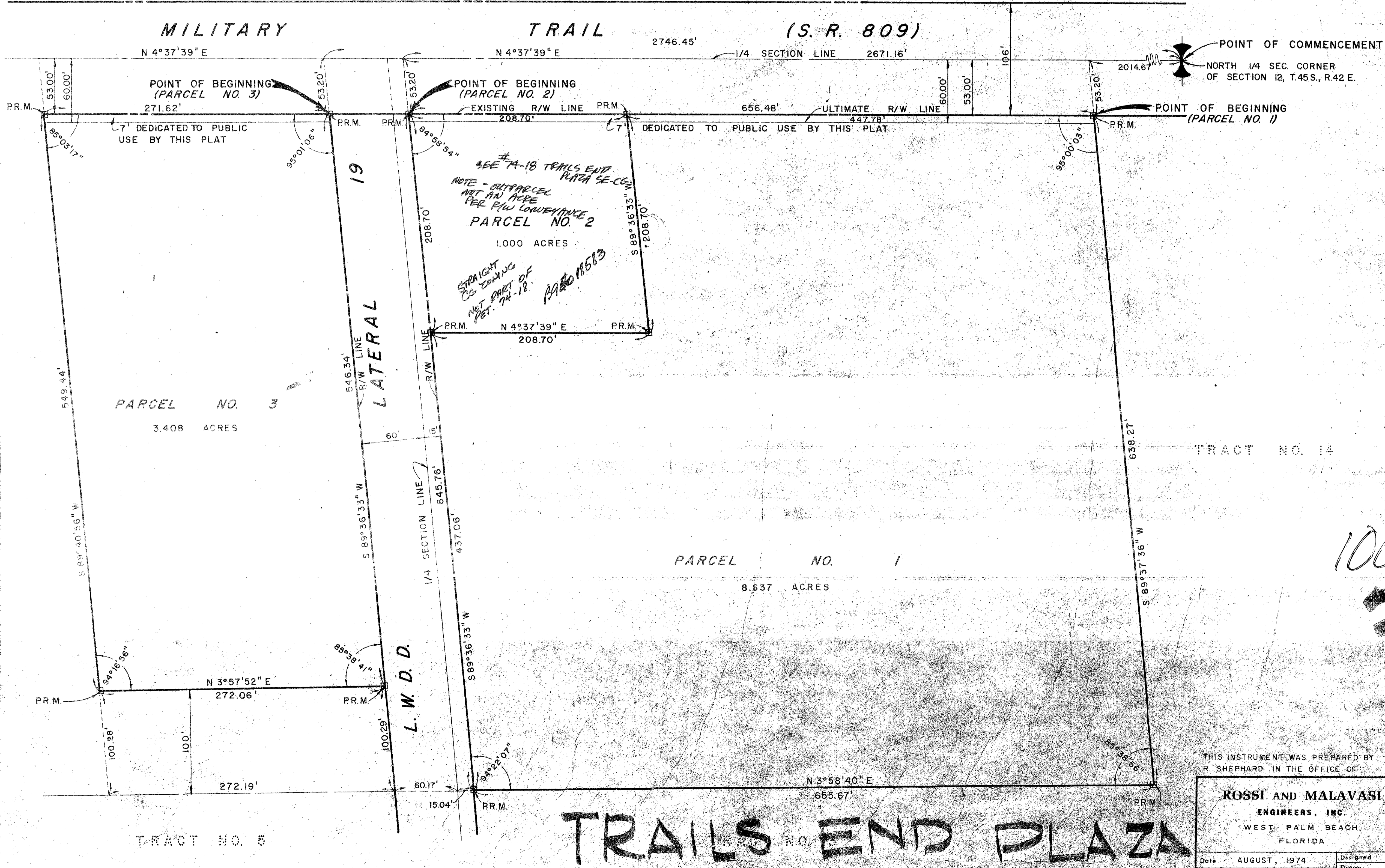
IN SECTION 12, TOWNSHIP 45 SOUTH, RANGE 42 EAST  
PALM BEACH COUNTY, FLORIDA

BEING A REPLAT OF THE AMENDED PLAT OF SECTION 12 FOR MARY A. LYMAN ET AL  
RECORDED IN PLAT BOOK 9, PAGE 74, PUBLIC RECORDS OF PALM BEACH COUNTY, FLORIDA

IN 3 SHEETS SHEET NO. 3

34

STATE OF FLORIDA }  
 COUNTY OF PALM BEACH }  
 This Plat was filed for record at \_\_\_\_\_ M.  
 this \_\_\_\_\_ day of \_\_\_\_\_  
 19\_\_\_\_, and duly recorded in Plat Book No.  
 31 on page 37, 38 & 39  
 JOHN B. DUNKLE, Clerk Circuit Court  
 By \_\_\_\_\_, D. C.



208  
437  
645.76

1000-175

31/59

## TRAILS END PLAZA

THIS INSTRUMENT WAS PREPARED BY R. SHEPHARD IN THE OFFICE OF

ROSSI AND MALAVASI ENGINEERS, INC. WEST PALM BEACH, FLORIDA		PLAT OF TRAILS-END PLAZA PALM BEACH COUNTY, FLORIDA IN 3 SHEETS SHEET NO. 3	
Date	AUGUST, 1974	Designed	R. SHEPHARD
Drawn	F. McELROY	Scale	1" = 50'
Checked		Job No.	3048-74
Approved		File No.	

Sheet 3 of 3