

31/47

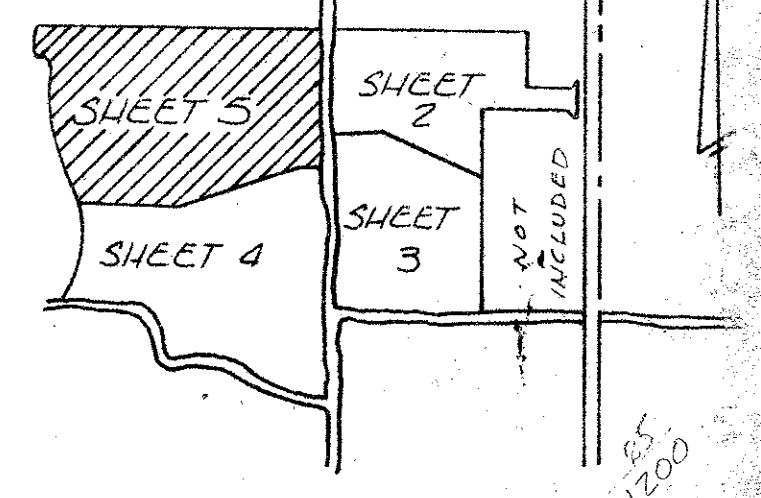
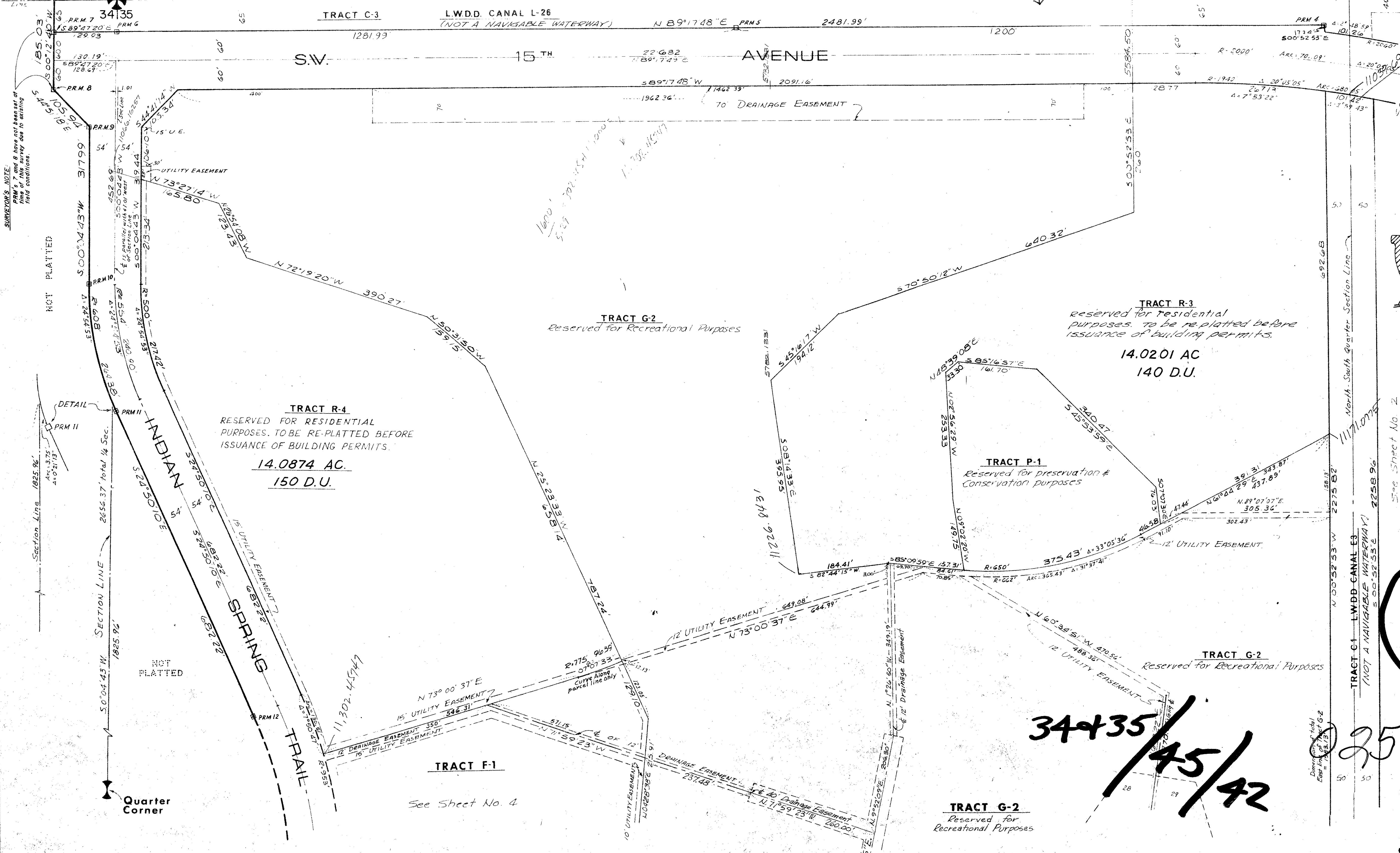
47

INDIAN SPRING PLAT NO. 1

A PLANNED UNIT DEVELOPMENT

SHEET 5 OF 5

SUBDIVISION OF SECTION 26 IN TOWNSHIP 45 SOUTH OF RANGE 42 EAST
PLAT BOOK 28 PAGE 6 2531.26' 11000'

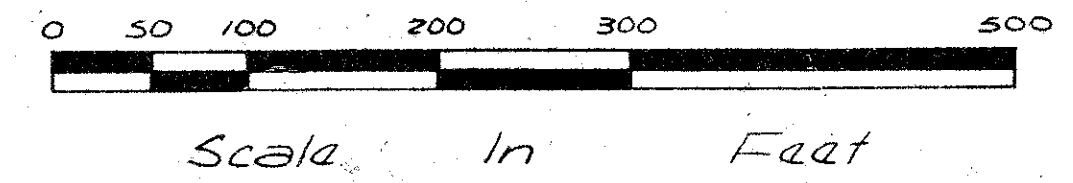


KEY MAP
N.T.S.

35

34435 / 45 / 42

259-000



INDIAN SPRING - NO. 1

Field Book No. E38 Pg. 1	ROBERT E. OWEN & ASSOCIATES, INC. ENGINEERS · PLANNERS · SURVEYORS WEST PALM BEACH FLORIDA	INDIAN SPRING PLAT NO. 1	NO. 73-1198
Design LA GEO		SECTIONS 34 AND 35	" = 10'
Drawn L. NEAL		TWP. 45 So., R. 42 E.	
Checked D. WHITE		PALM BEACH COUNTY, FLORIDA	
Field T. WHITLEY	Approved	Date AUG 1974	SHEET 5 OF 5

31/47