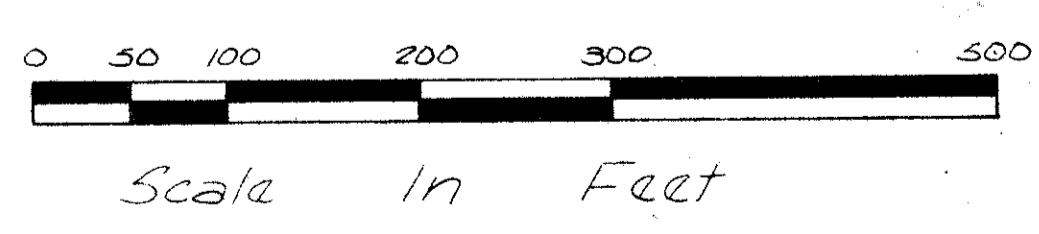
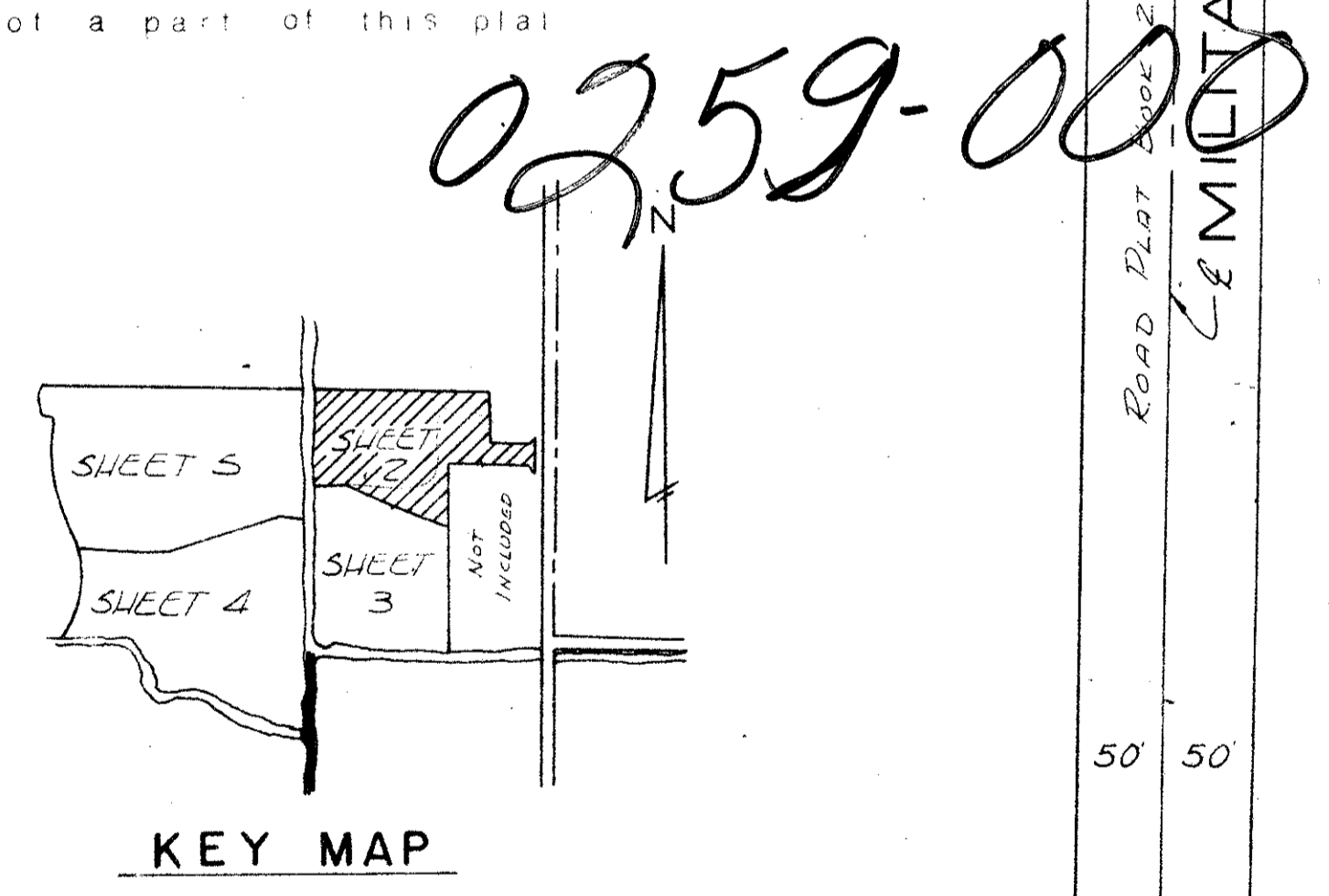
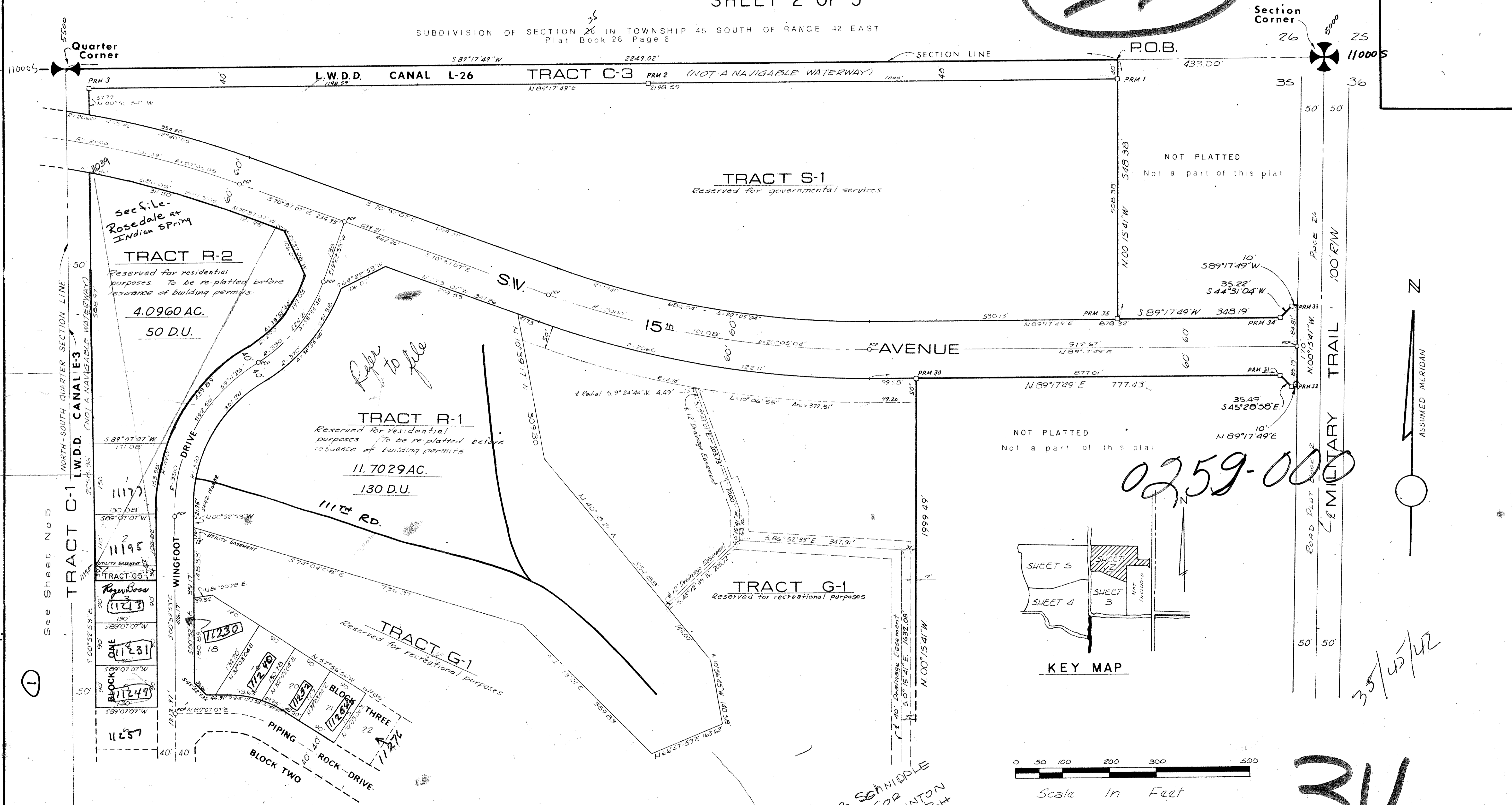


31/44

INDIAN SPRING PLAT NO. 1 A PLANNED UNIT DEVELOPMENT SHEET 2 OF 5

35

SUBDIVISION OF SECTION 26 IN TOWNSHIP 45 SOUTH OF RANGE 42 EAST
Plat Book 26 Page 6



Bub Schmipple
Epic Corp
100 E. LINTON
DEL RAY Bldg
33444

INDIAN SPRING

PLAT NO. 1

Field Book No. E 38 Pg. 1	ROBERT E. OWEN & ASSOCIATES, INC. ENGINEERS - PLANNERS - SURVEYORS WEST PALM BEACH FLORIDA	INDIAN SPRING - PLAT No. 1 SECTIONS 34 AND 35 TWP. 45 So., RGE. 42E PALM BEACH COUNTY, FLORIDA	Job No. 73-1198
Design L.A. GEO. Drawn L. NEAL Checked W. WHITE Approved T. WHITNEY			Scale 1" = 100'
Date AUG. 1974		SHEET 2 OF 5	Sheet of 5 File No. BF-2215

31/44