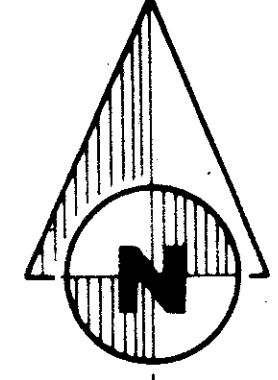
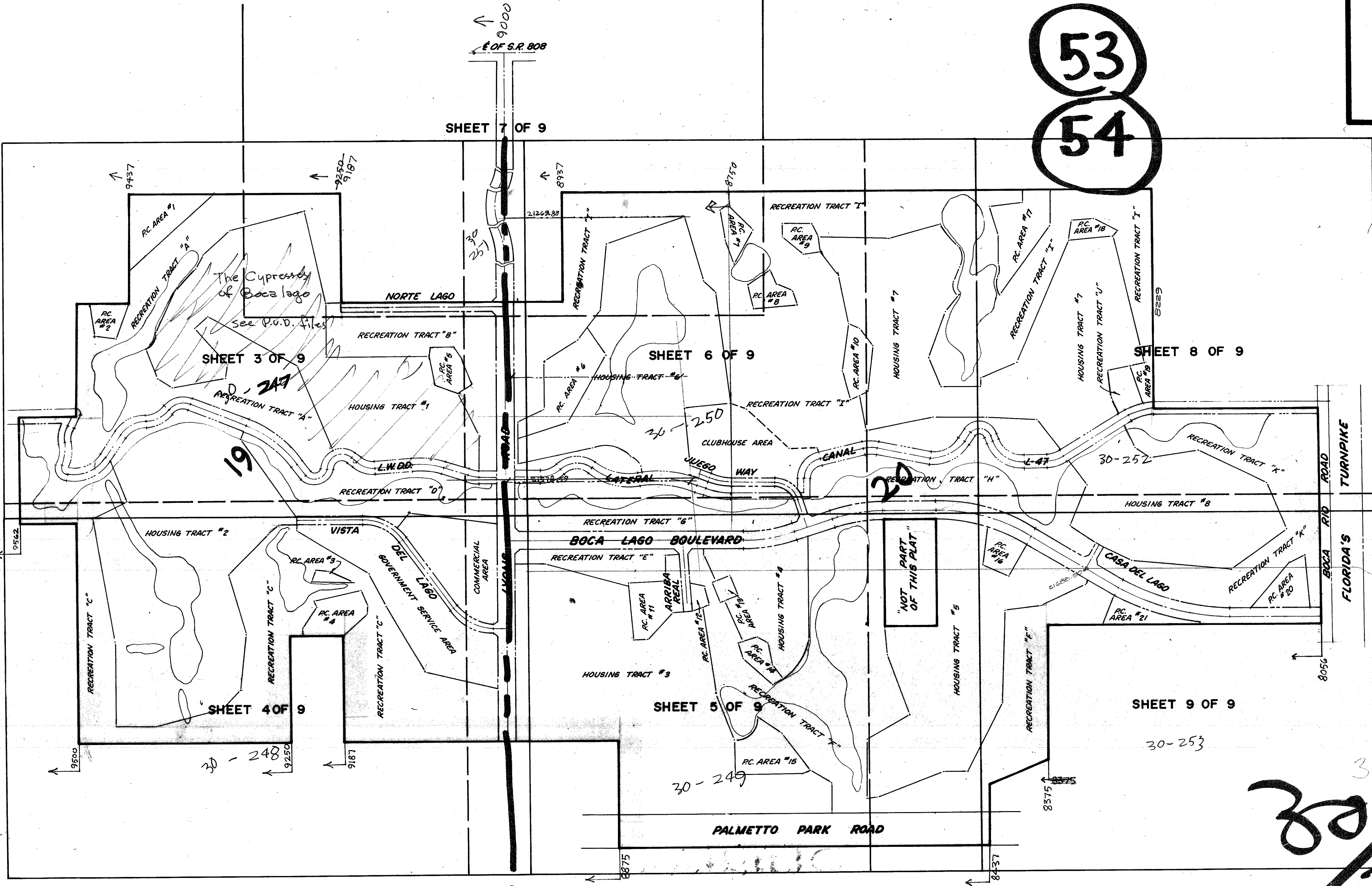


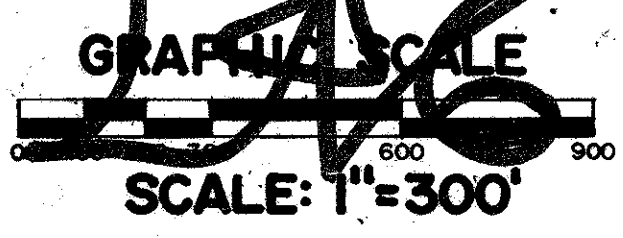
(A PLANNED UNIT DEVELOPMENT)
BOCA LAGO
INDEX FOR SHEETS 3 OF 9 THRU 9 OF 9

53
54



21578.59
104.91
21683.50

"NOT PART OF THIS PLAN"



1000-201

BOCA LAGO

This instrument was prepared by Robert R. Game of **Dailey-Folger, Inc.**
1028 South Military Trail, West Palm Beach, Florida, 965-8787, for the
firm of **CONRAD W. SCHAEFER, Consulting Engineers**, West Palm Beach, Florida.

SHEET 2 OF 9
CONRAD W. SCHAEFER CONSULTING ENGINEER
PALM BEACH, FLORIDA

DRAWING NUMBER
30/246

DRAWING NUMBER
PLAN HOLD CORPORATION - IRVINE, CALIFORNIA
REGISTERED PROFESSIONAL ENGINEER
REGISTERED PROFESSIONAL LANDSCAPE ARCHITECT
REGISTERED PROFESSIONAL SURVEYOR
REGISTERED PROFESSIONAL CIVIL ENGINEER
REGISTERED PROFESSIONAL ARCHITECT
REGISTERED PROFESSIONAL ELECTRICAL ENGINEER
REGISTERED PROFESSIONAL MECHANICAL ENGINEER
REGISTERED PROFESSIONAL CHEMICAL ENGINEER
REGISTERED PROFESSIONAL INDUSTRIAL ENGINEER
REGISTERED PROFESSIONAL AERONAUTICAL ENGINEER
REGISTERED PROFESSIONAL NUCLEAR ENGINEER
REGISTERED PROFESSIONAL METALLURGICAL ENGINEER
REGISTERED PROFESSIONAL AGRICULTURAL ENGINEER
REGISTERED PROFESSIONAL FORESTRY ENGINEER
REGISTERED PROFESSIONAL MINING ENGINEER
REGISTERED PROFESSIONAL PETROLEUM ENGINEER
REGISTERED PROFESSIONAL SANITARY ENGINEER
REGISTERED PROFESSIONAL TRANSPORTATION ENGINEER
REGISTERED PROFESSIONAL WATER RESOURCES ENGINEER
REGISTERED PROFESSIONAL ENVIRONMENTAL ENGINEER
REGISTERED PROFESSIONAL SAFETY ENGINEER
REGISTERED PROFESSIONAL POLICE ENGINEER
REGISTERED PROFESSIONAL FIRE ENGINEER
REGISTERED PROFESSIONAL MARINE ENGINEER
REGISTERED PROFESSIONAL AERONAUTICAL ENGINEER
REGISTERED PROFESSIONAL NUCLEAR ENGINEER
REGISTERED PROFESSIONAL METALLURGICAL ENGINEER
REGISTERED PROFESSIONAL AGRICULTURAL ENGINEER
REGISTERED PROFESSIONAL FORESTRY ENGINEER
REGISTERED PROFESSIONAL MINING ENGINEER
REGISTERED PROFESSIONAL PETROLEUM ENGINEER
REGISTERED PROFESSIONAL SANITARY ENGINEER
REGISTERED PROFESSIONAL TRANSPORTATION ENGINEER
REGISTERED PROFESSIONAL WATER RESOURCES ENGINEER
REGISTERED PROFESSIONAL ENVIRONMENTAL ENGINEER
REGISTERED PROFESSIONAL SAFETY ENGINEER
REGISTERED PROFESSIONAL POLICE ENGINEER
REGISTERED PROFESSIONAL FIRE ENGINEER
REGISTERED PROFESSIONAL MARINE ENGINEER

DRAWING NUMBER
PLAN HOLD CORPORATION - IRVINE, CALIFORNIA
REGISTERED PROFESSIONAL ENGINEER
REGISTERED PROFESSIONAL LANDSCAPE ARCHITECT
REGISTERED PROFESSIONAL SURVEYOR
REGISTERED PROFESSIONAL CIVIL ENGINEER
REGISTERED PROFESSIONAL ARCHITECT
REGISTERED PROFESSIONAL ELECTRICAL ENGINEER
REGISTERED PROFESSIONAL MECHANICAL ENGINEER
REGISTERED PROFESSIONAL CHEMICAL ENGINEER
REGISTERED PROFESSIONAL INDUSTRIAL ENGINEER
REGISTERED PROFESSIONAL AERONAUTICAL ENGINEER
REGISTERED PROFESSIONAL NUCLEAR ENGINEER
REGISTERED PROFESSIONAL METALLURGICAL ENGINEER
REGISTERED PROFESSIONAL AGRICULTURAL ENGINEER
REGISTERED PROFESSIONAL FORESTRY ENGINEER
REGISTERED PROFESSIONAL MINING ENGINEER
REGISTERED PROFESSIONAL PETROLEUM ENGINEER
REGISTERED PROFESSIONAL SANITARY ENGINEER
REGISTERED PROFESSIONAL TRANSPORTATION ENGINEER
REGISTERED PROFESSIONAL WATER RESOURCES ENGINEER
REGISTERED PROFESSIONAL ENVIRONMENTAL ENGINEER
REGISTERED PROFESSIONAL SAFETY ENGINEER
REGISTERED PROFESSIONAL POLICE ENGINEER
REGISTERED PROFESSIONAL FIRE ENGINEER
REGISTERED PROFESSIONAL MARINE ENGINEER

DRAWING NUMBER
PLAN HOLD CORPORATION - IRVINE, CALIFORNIA
REGISTERED PROFESSIONAL ENGINEER
REGISTERED PROFESSIONAL LANDSCAPE ARCHITECT
REGISTERED PROFESSIONAL SURVEYOR
REGISTERED PROFESSIONAL CIVIL ENGINEER
REGISTERED PROFESSIONAL ARCHITECT
REGISTERED PROFESSIONAL ELECTRICAL ENGINEER
REGISTERED PROFESSIONAL MECHANICAL ENGINEER
REGISTERED PROFESSIONAL CHEMICAL ENGINEER
REGISTERED PROFESSIONAL INDUSTRIAL ENGINEER
REGISTERED PROFESSIONAL AERONAUTICAL ENGINEER
REGISTERED PROFESSIONAL NUCLEAR ENGINEER
REGISTERED PROFESSIONAL METALLURGICAL ENGINEER
REGISTERED PROFESSIONAL AGRICULTURAL ENGINEER
REGISTERED PROFESSIONAL FORESTRY ENGINEER
REGISTERED PROFESSIONAL MINING ENGINEER
REGISTERED PROFESSIONAL PETROLEUM ENGINEER
REGISTERED PROFESSIONAL SANITARY ENGINEER
REGISTERED PROFESSIONAL TRANSPORTATION ENGINEER
REGISTERED PROFESSIONAL WATER RESOURCES ENGINEER
REGISTERED PROFESSIONAL ENVIRONMENTAL ENGINEER
REGISTERED PROFESSIONAL SAFETY ENGINEER
REGISTERED PROFESSIONAL POLICE ENGINEER
REGISTERED PROFESSIONAL FIRE ENGINEER
REGISTERED PROFESSIONAL MARINE ENGINEER