

30/198

DRAWING NUMBER

DRAWING NUMBER

DRAWING NUMBER

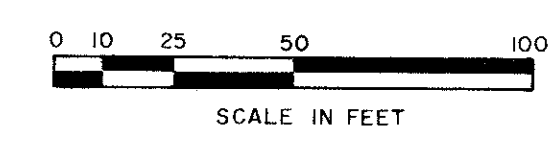
" A PLANNED UNIT DEVELOPMENT "

GOLDEN LAKES VILLAGE SECTION FOUR

IN SECTION 28, TOWNSHIP 43 SOUTH,
RANGE 42 EAST.

46

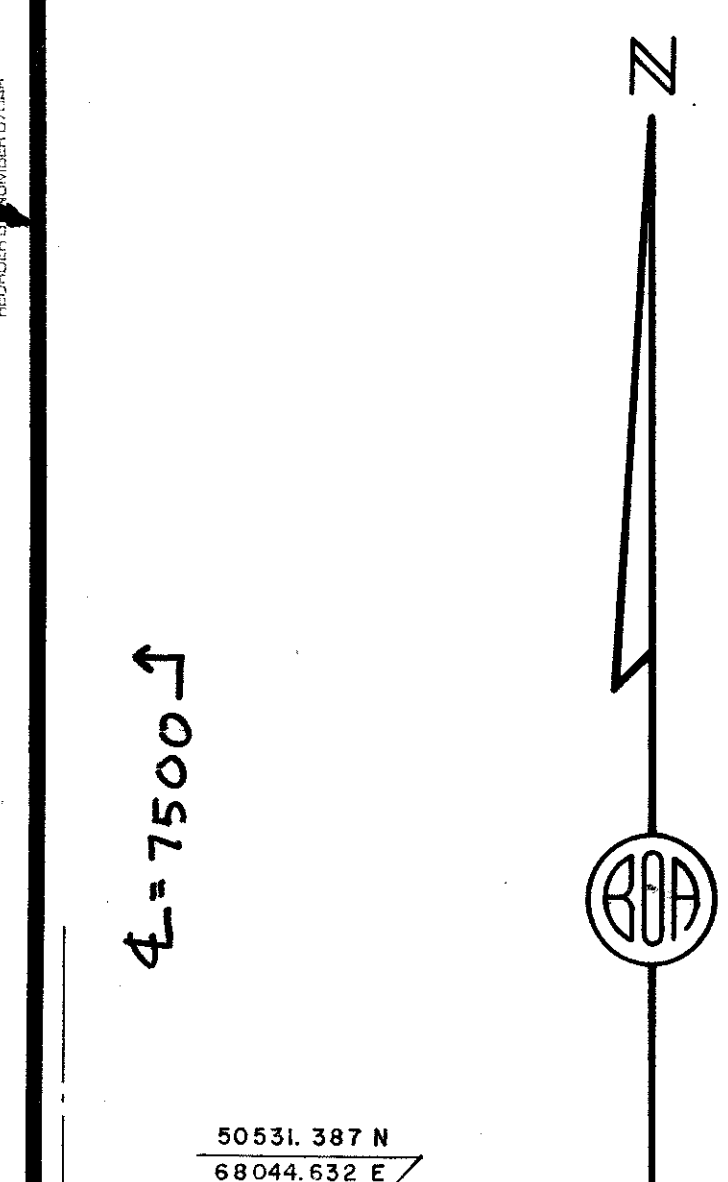
198



STATE OF FLORIDA
COUNTY OF PALM BEACH
This Plat was filed for record at _____ M.
this _____ day of _____
19____ and duly recorded in Plat Book No. _____
on page _____
JOHN B. DUNKLE, Clerk Circuit Court
By _____ D. C.

PALM BEACH FARMS CO. PLAT 9

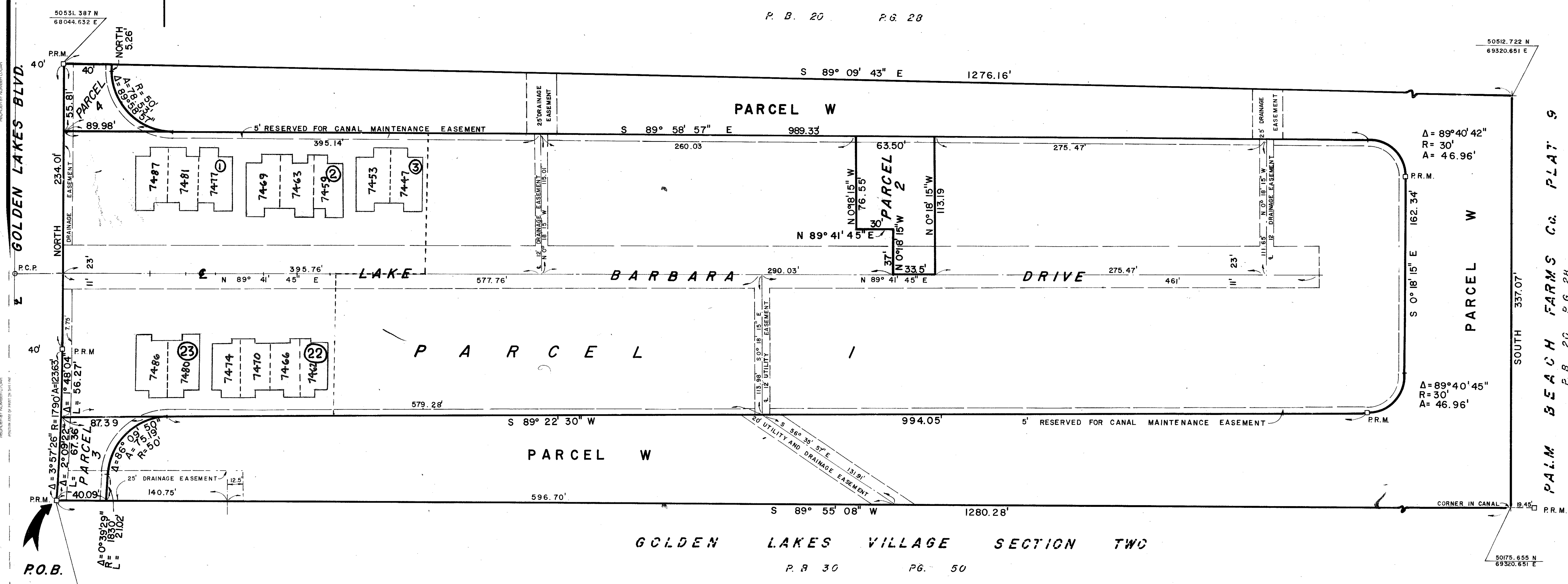
P. B. 20 P. G. 28



GOLDEN LAKES BLVD.

P.O.B.

PALM BEACH FARMS CO. PLAT 9
SOUTH 337.07'
P. B. 20 P. G. 28



GOLDEN LAKES VILLAGE SECTION TWO

P. B. 30 P. G. 50

SHEET TWO OF TWO

BROCKWELL OWEN & ANDERSON ENGINEERS AND ARCHITECTS WEST PALM BEACH, FLORIDA		
GOLDEN LAKES VILLAGE SECTION FOUR IN SECTION 28, TOWNSHIP 43 SOUTH, RANGE 42 EAST.		
FIELD FRALICK	SCALE: 1" = 40'	Job No. 73-1133
FIELD YESTE	DATE: NOV. 1973	Dwg. No. BF 2208-A
FIELD YESTE		
FIELD YESTE		

0251-314

(P.U.D.) GOLDEN LAKES VILLAGE