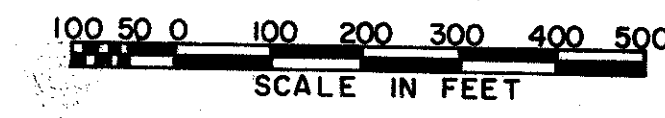


62



STATE OF FLORIDA  
COUNTY OF PALM BEACH  
This Plat was filed for record at \_\_\_\_\_ M.  
this \_\_\_\_\_ day of \_\_\_\_\_, 1972,  
and duly recorded in Plat Book No. \_\_\_\_\_  
on page \_\_\_\_\_  
JOHN B. DUNKLE, Clerk Circuit Court  
By \_\_\_\_\_, D.C.



PLAT OF  
**PALM BEACH  
LITTLE RANCHES EAST  
OF WELLINGTON**  
IN PART OF SECTION 2, TWP. 44 S., RGE. 41 E.  
PALM BEACH COUNTY, FLORIDA  
IN 2 SHEETS SHEET NO. 2

GEE & JENSON  
CONSULTING ENGINEERS, INC.  
WEST PALM BEACH, FLORIDA  
DECEMBER 1972

NOT PLATTED

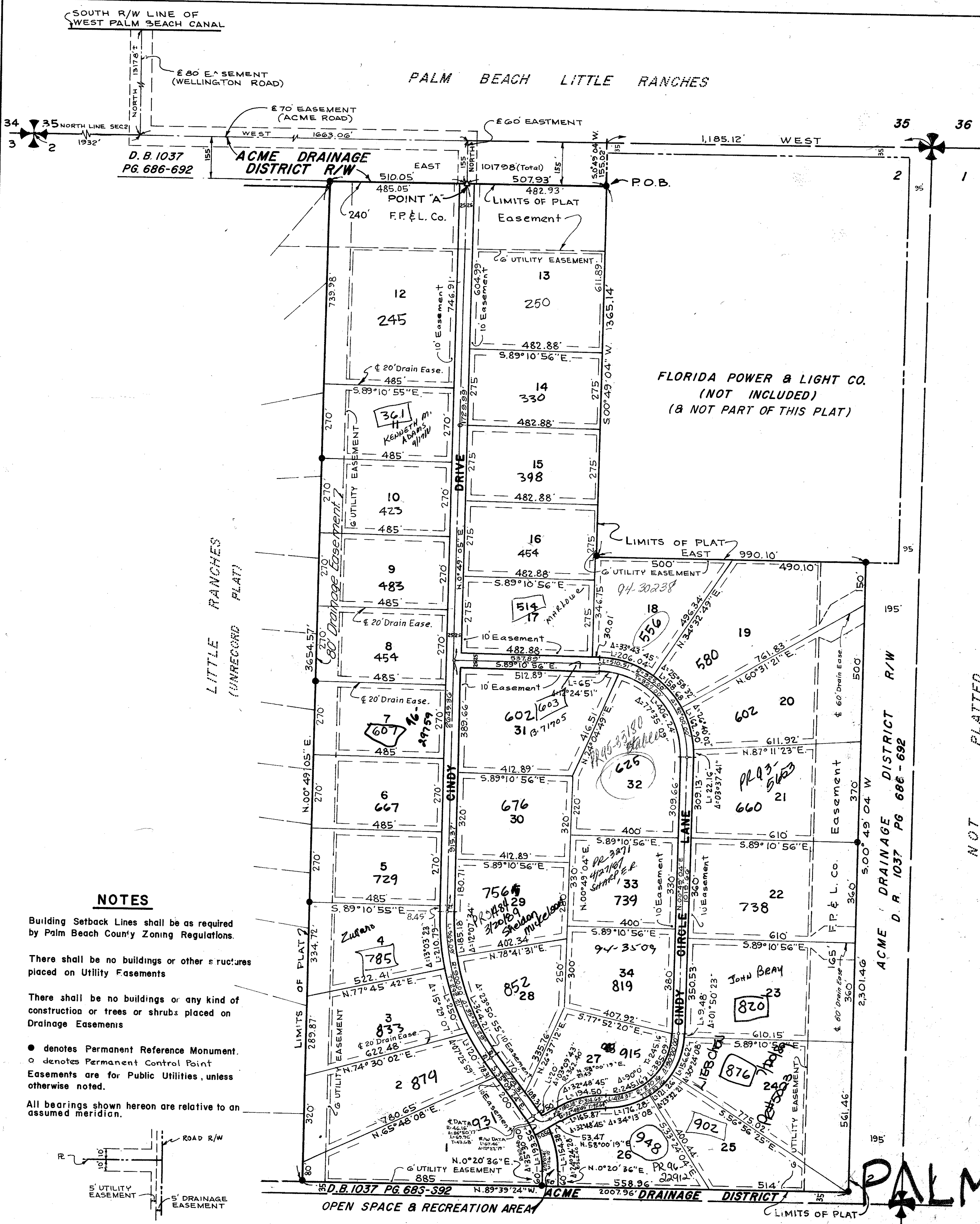
**PALM BEACH LITTLE RANCHES**

30/159

30/159

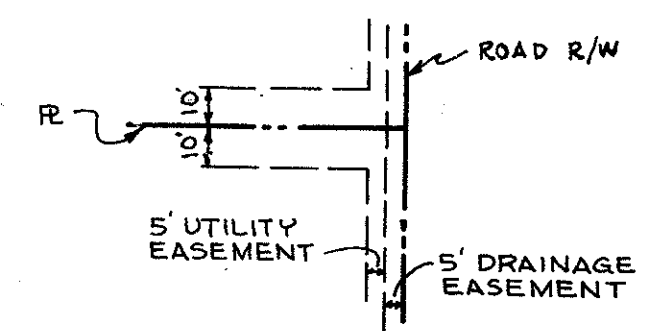
AR/PUD  
needs ACME APPROVAL

1000-1916



**NOTES**

- Building Setback Lines shall be as required by Palm Beach County Zoning Regulations.
- There shall be no buildings or other structures placed on Utility Easements
- There shall be no buildings or any kind of construction or trees or shrubs placed on Drainage Easements
- denotes Permanent Reference Monument.
- denotes Permanent Control Point
- Easements are for Public Utilities, unless otherwise noted.
- All bearings shown hereon are relative to an assumed meridian.



TYPICAL EASEMENT

NOT PLATTED