

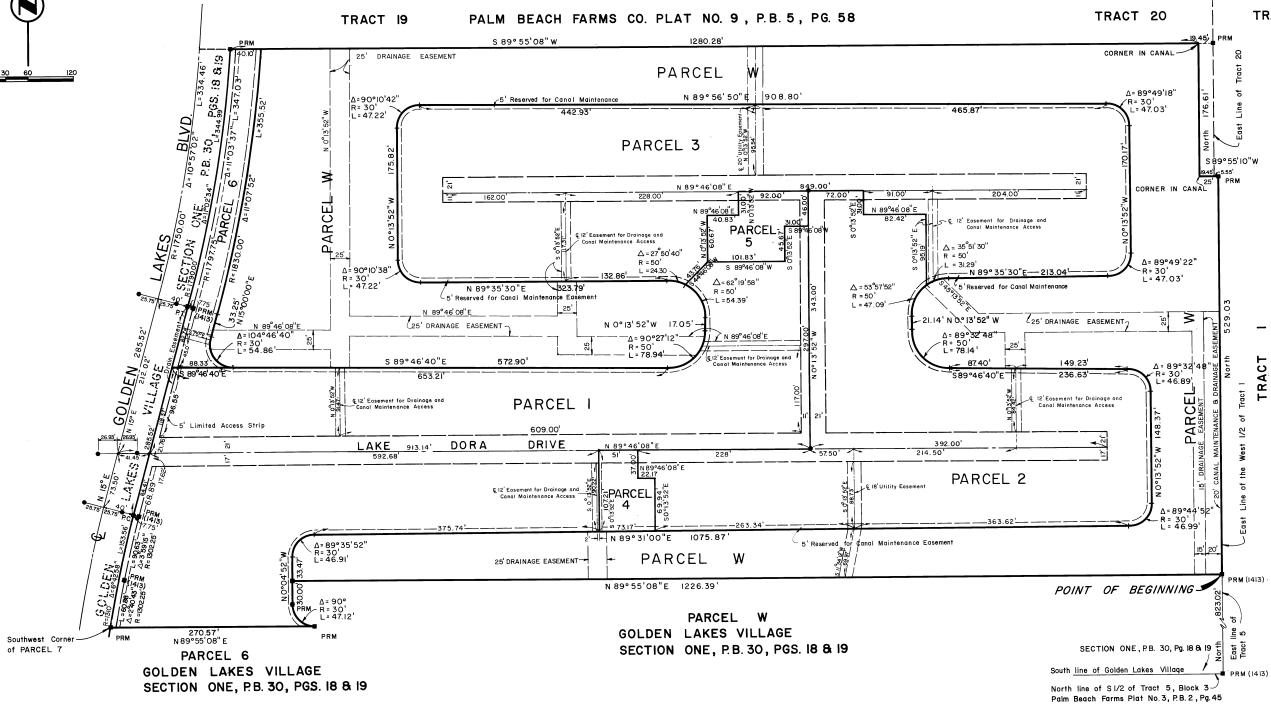
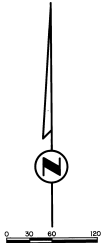
This is not a certified copy

"A PLANNED UNIT DEVELOPMENT"

GOLDEN LAKES VILLAGE SECTION TWO

BEING A REPLAT OF PART OF TRACTS 19 & 20, BLOCK 1, PALM BEACH FARMS COMPANY PLAT NO. 9, RECORDED IN PLAT BOOK 5, PAGE 58; AND OF PART OF TRACTS 1 & 2, BLOCK 3, PALM BEACH FARMS COMPANY PLAT NO. 3, RECORDED IN PLAT BOOK 2, PAGE 45; AND OF PARCEL 7 AND OF PART OF THE 7.75' WIDE DRAINAGE EASEMENT LYING EAST OF AND ADJACENT TO GOLDEN LAKES BOULEVARD OF GOLDEN LAKES VILLAGE SECTION ONE, RECORDED IN PLAT BOOK 30, PGS. 18 & 19, PALM BEACH COUNTY, FLORIDA

51



- = Permanent Reference Monument
- = Permanent Control Point

PARCEL W
GOLDEN LAKES VILLAGE
SECTION ONE, P.B. 30, PGS. 18 & 19

PARCEL 6
GOLDEN LAKES VILLAGE
SECTION ONE, P.B. 30, PGS. 18 & 19

SECTION ONE, P.B. 30, Pg. 18 & 19
North line of S 1/2 of Tract 5, Block 3 -
Palm Beach Farms Plat No. 3, P.B. 2, Pg. 45

TRACT 19
PALM BEACH FARMS CO. PLAT NO. 9, P.B. 5, PG. 58

TRACT 20

TRACT 1
PALM BEACH FARMS COMPANY PLAT NO. 3
P.B. 2, PG. 45

73-3-000