

PLAT OF GRAMERCY PARK, UNIT 2, IN 2 SHEETS SHEET NO. 2

NOT PLATTED

UNPLATTED

DRAWING NUMBER 29-158

DRAWING NUMBER

DRAWING NUMBER

DRAWING NUMBER

REPLATTED See 27-178

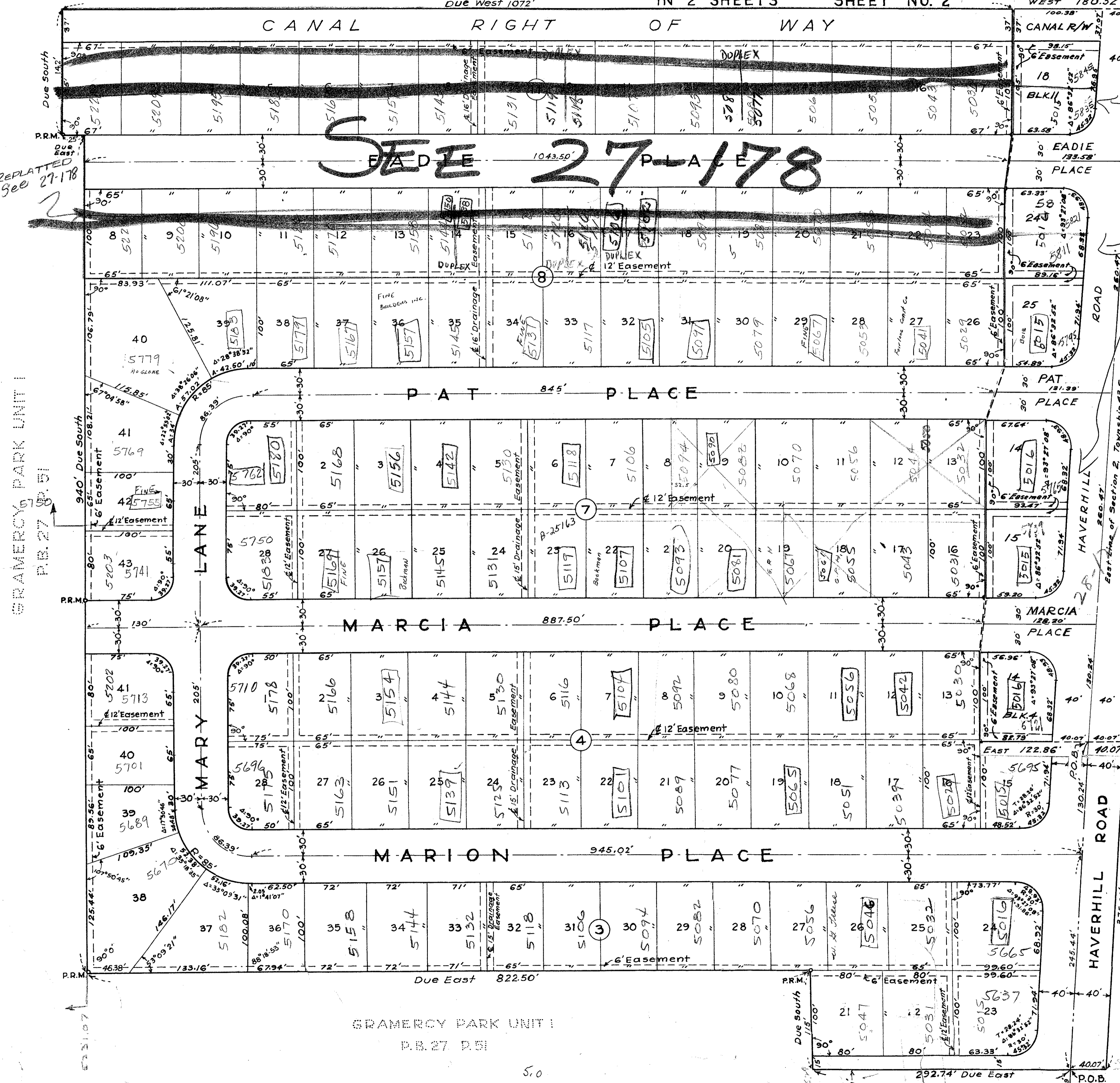
SEE 27-178

GRAMERCY PARK UNIT I P.B. 27 P. 51

GRAMERCY PARK UNIT No. 3

ADAMS SUBDIVISION P.B. 20 P. 23

ADAMS SUBDIVISION P.B. 20 P. 23



NOTE: All Block Corners are rounded with a 25 ft. radius curve, unless otherwise noted. Easements are for Public Utilities, unless otherwise shown. Building Setback Lines shall be as required by Palm Beach County, Florida. There shall be no buildings or other structures placed on Utility Easements. There shall be no buildings or any kind of construction or trees or shrubs placed on Drainage Easements.

Handwritten calculations: 27/158 & 28/12, 1 & 2 43-42

1000-310

JAMES D. CARLTON, INC. ENGINEERS & SURVEYORS. UNIT NO. 2 #3 GRAMERCY PARK IN 2 SHEETS SHEET NO. 2. DATE: OCTOBER 1962

GRAMERCY PARK - UNIT 2