

Plat of SANDALFOOT COVE, SECTION THREE

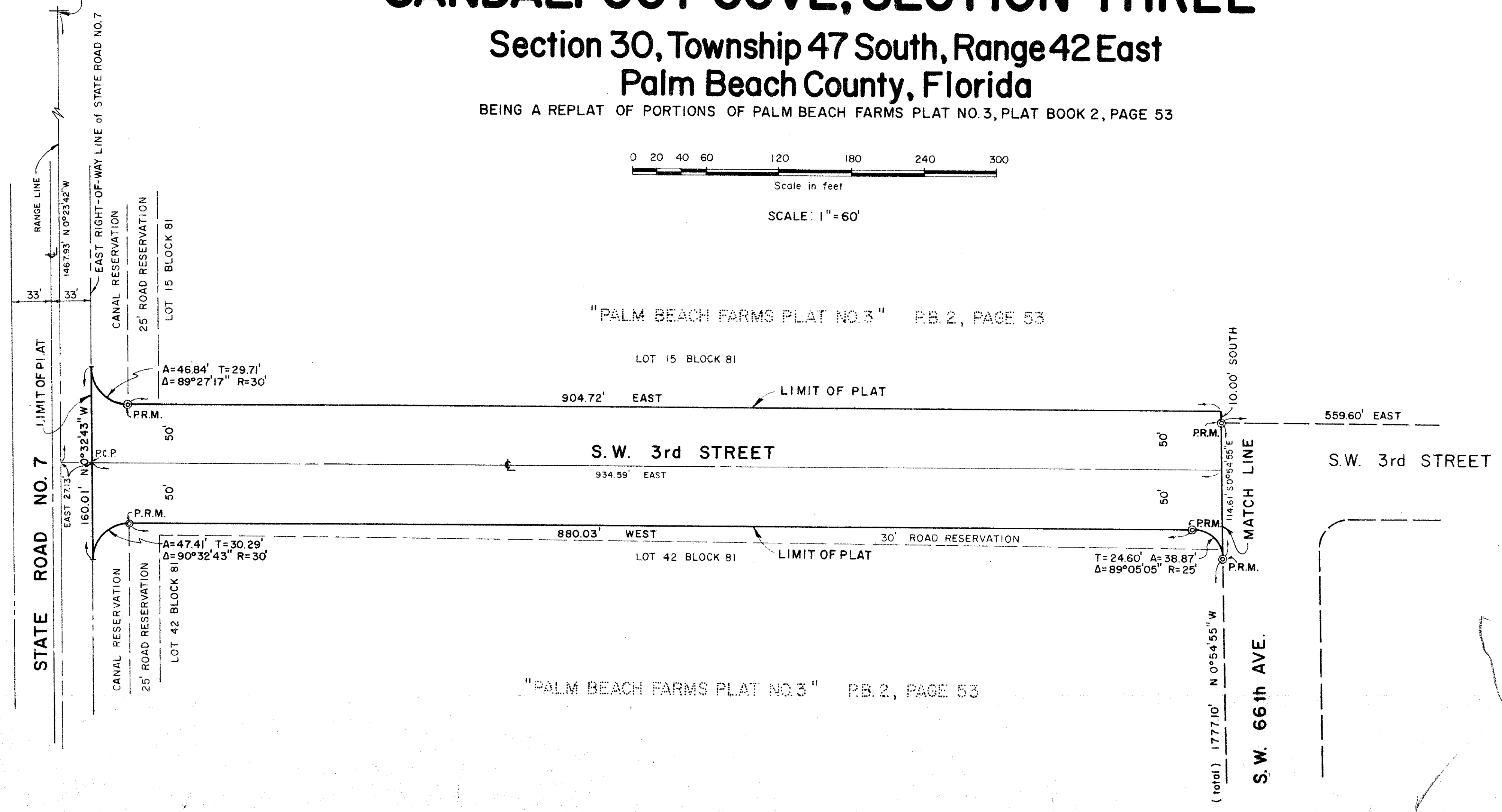
Section 30, Township 47 South, Range 42 East Palm Beach County, Florida

BEING A REPLAT OF PORTIONS OF PALM BEACH FARMS PLAT NO. 3, PLAT BOOK 2, PAGE 53



SCALE: 1" = 60'

N.W. CORNER
SEC. 30 - 47 - 42



NOTES:

1. P.R.M. indicates Permanent Reference Monument.
2. P.C.P. indicates Permanent Control Point.
3. Bearings refer to an assumed Meridian of the Range Line, Sec. 30-47-42.

03060307

0306-322

Prepared by: RALPH BUCHANAN
 McLaughlin Engineering Co.
 400 N.E. 3rd Avenue
 Fort Lauderdale
 Florida
 33301

29/142

DRAWING NUMBER
29-142

DRAWING NUMBER
PLAN HOLD CORPORATION • FT. LAUDERDALE, FLORIDA
REGISTERED PROFESSIONAL ENGINEER

DRAWING NUMBER
PLAN HOLD CORPORATION • FT. LAUDERDALE, FLORIDA
REGISTERED PROFESSIONAL ENGINEER

DRAWING NUMBER
PLAN HOLD CORPORATION • FT. LAUDERDALE, FLORIDA
REGISTERED PROFESSIONAL ENGINEER