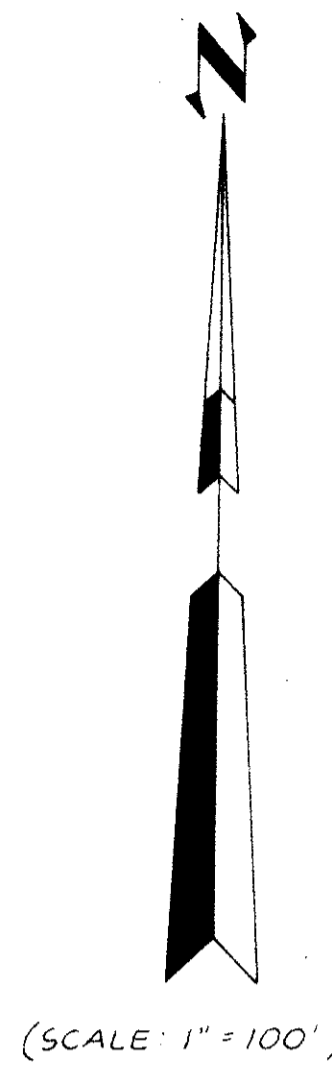


delray dunes second section

34

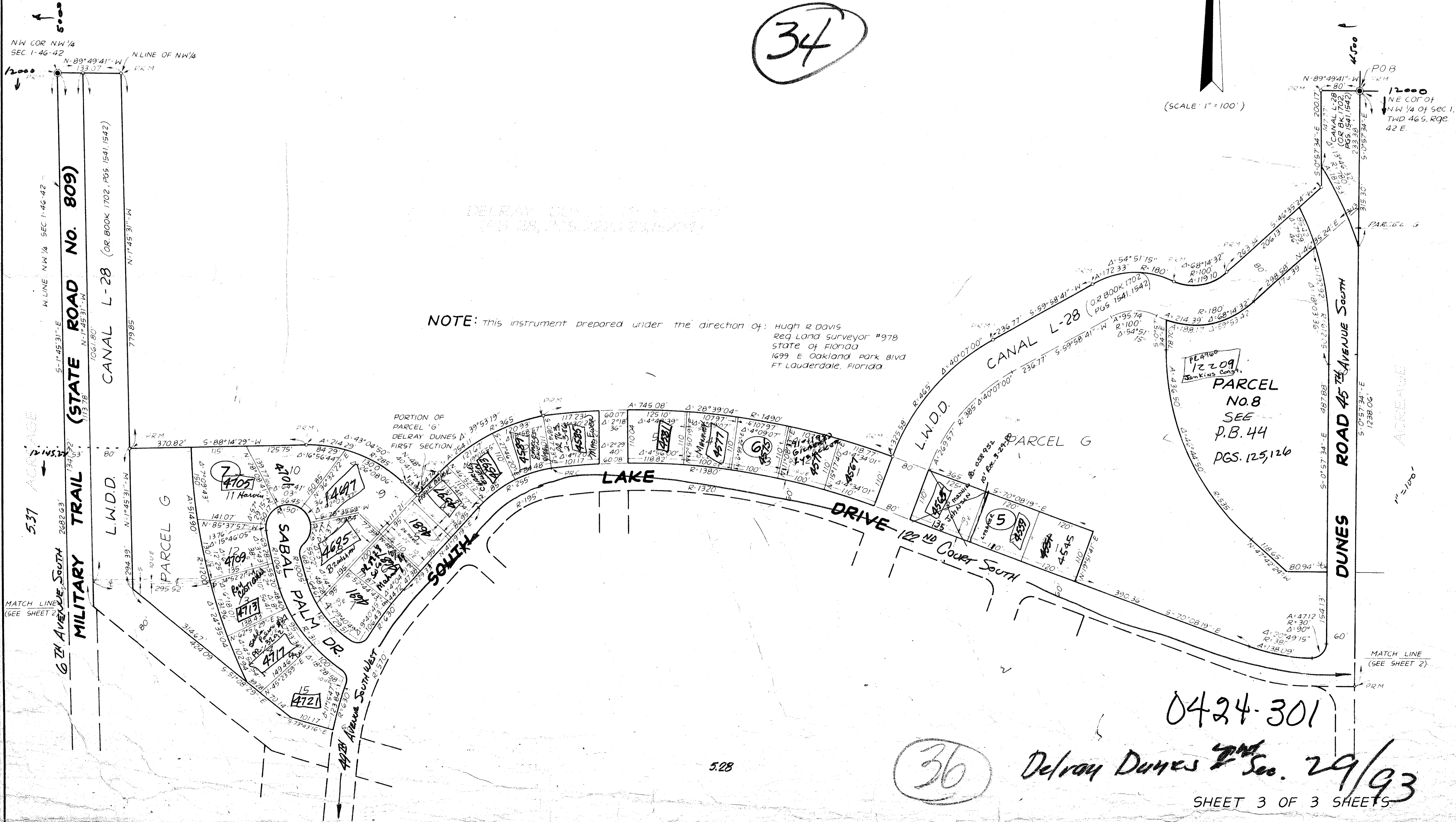


DRAWING NUMBER
29-93

DRAWING NUMBER

DRAWING NUMBER

DRAWING NUMBER



NOTE: This instrument prepared under the direction of: Hugh R. Davis
Reg. Land Surveyor #978
STATE OF FLORIDA
1699 E. Oakland Park Blvd
Ft. Lauderdale, Florida.

0424-301

36

Delray Dunes 2nd Sec. 29/93