

DRAWING NUMBER
28-228

DRAWING NUMBER

DRAWING NUMBER

DRAWING NUMBER

PLAN-HOLD CORPORATION • IRVINE, CALIFORNIA
REGISTERED PROFESSIONAL ENGINEER
PROFESSIONAL SEAL OF STATE OF FLORIDA

PLAN-HOLD CORPORATION • IRVINE, CALIFORNIA
REGISTERED PROFESSIONAL ENGINEER
PROFESSIONAL SEAL OF STATE OF FLORIDA

PLAN-HOLD CORPORATION • IRVINE, CALIFORNIA
REGISTERED PROFESSIONAL ENGINEER
PROFESSIONAL SEAL OF STATE OF FLORIDA

PLAN-HOLD CORPORATION • IRVINE, CALIFORNIA
REGISTERED PROFESSIONAL ENGINEER
PROFESSIONAL SEAL OF STATE OF FLORIDA

822/82

28/228

BOUNDARY PLAT

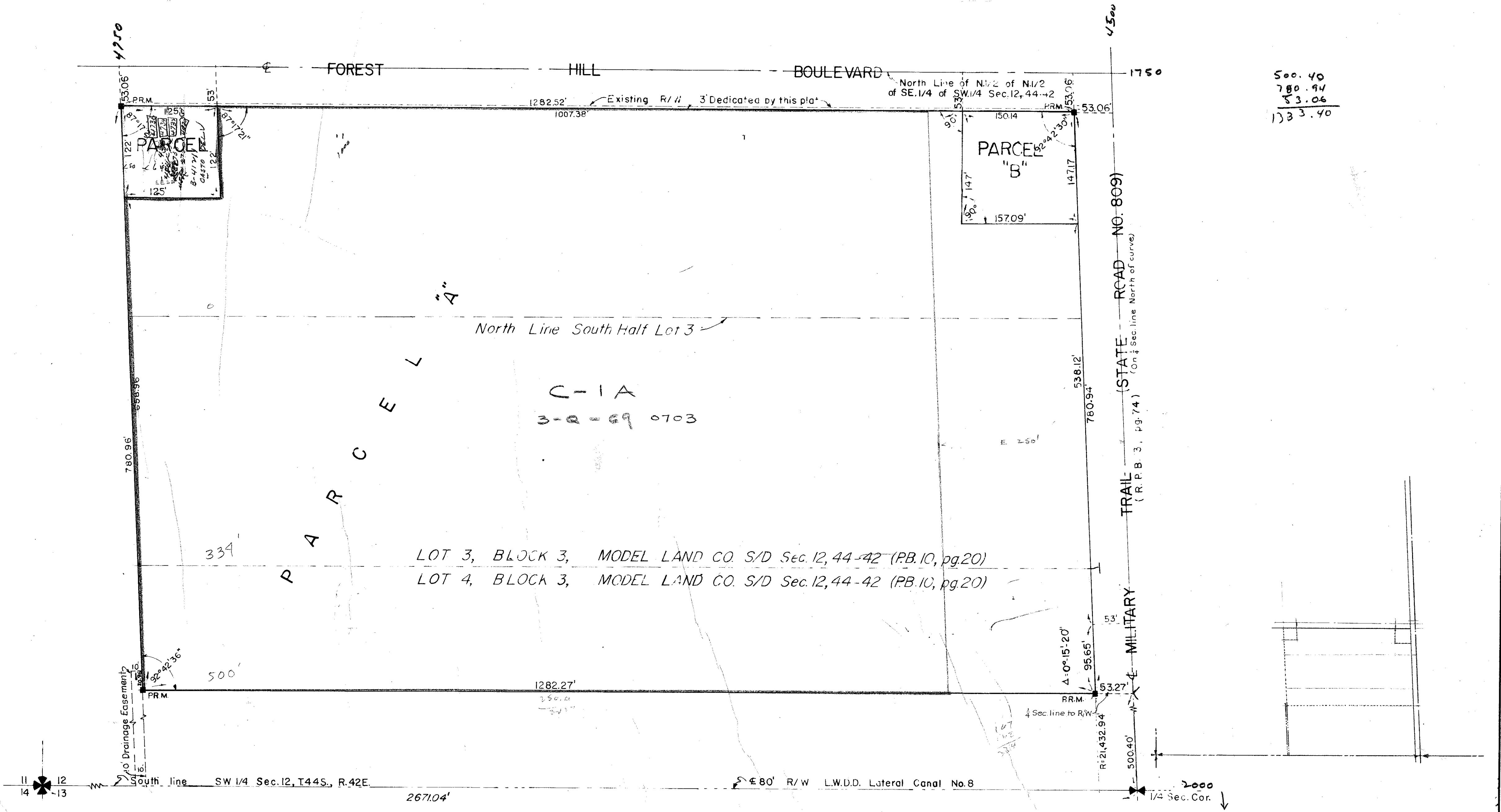
LANDS IN SECTION 12, TOWNSHIP 44 SOUTH, RANGE 42 EAST PALM BEACH COUNTY, FLORIDA

BEING A REPLAT OF PORTIONS OF LOTS 3 AND 4 IN BLOCK 3 OF MODEL LAND COMPANY'S SUBDIVISION OF SECTION 12, TWP. 44 S., R. 42 E., KNOWN AS PALM BEACH PLANTATIONS, AS RECORDED IN PLAT BOOK 10, AT PAGE 20, PUBLIC RECORDS OF PALM BEACH COUNTY, FLORIDA.

SHEET 2 OF 2 SHEETS

32

STATE OF FLORIDA
COUNTY OF PALM BEACH
This Plat was filed for record at this day of 19 and duly recorded in Plat Book No. on page
JOHN B. DUNKLE, Clerk Circuit Court
By _____, D. C.



500.40
780.94
53.06
1333.40

BROCKWAY, OWEN & ANDERSON
ENGINEERS, INCORPORATED
WEST PALM BEACH, FLORIDA

BOUNDARY PLAT
SHEET 2 OF 2 SHEETS
LANDS IN SEC. 12, TWP. 44 S., RGE. 42 E.
PALM BEACH COUNTY, FLORIDA

FIELD: A. GLOER	SCALE: 1" = 80'	Job No. 69-244
OFFICE: G. H. LIBBY		
DR. BY: D. G. SELL	DATE: APRIL, 1969	Dwg. No.
FIELD BK. C 111/1		