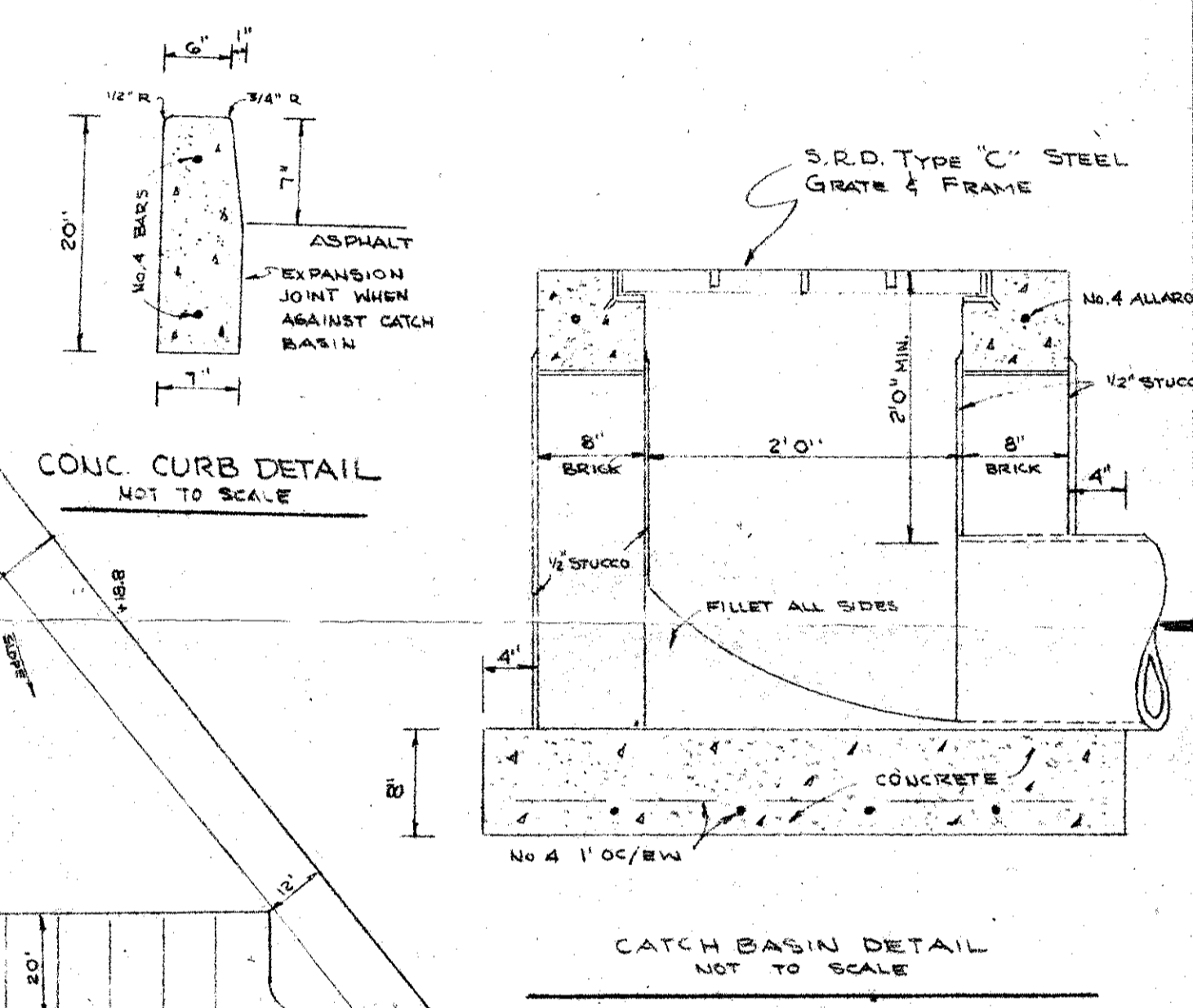


ENDWALL DIMENSIONS					
OPENING	WALL	FOOTING			
D	G	H	B	E	F
21"	7"	2'9"	1'6"	2'2"	1'6"
15"	5"	2'3"	1'6"	2'2"	1'6"
12"	4"	2'	1'6"	2'2"	1'6"



- NOTES:
- EXISTING ELEVATIONS SHOWN THUS + 19.1
 - PROPOSED ELEVATIONS SHOWN THUS
 - ELEVATIONS SHOWN REFER TO U.S.C. & G.S. DATUM
 - PARKING SPACES 10'x20' MIN.
 - DRAINAGE DESIGN CRITERIA:
COEFFICIENT = 0.80 - RAINFALL = 5.6"

PLAN No. 2 OF PROPOSED IMPROVEMENTS FOR
CYPRESS VILLAS

A PROPOSED PLAT OF A PORTION OF THE
NORTHWEST QUARTER OF SECTION 24, TOWN-
SHIP 45 SOUTH, RANGE 42 EAST, PALM BEACH
COUNTY, FLORIDA.

O'BRIEN, SUTER & O'BRIEN, INC
ENGINEERS - SURVEYORS

DATE: OCTOBER 1966	REVISION:	FIELD BOOK PAGE B 36 12	ORDER NO. 66-342 PB
SCALE: 1"=30'			