

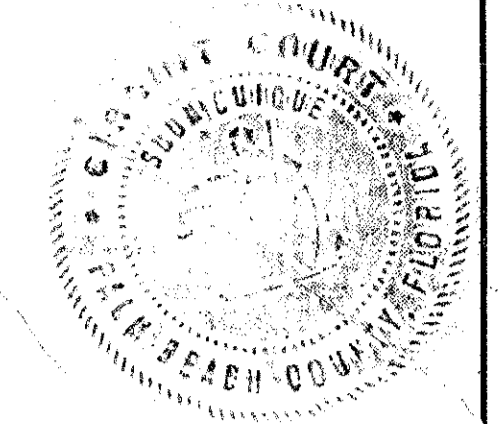
DRAWING NUMBER
28-124

PALM BEACH COUNTY INDUSTRIAL PARK

PLAT NO. 2

BEING A PORTION OF TRACT 4, BLOCK 4, PALM BEACH FARMS Co.,
PLAT NO. 3, RECORDED IN PLAT BOOK 2, PAGE 46, PUBLIC RECORDS
OF PALM BEACH COUNTY, FLORIDA.
(IN SECS. 27 & 28, TWP. 43 S., RGE. 42 E.)

C-2
3-V-661103
46 31

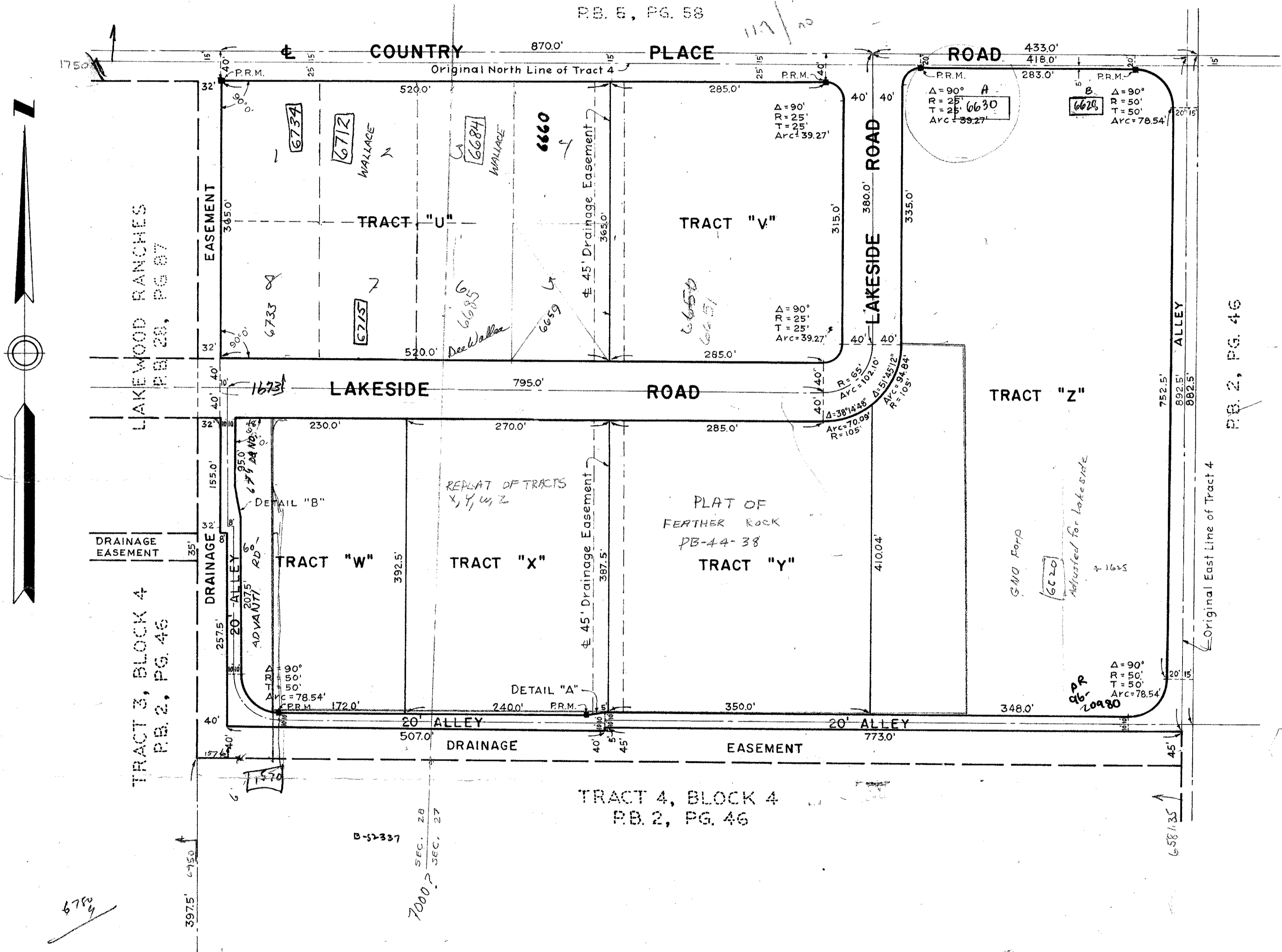


STATE OF FLORIDA
COUNTY OF PALM BEACH ss.
This Plat was filed for record at 4:38 P.M.
this 17th day of October
1966 and duly recorded in Plat Book No.
28 on page 124.
JOHN B. DUNKLE, Clerk Circuit Court
By *Beitham Kilom*, D. C.

DRAWING NUMBER

DRAWING NUMBER

DRAWING NUMBER



STATE OF FLORIDA
COUNTY OF PALM BEACH

KNOW ALL MEN BY THESE PRESENTS, that HAWKSBILL CORP., a Florida Corporation, the owners of a tract of land, lying and being in Tract 4, Block 4, PALM BEACH FARMS COMPANY, Plat No. 3, shown hereon as Plat No. 2, Palm Beach County Industrial Park, and being more particularly described as follows:

Tract 4, Block 4, less the west 32 feet of the north 625 feet, and less the West 40 feet of the South 297.5 feet of the North 922.5 feet, and less the South 40 feet of the North 922.5 feet of the East 507.0 feet of the West 547.0 feet, and less the South 45 feet of the North 922.5 feet of the East 773 feet, and less the South 397.5 feet of PALM BEACH FARMS COMPANY Plat No. 3, recorded in Plat Book 2, Page 46, Public Records of Palm Beach County, Florida.

has caused the same to be surveyed and platted as shown hereon, and does hereby dedicate to the perpetual use of the public, the roads, alleys, and easements shown hereon. (Said easements for drainage purposes only)

IN WITNESS WHEREOF, the said Corporation has caused these presents to be signed by its President and attested by its Secretary, and its Corporate Seal affixed hereto this 25th day of August, A.D. 1966.

ATTEST
HAWKSBILL CORP.
By: *Lillian K. Delaware* SECRETARY
By: *Harold G. Maass* PRESIDENT

STATE OF FLORIDA
COUNTY OF PALM BEACH

I HEREBY CERTIFY that on this day, personally appeared before me, an officer duly authorized to administer oaths and take acknowledgements, HAROLD G. MAASS and LILLIAN K. DELAWARE, President and Secretary, respectively, of HAWKSBILL CORP., to me well known and known to me to be the individuals described in and who executed the foregoing dedication, and they acknowledged before me that they executed the same as such officers of said Corporation, by and with authority of its Board of Directors for the purposes therein expressed.

WITNESS my hand and official seal at Palm Beach
County of Palm Beach, State of Florida
this 25th day of August, A.D. 1966.

Eric M. Simick
Notary Public

My Commission Expires: Dec. 25, 1966

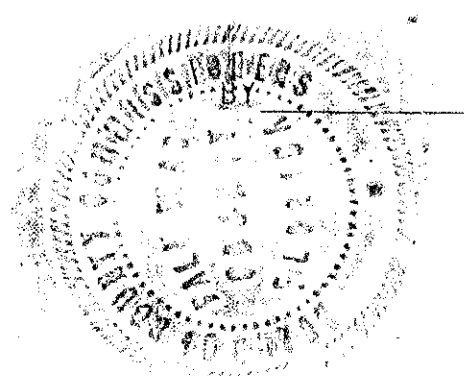
STATE OF FLORIDA
COUNTY OF PALM BEACH

I HEREBY CERTIFY that the plat shown hereon is a true and correct representation of a survey made under my direction, of the property described hereon, and that said survey is accurate to the best of my knowledge and belief, and that permanent reference monuments (P.R.M.) have been placed as required by law.

Robert E. Rodgers
Registered Land Surveyor
Florida Certificate No. 1475

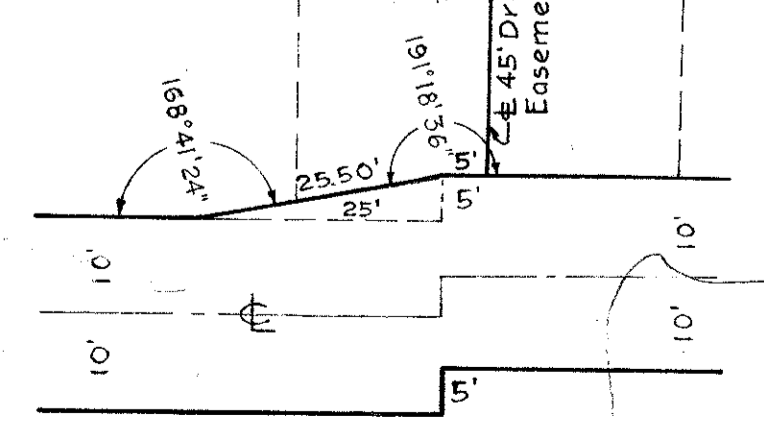
APPROVED OCTOBER 11, A.D. 1966.
Board of County Commissioners

By: *George V. Warren* Chairman
R. Hardy County Engineer

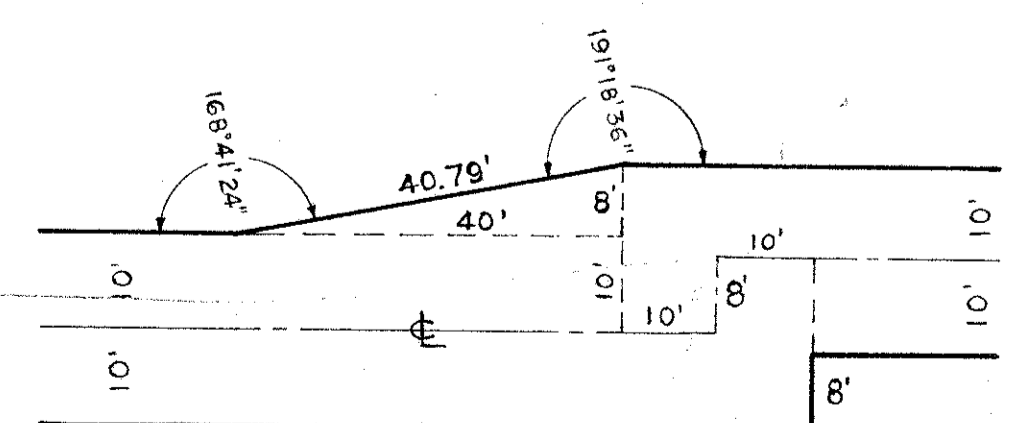


NOTES

- There shall be no building or any type of construction or the planting of trees or shrubs on drainage easements.
- Building setback lines shall be as required by Palm Beach County Zoning Regulations.



DETAIL "A"



DETAIL "B"

1000-231

BROCKWAY, OWEN & ANDERSON
ENGINEERS, INCORPORATED
WEST PALM BEACH, FLORIDA

PLAT NO. 2
PALM BEACH COUNTY INDUSTRIAL PARK
PALM BEACH COUNTY, FLORIDA

FIELD:	SCALE: 1" = 100'	Job No. 66-288
OFFICE: G.R.B.	DATE: Aug., 1966	Dwg. No.
DR. BY: A.T.R.		
FIELD DR. H51	Pag. 4	

28
124