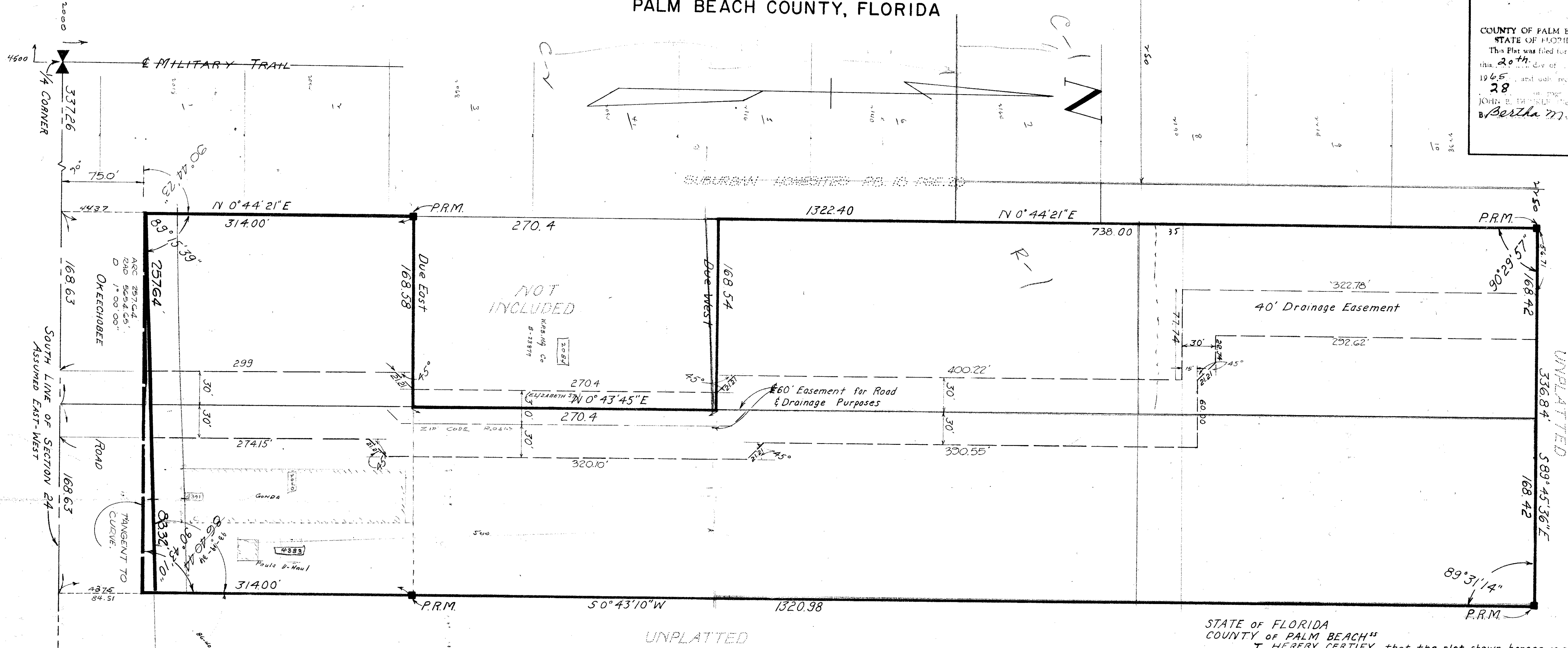


89

PLAT OF ATLANTIC COMMERCIAL PARK

IN SECTION 24 TOWNSHIP 43, SOUTH, RANGE 42 EAST, PALM BEACH COUNTY, FLORIDA

COUNTY OF PALM BEACH
STATE OF FLORIDA
This Plat was filed for record on 11:45 A.M.
the 20th day of Aug
1965, and was recorded in P.B.C. No.
28 on page 89
JOHN B. DUNN, Notary Public
By Bertha M. Gibson, D.C.



STATE OF FLORIDA
COUNTY OF PALM BEACH
I HEREBY CERTIFY that the plat shown hereon is a true and correct representation of a survey, made under my direction, of the hereon described property and that said survey is accurate to the best of my knowledge and belief, and that permanent reference monuments (P.R.M.) have been placed as required by law.

James D. Carlton
Registered Land Surveyor
Florida Certificate No. 747

Subscribed and sworn to before me this 12th day of August, A.D. 1965

Carolyn C. Carlton
Notary Public

My commission expires: March 6, 1968

STATE OF FLORIDA
COUNTY OF PALM BEACH
KNOW ALL MEN BY THESE PRESENTS, that ATLANTIC ENTERPRISES INC. a Florida Corporation, the owner of the tract of land lying and being in the Southeast quarter of Section 24, Township 43 South, Range 42 East, Palm Beach County, Florida, shown hereon as ATLANTIC COMMERCIAL PARK, and more particularly described as follows:
The East 1/2 of the West 1/2 of the Southwest 1/4 of the Southeast 1/4 of said Section 24, less the right of way of Okeechobee Road (State Road 704) and less the parcel shown hereon "Not Included," has caused the same to be surveyed and platted as shown hereon, and does hereby dedicate to the public the use of the Easements for the construction and maintenance of Public Utilities and/or Drainage purposes.
IN WITNESS WHEREOF the said Corporation has caused these presents to be signed by its President and attested by its secretary and its corporate seal to be affixed hereto by and with the authority of its Board of Directors this 11th day of August, A.D. 1965.

ATLANTIC ENTERPRISES INC.

Attest: Rose L. Gladstone Secretary
By: M.B. Gladstone President

STATE OF FLORIDA
COUNTY OF PALM BEACH
I HEREBY CERTIFY that on this day personally appeared before me an officer duly authorized to administer oaths and take acknowledgements, M.B. GLADSTONE and ROSEL GLADSTONE, President and Secretary respectively, of ATLANTIC ENTERPRISES INC. to me well known and known to me to be the individuals described in, and who executed the foregoing dedication, and they acknowledged before me that they executed the same as such officers of said Corporation by and with the authority of its Board of Directors for the purposes therein expressed, and that their act and deed was the act and deed of said Corporation.
WITNESS my hand and official seal at West Palm Beach, County of Palm Beach and State of Florida this 11th day of August, A.D. 1965.
Carolyn C. Carlton
Notary Public
My commission expires: March 6, 1968

Approved: AUGUST 16, AD 1965
Board of County Commissioners
By: Leo Buel Chairman
By: Wendell Acting County Engineer

JAMES D. CARLTON, INC.
ENGINEERS & SURVEYORS
ATLANTIC COMMERCIAL
PARK
28/89
Scale: 1"=50'
August 1965

DRAWING NUMBER 28-89
PLAN HOLD CORPORATION • IRVINE, CALIFORNIA
REGISTERED NUMBER 00000
PROFESSIONAL SEAL OF OFFICE IN USE