

DRAWING NUMBER
28-6A

DRAWING NUMBER

DRAWING NUMBER

DRAWING NUMBER

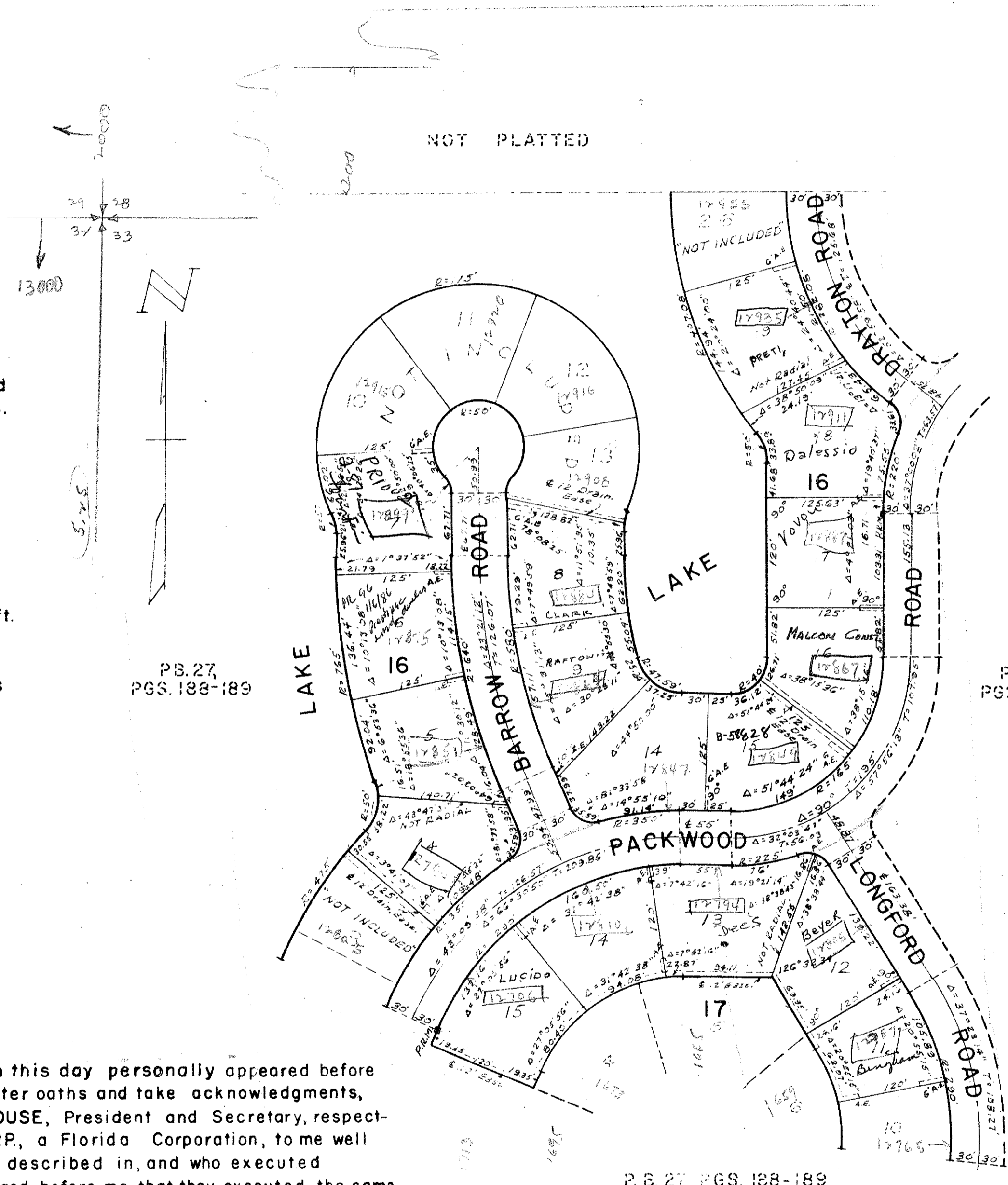
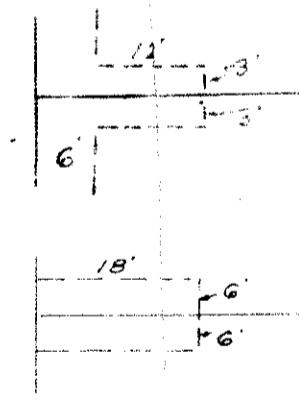
79/82

64
28/64

REPLAT OF
 LOTS 4 THROUGH 9 AND 14 THROUGH 25, BLOCK 16, AND LOTS 11 THROUGH 17, BLOCK 17,
JUNO ISLES PLAT NO. 3
 AS RECORDED IN PLAT BOOK 27, PAGES 188-189
 IN THE NW 1/4 OF SECTION 33, TWP. 41 S., RGE. 43 E.
 PALM BEACH COUNTY, FLORIDA
 FEBRUARY 1965

COUNTY OF PALM BEACH
 STATE OF FLORIDA
 This Plat was filed for record on 4:54 P.M.
 this 16th day of March
 1965, and is recorded in Plat Book No.
28 on page 64
 JOHN B. DUNKLE, Clerk of Court
 By Bella M. Binn D.C.

:NOTE:
 Building Setback Lines shall be as required by Palm Beach County Zoning Regulations.
 There shall be no buildings or other structures placed on Utility Easements.
 There shall be no building or any kind of construction or trees or shrubs placed on Drainage Easements.
 All Block Corners are rounded with a 25 ft. radius curve, unless otherwise shown.
 Easements are for Public Utilities, unless otherwise noted.
 6' x 18' Anchor Easements (A.E.)



STATE OF FLORIDA
 COUNTY OF PALM BEACH^{SS}
 I HEREBY CERTIFY, that on this day personally appeared before me, an officer duly authorized to administer oaths and take acknowledgments, JAMES G. MOODY and EDNA H. STACKHOUSE, President and Secretary, respectively, of BELVEDERE DEVELOPMENT CORP., a Florida Corporation, to me well known and known to me to be the individuals described in, and who executed the foregoing dedication, and they acknowledged before me that they executed the same as such officers of said Corporation, by and with the authority of its Board of Directors for the purposes therein expressed, and that their act and deed was the act and deed of said Corporation.
 WITNESS my hand and official seal at West Palm Beach, County of Palm Beach and State of Florida, this 16th day of February, A.D. 1965

Carolyn E. Carlton
 Notary Public

My Commission expires March 6, 1968

STATE OF FLORIDA
 COUNTY OF PALM BEACH^{SS}
 KNOW ALL MEN BY THESE PRESENTS, that BELVEDERE DEVELOPMENT CORP., a Florida Corporation, the owner of the tract of land lying and being in JUNO ISLES PLAT NO. 3, as recorded in Plat Book 27, Pages 188-189, Public Records of PALM BEACH COUNTY, FLORIDA shown hereon as the Replat of Lots 4 through 9 and 14 through 25, Block 16, and Lots 11 through 17, Block 17 of said plat of JUNO ISLES PLAT NO. 3, in Section 33, Township 41 South, Range 43 East, Palm Beach County, Florida, have caused the same to be surveyed and replatted as shown hereon, and do hereby dedicate to the perpetual use of the public, as public highways, all roads shown hereon, and the use of the easements for the construction and maintenance of Public Utilities and/or Drainage purposes.
 IN WITNESS WHEREOF, the said Corporation has caused these presents to be signed by its President and attested by its Secretary, and its corporate seal to be affixed hereto by and with the authority of its Board of Directors,
 this 16th day of February, A.D. 1965
 BELVEDERE DEVELOPMENT CORP.
 Attest: Edna H. Stackhouse Secretary By: James G. Moody President

STATE OF FLORIDA
 COUNTY OF PALM BEACH^{SS}
 I HEREBY CERTIFY, that the plat shown hereon is a true and correct representation of a survey, made under my direction, of the foregoing described property, and that said survey is accurate to the best of my knowledge and belief, and that permanent reference monuments (P.R.M.) have been placed as required by law.
Raymond P. Keeble
 Registered Land Surveyor
 Florida Certificate No. 1811

Subscribed and sworn to before me this 2 day of March, A.D. 1965
Carolyn E. Carlton
 Notary Public

My Commission expires March 6, 1968

Approved: MARCH 16, A.D. 1965
 Board of County Commissioners
 By: Lali Lylal
 Chairman

1000-215

JUNO ISLES - #5

JAMES D. CARLTON, INC.
 ENGINEERS & SURVEYORS
 JUNO ISLES PLAT NO. 3
 LOTS 4 THROUGH 9 AND 14 THROUGH 25, BLOCK 16,
 AND LOTS 11 THROUGH 17, BLOCK 17
 JUNO ISLES PLAT NO. 3
 Scale 1" = 100'

79/82