

DRAWING NUMBER  
28-17

PLAN HOLD CORPORATION - IRVINE, CALIFORNIA

# PLAT NO 1 OF FOREST MANOR

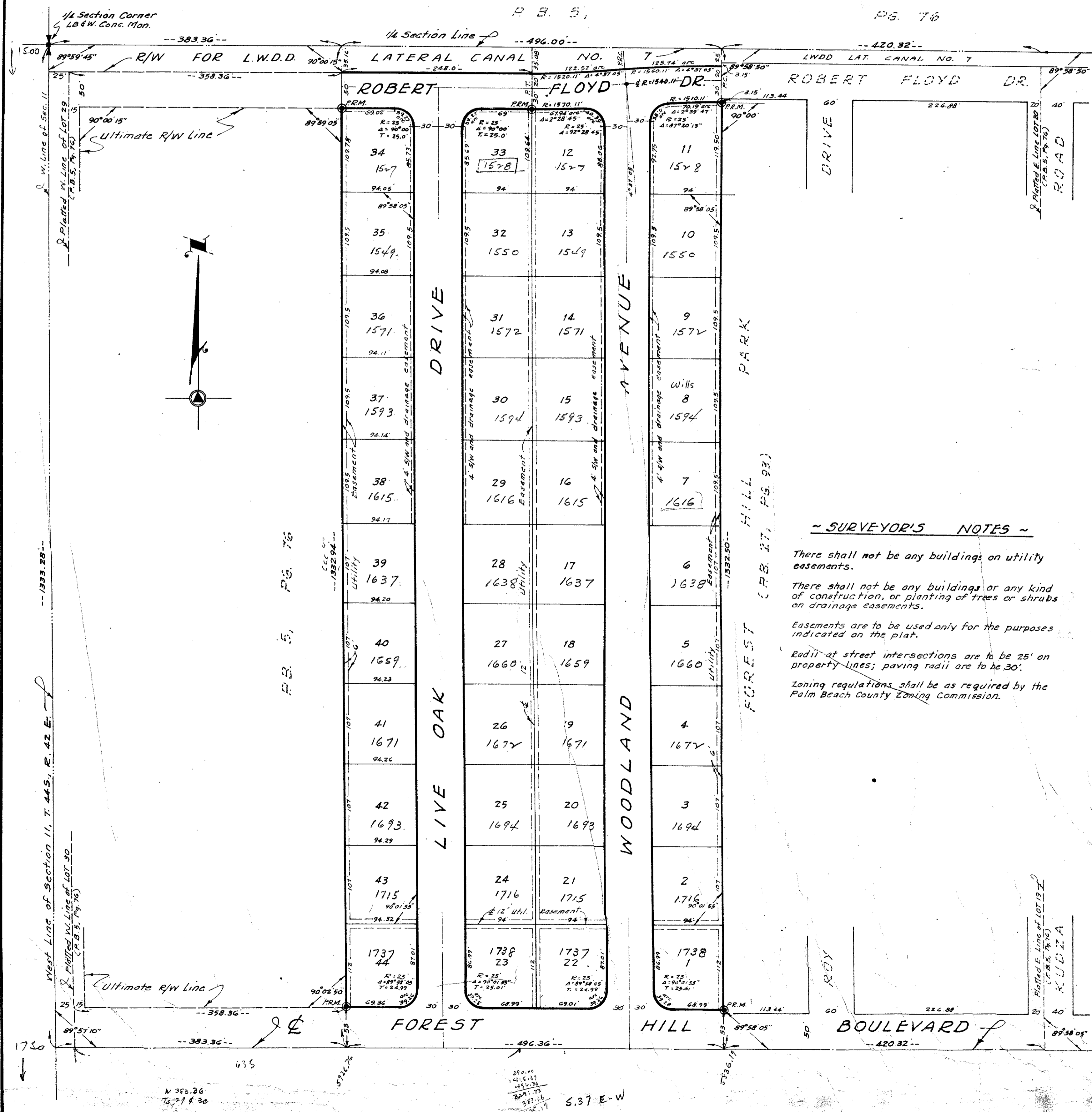
32

17

A RE-SUBDIVISION OF  
LOTS 19 & 20, LESS THE E. 420.32 FEET THEREOF, AND LOTS 29 & 30, LESS  
THE W. 358.36 FEET THEREOF, MODEL LAND CO. SUBD. OF THE WEST HALF OF  
SECTION 11, TWP. 44 S., R. 42 E., AS RECORDED IN PLAT BOOK 5, PAGE 76,  
PUBLIC RECORDS OF PALM BEACH COUNTY, FLORIDA, LESS THE RIGHT-OF-WAY  
FOR FOREST HILL BOULEVARD, AS NOW LAID OUT AND IN USE.

DATE: MAY 4, 1964 SCALE: 1" = 80'

STATE OF FLORIDA  
COUNTY OF PALM BEACH  
This Plat was filed for record on 4:10 PM  
this 12th day of June  
1964 and duly recorded in  
Book 17  
Page 17  
J. ALAN ALBERT  
J. M. Blackburn



STATE OF FLORIDA: 55  
COUNTY OF PALM BEACH: 55  
**~ DEDICATION ~**  
KNOW ALL MEN BY THESE PRESENTS that CONTENTED HOMES, INC., a Florida corporation, the owner of the tract of land lying and being in Section 11, Township 44 South, Range 42 East, Palm Beach County, Florida, shown hereon as PLAT NO. 1 OF FOREST MANOR, and being more particularly described as follows, to wit:  
"LOTS 19 and 20, LESS THE EAST 420.32 FEET THEREOF, AND LOTS 29 and 30, LESS THE WEST 358.36 FEET THEREOF, MODEL LAND CO. SUBDIVISION OF THE WEST HALF (W. 1/2) OF SECTION 11, TOWNSHIP 44 SOUTH, RANGE 42 EAST, AS RECORDED IN PLAT BOOK 5, PAGE 76, PUBLIC RECORDS OF PALM BEACH COUNTY, FLORIDA, LESS THE RIGHT-OF-WAY FOR FOREST HILL BOULEVARD, AS NOW LAID OUT AND IN USE."  
has caused the same to be surveyed and platted as shown hereon, and does hereby dedicate to the perpetual use of the public, as public highways, the drives and avenue shown hereon as ROBERT FLOYD DRIVE, LIVE OAK DRIVE and WOODLAND AVENUE, and the use of the easements shown for the construction and maintenance of public utilities and drainage facilities, as indicated hereon.  
IN WITNESS WHEREOF it has caused these presents to be signed by its President and attested by its Secretary-Treasurer and its corporate seal to be affixed hereto by and with the authority of its Board of Directors, this 1st day of May, A.D. 1964.  
Attest: Edna V. Trepp Secretary-Treasurer By: Michael P. Vassalotti President  
CONTENTED HOMES, INC.

STATE OF FLORIDA: 55  
COUNTY OF PALM BEACH: 55  
**~ ACKNOWLEDGEMENT ~**  
I HEREBY CERTIFY that on this day personally appeared before me, an officer duly authorized to administer oaths and take acknowledgements, MICHAEL P. VASSALOTTI and EDNA V. TREPP, President and Secretary-Treasurer, respectively, of CONTENTED HOMES, INC., a Florida corporation, to me well known and known to me to be the individuals described in and who executed the foregoing dedication, and they acknowledged before me that they executed the same as such officers of said corporation, by and with the authority of its Board of Directors, for the purposes therein expressed, and that their act and deed was me not advised of said corporation.  
WITNESS my hand and official seal of West Palm Beach, County of Palm Beach and State of Florida, this 1st day of May, A.D. 1964.  
My Commission expires October 29, 1965. Claudette J. Hut Notary Public

STATE OF FLORIDA: 55  
COUNTY OF PALM BEACH: 55  
**~ MORTGAGEE'S DEDICATION ~**  
AS OWNERS AND HOLDERS of that certain mortgage, dated March 29, 1963 and recorded in Official Record Book 884, Page 1183, Palm Beach County Public Records, the undersigned hereby consent to and join in the making and filing for record of this plat, and to the dedication to the public of the drives and avenue and easements shown hereon.  
Manasse De Groot Mortgagee By: Theodore A. De Groot Mortgagee By: Manasse De Groot Mortgagee  
Witnesses For De Groot: Manasse De Groot Mortgagee  
Martha E. Prueser Mortgagee By: August J. Prueser Mortgagee By: Martha E. Prueser Mortgagee  
Witnesses For Prueser: August J. Prueser Mortgagee  
SUBSCRIBED and sworn to before me, this 7th day of May, A.D. 1964. Alfred J. Butts Notary Public  
My Commission expires August 21, 1966.  
SUBSCRIBED and sworn to before me, this 14th day of May, A.D. 1964. Barbara M. Davis Notary Public - For Prueser  
My Commission expires December 12, 1964.

STATE OF FLORIDA: 55  
COUNTY OF PALM BEACH: 55  
**~ SURVEYOR'S CERTIFICATE ~**  
I HEREBY CERTIFY that the plat shown hereon is a true and correct representation of a survey of the property described in the foregoing dedication, made under my supervision, that said survey and this plat are accurate to the best of my knowledge and belief, and that permanent reference monuments (P.R.M.) have been placed as are required by law.  
SUBSCRIBED and sworn to before me, this 30th day of April, A.D. 1964. John P. Davis Notary Public  
My Commission expires December 12, 1964. Barbara M. Davis Notary Public

**~ COUNTY APPROVAL ~**  
Approved: 8 June A.D. 1964  
Board of County Commissioners  
By: Edward D. Bavelle Chairman  
By: J. M. Blackburn County Engineer  
**11-44-42**  
**1000-207**  
**2817**  
JOHN P. DAVIS & ASSOCIATES, INC.  
REGISTERED ENGINEERS AND SURVEYORS  
531 EVERETT ST.  
WEST PALM BEACH, FLORIDA  
ALVIN MARTIN  
Reg. Civil Engineer  
No. 5153  
JOHN P. DAVIS  
Reg. Land Surveyor  
Fla. Cert. No. 1275  
PLAT NO 1 OF  
FOREST MANOR  
IN SECTION 11, T. 44 S., R. 42 E., PALM BEACH COUNTY, FLA.  
DATE: MAY 4, 1964 SCALE: 1" = 80'  
FOR: CONTENTED HOMES, INC.  
WEST PALM BEACH, FLORIDA

PLAN HOLD CORPORATION - IRVINE, CALIFORNIA  
REGISTERED BY NUMBER 0249  
MEMBER OF THE NATIONAL SOCIETY OF PROFESSIONAL ENGINEERS AND SURVEYORS  
REGISTERED BY NUMBER 0249  
REGISTERED BY NUMBER 0249