

PALM BEACH NATIONAL GOLF AND COUNTRY CLUB ESTATES

PLAT NO. 1
IN 2 SHEETS SHEET NO. 2

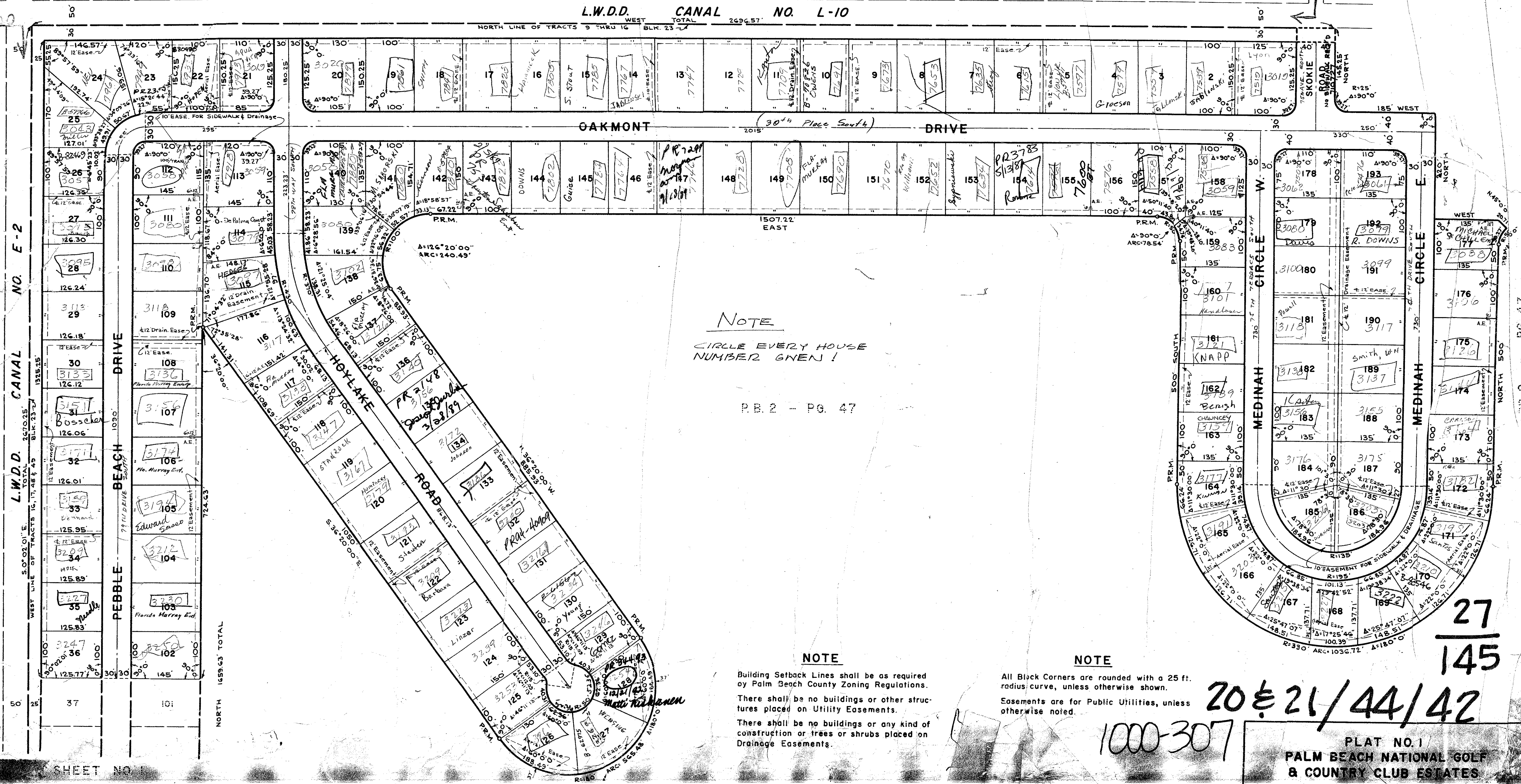


145

P.B. 2 - PG. 47

L.W.D.D. CANAL NO. L-10

NORTH LINE OF TRACTS 9 THRU 16 BLK. 23



NOTE
CIRCLE EVERY HOUSE NUMBER WHEN!

P.B. 2 - PG. 47

NOTE
Building Setback Lines shall be as required by Palm Beach County Zoning Regulations.
There shall be no buildings or other structures placed on Utility Easements.
There shall be no buildings or any kind of construction or trees or shrubs placed on Drainage Easements.

NOTE
All Black Corners are rounded with a 25 ft. radius curve, unless otherwise shown.
Easements are for Public Utilities, unless otherwise noted.

27
145
20 & 21 / 44 / 42
1000-307

PLAT NO. 1
PALM BEACH NATIONAL GOLF & COUNTRY CLUB ESTATES
IN 2 SHEETS SHEET NO. 2
JOHN ADAIR, JR. & ASSOC.
ENGINEERS & LAND SURVEYORS
LAKE WORTH, FLORIDA
DATE: SEPT 1962
SCALE: AS SHOWN
JOB NO. 62

DRAWING NUMBER
27-145

DRAWING NUMBER

DRAWING NUMBER

DRAWING NUMBER

PLAN HOLD CORPORATION • PINE, CALIFORNIA
REGISTERED PROFESSIONAL LAND SURVEYORS
REGISTERED PROFESSIONAL ENGINEERS

PLAN HOLD CORPORATION • PINE, CALIFORNIA
REGISTERED PROFESSIONAL LAND SURVEYORS
REGISTERED PROFESSIONAL ENGINEERS

PLAN HOLD CORPORATION • PINE, CALIFORNIA
REGISTERED PROFESSIONAL LAND SURVEYORS
REGISTERED PROFESSIONAL ENGINEERS

PLAN HOLD CORPORATION • PINE, CALIFORNIA
REGISTERED PROFESSIONAL LAND SURVEYORS
REGISTERED PROFESSIONAL ENGINEERS

8000

7500

NO. E-2

CANAL

DRIVE

DRIVE

DRIVE

DRIVE

DRIVE

NORTH 1559.63' TOTAL

SHEET NO.