

STATE ROAD 15 (U.S. HWY 441)

Assume Bryant Ave as running N-S  
N-S  
Scale 5.3  
8/1/62

# UNITED STATES SUGAR CORPORATION'S ADDITION NO. 2 TO THE TOWNSITE OF CANAL POINT IN SECTION 34, TOWNSHIP 41 SOUTH, RANGE 37 EAST PALM BEACH COUNTY FLORIDA

E-W  
Scale 5.3

### DEDICATION

United States Sugar Corporation, a corporation organized and existing under the laws of the State of Delaware, and authorized to do business in the State of Florida, the owner in fee simple of the herein described lands has caused this plat of "Addition No. 2 to the Townsite of Canal Point" to be made and does hereby dedicate to the perpetual use of the public all streets, avenues and easements shown hereon provided that such streets, avenues and easements shall revert to United States Sugar Corporation, its successors, heirs, assigns or legal representatives in event such streets, avenues or easements are vacated, abandoned or otherwise cease to be used for the purpose intended. In witness whereof, United States Sugar Corporation has caused this dedication to be signed in its corporate name and the corporate seal to be hereunto affixed by its duly authorized officers upon this 6th day of July A.D. 1962.

UNITED STATES SUGAR CORPORATION  
BY John B. Boy  
Executive Vice President  
ATTEST M. Swaine  
Secretary

### ACKNOWLEDGMENT

STATE OF FLORIDA  
COUNTY OF PALM BEACH  
Before me, the undersigned authority, this day personally appeared John B. Boy and S. K. Swaine respectively Executive Vice President and Secretary of United States Sugar Corporation, to me known to be the persons described in and who executed the dedication as shown on this plat, and that they attached thereto the corporate seal of said corporation for the purposes therein set forth and that the same is the free act and deed of said corporation.  
Witness my hand and official seal of Clewiston, Florida this 6th day of July A.D. 1962.  
Manuel B. Lee  
Notary Public, State of Florida  
My commission expires September 8, 1965

### CLERK'S CERTIFICATE

I hereby certify that this plat of "Addition No. 2 to the Townsite of Canal Point" has been examined by me and from my examination find that said plat complies in form with the requirements of Chapter 10275, laws of Florida, Acts of 1925.  
I further certify that said plat was filed for record on 8/1/62 day of July A.D. 1962 and duly recorded in Plat Book 27 on page 118 of the Public Records of Palm Beach County, Florida.

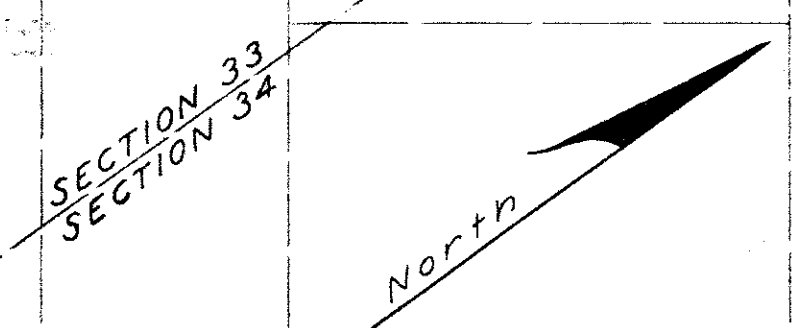
J. Alex Arnette  
Clerk of the Circuit Court in and for Palm Beach County, Florida  
By Burton M. Schorr

1000-304  
27/118

SCALE: 1" = 50'

JUNE 26, 1962

COUNTY PARK  
183



A parcel of land in Section 34, Township 41 South, Range 37 East, adjacent in part to the northeastern side of Addition No. 1 to the Townsite of Canal Point, more particularly described as follows:  
From a marked point on the west line of Section 34, Township 41 South, Range 37 East, said marked point being 3142.33 feet from the Southwest corner thereof, run N 34°-44'-50" E along a line common to Pioneer Investment Co. Plat No. 1, Townsite of Canal Point, as recorded in P.B. 4-Pg. 47 and to Addition No. 1 to the Townsite of Canal Point as recorded in P.B. 24-Pg. 182 in and for the Public Records of Palm Beach County, Florida, a distance of 581.55 feet to an iron marker and the point of beginning.  
From the point of beginning, run N 55°-12'-40" W along the northeastern boundary of said Pioneer Investment Co. Plat No. 1, Townsite of Canal Point, a distance of 185.00 feet to a P.R.M.; thence run N 34°-44'-50" E a distance of 943.00 feet to a P.R.M.; thence run S 55°-12'-40" E a distance of 690.00 feet to a P.R.M.; thence run S 34°-44'-50" W a distance of 693.00 feet to a point; thence run N 55°-12'-40" W a distance of 20.00 feet to a P.R.M.; thence continue N 55°-12'-40" W along the northeastern boundary of said Addition No. 1 to the Townsite of Canal Point a distance of 485.00 feet to a P.R.M.; thence run S 34°-44'-50" W along the boundary of said Addition No. 1 to the Townsite of Canal Point a distance of 50.00 feet to the point of beginning, excepting that parcel in Block 9 labeled "Not included in Plat."  
Said parcel contains 13.73 Acres.

There shall be no buildings on utility easements.  
There shall be no buildings or any kind of construction or the planting of trees or shrubs, on drainage easements.  
Building setback lines shall be as required by Palm Beach County Zoning Regulations.

### APPROVAL

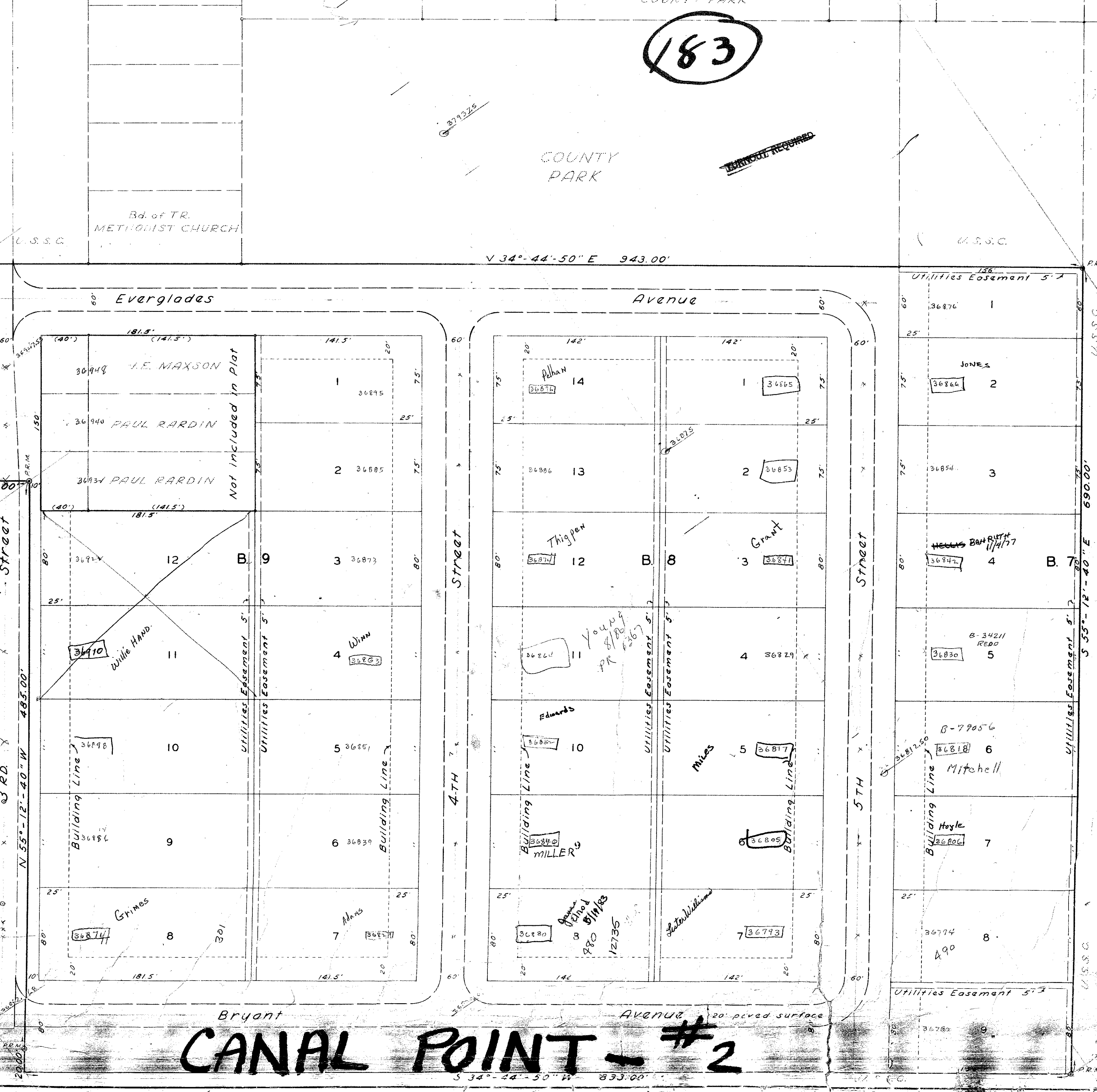
This plat of "Addition No. 2 to the Townsite of Canal Point" is approved by the Board of County Commissioners of Palm Beach County, Florida, this 30th day of July, A.D. 1962.  
Roads will be maintained by Palm Beach County.

Lyle Lital  
Chairman of the Board  
Stephen Meach  
County Engineer

### SURVEYOR'S CERTIFICATE

I hereby certify that this plat of "Addition No. 2 to the Townsite of Canal Point" is a true and correct delineation of a recent survey made and plotted under my direction and that permanent reference monuments have been set as indicated, in accordance with the provisions of Section 7, Chapter 10275, Laws of Florida, Acts of 1925.

W. W. Pitzer  
R.L.S., Florida Certif. 868



Bryant AVENUE  
CANAL POINT - #2

DRAWING NUMBER  
27-118

DRAWING NUMBER

DRAWING NUMBER

DRAWING NUMBER