

DRAWING NUMBER  
**27-48**

# PLAT OF NORTH PALM BEACH HEIGHTS SECTION 2A

LYING IN THE EAST HALF OF SECTION 22, TOWNSHIP 41 SOUTH, RANGE 42 EAST

PALM BEACH COUNTY, FLORIDA  
APRIL 1961 SCALE: 1" = 100'

**E. ELLIOTT GROSS & ASSOCIATES**  
REGISTERED ENGINEERS & SURVEYORS

SHEET 1 OF 2 SHEETS

ALSO BEING A REPLAT OF A PORTION OF BLOCK 58 OF NORTH PALM BEACH HEIGHTS SECTION 1  
AS RECORDED IN P.B. 26, PG. 31

40

STATE OF FLORIDA  
COUNTY OF PALM BEACH

323

29th day of SEPT.

61 and recorded in Plat Book  
27 548+49

Bertie M. Giblin

### DEDICATION:

STATE OF FLORIDA  
COUNTY OF PALM BEACH

KNOW ALL MEN BY THESE PRESENTS, THAT PALM BEACH HEIGHTS, INC. A FLORIDA CORPORATION, THE OWNER OF THE TRACT OF LAND LYING AND BEING IN PALM BEACH COUNTY, FLORIDA SHOWN HEREON AS NORTH PALM BEACH HEIGHTS SECTION 2A, LYING IN THE EAST HALF OF SECTION 22, TOWNSHIP 41 SOUTH, RANGE 42 EAST, AND MORE PARTICULARLY DESCRIBED AS FOLLOWS, TO WIT:

COMMENCING AT THE SOUTHEAST CORNER OF SECTION 22, TOWNSHIP 41 SOUTH, RANGE 42 EAST, PALM BEACH COUNTY, FLORIDA; THENCE N-4°34'-22"E ALONG THE EAST LINE OF SAID SECTION 22 A DISTANCE OF 1054.33' TO THE POINT OF BEGINNING; THENCE CONTINUE N-4°34'-22"E A DISTANCE OF 1085.04' THENCE WEST A DISTANCE OF 1660.20'; THENCE N-17°52'-36"W A DISTANCE OF 1528.74'; THENCE S-17°52'-36"W A DISTANCE OF 1500.00' MORE OR LESS TO THE EAST RIGHT OF WAY LINE OF THE SUNSHINE STATE PARKWAY; THENCE S-17°52'-36"E ALONG SAID EAST RIGHT OF WAY LINE A DISTANCE OF 1525.00'; THENCE N-4°34'-22"E A DISTANCE OF 100.30'; THENCE EAST A DISTANCE OF 101.90' MORE OR LESS TO THE POINT OF BEGINNING, AND ALSO TRACTS N AND O; AND LOTS 38 TO 108 INCLUSIVE, OF BLOCK 58 OF NORTH PALM BEACH HEIGHTS SECTION 1 AS RECORDED IN PLAT BOOK 26, PAGE 31, PUBLIC RECORDS OF PALM BEACH COUNTY, FLORIDA.

HAS CAUSED THE SAME TO BE SURVEYED AND PLOTTED AS SHOWN HEREON AND DOES HEREBY DEDICATE TO THE PERPETUAL USE OF THE PUBLIC AS PUBLIC HIGHWAYS THE STREETS, AVENUE, BOULEVARD, MILE AND ALLEYS, THE CANAL RIGHTS OF WAY AND DRAINAGE EASEMENTS FOR DRAINAGE PURPOSES AND THE UTILITY EASEMENTS FOR THE CONSTRUCTION AND MAINTENANCE OF PUBLIC UTILITIES.

IN WITNESS WHEREOF, THE CORPORATION HAS CAUSED THESE PRESENTS TO BE SIGNED BY ITS PRESIDENT AND ATTESTED BY ITS SECRETARY AND ITS CORPORATE SEAL AFFIXED HERETO BY AND WITH THE AUTHORITY OF THE BOARD OF DIRECTORS OF SAID CORPORATION, THIS 20th DAY OF June, A.D. 1961.

ATTEST:

BY: *H.J. Robinson*  
SECRETARY

PALM BEACH HEIGHTS, INC.  
BY: *M.D. Mary*  
PRESIDENT

### ACKNOWLEDGEMENT:

STATE OF FLORIDA  
COUNTY OF BROWARD

I HEREBY CERTIFY THAT ON THIS DAY PERSONALLY APPEARED BEFORE ME, AN OFFICER DULY AUTHORIZED TO ADMINISTER OATHS AND TAKE ACKNOWLEDGEMENTS, M.L. MARY AND H.J. ROBINSON, PRESIDENT AND SECRETARY, RESPECTIVELY OF PALM BEACH HEIGHTS, INC., A CORPORATION, TO ME WELL KNOWN AND KNOWN TO ME TO BE THE INDIVIDUALS DESCRIBED IN AND WHO EXECUTED THE FOREGOING DEDICATION, AND THEY ACKNOWLEDGED BEFORE ME THAT THEY EXECUTED THE SAME AS SUCH OFFICERS OF SAID CORPORATION, BY AND WITH THE AUTHORITY OF THE BOARD OF DIRECTORS OF SAID CORPORATION FOR THE PURPOSES THEREIN EXPRESSED AND THAT THEIR ACT AND DEED WAS THE ACT AND DEED OF SAID CORPORATION. WITNESS MY HAND AND OFFICIAL SEAL AT Ft. Lauderdale, County of Broward, State of Florida, THIS 21 DAY OF June, A.D. 1961.

JUNE 20, 1964

MY COMMISSION EXPIRES:

*Clair L. Lawrence*  
NOTARY PUBLIC

### NOTE:

FOR ADDITIONAL ACKNOWLEDGEMENTS AND DEDICATIONS, SEE SHEET 2

### CERTIFICATE:

STATE OF FLORIDA  
COUNTY OF PALM BEACH

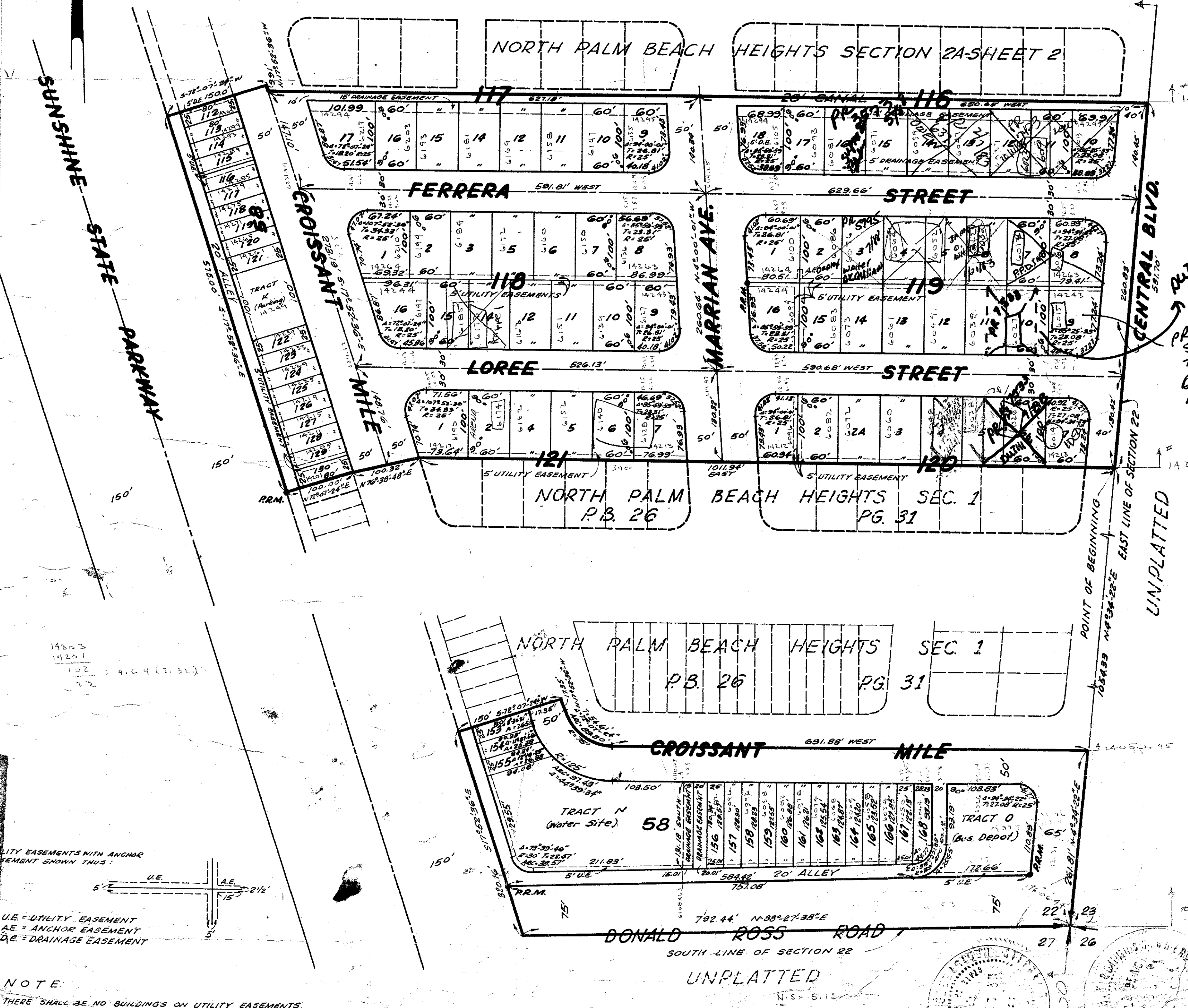
I HEREBY CERTIFY THAT THE PLAT SHOWN HEREON IS A TRUE AND CORRECT REPRESENTATION OF A SURVEY MADE UNDER MY DIRECTION OF THE HEREON DESCRIBED PROPERTY, AND THAT SAID SURVEY IS AS TRUE TO THE BEST OF MY KNOWLEDGE AND BELIEF AND PERMANENT REFERENCE MONUMENTS (R.M.) HAVE BEEN PLACED AS REQUIRED BY LAW.

SUBSCRIBED AND SWORN TO BEFORE ME THIS 25th DAY OF SEPTEMBER, A.D. 1961

MY COMMISSION EXPIRES: MARCH 7, 1964

APPROVAL:

APPROVED: *September 25* A.D. 1961  
BOARD OF COUNTY COMMISSIONERS

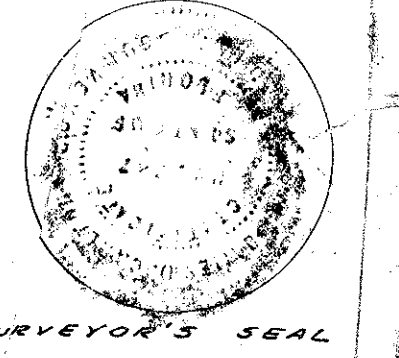
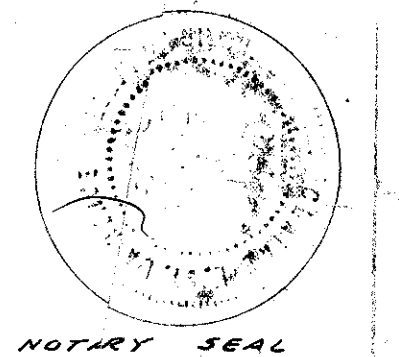
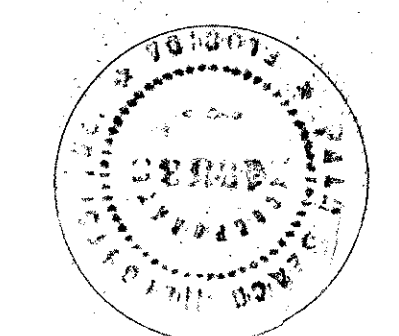


UTILITY EASEMENTS WITH ANCHOR EASEMENT SHOWN THIS:

U.E. = UTILITY EASEMENT  
A.E. = ANCHOR EASEMENT  
D.E. = DRAINAGE EASEMENT

NOTE:  
THERE SHALL BE NO BUILDINGS ON UTILITY EASEMENTS.  
THERE SHALL BE NO BUILDINGS OR ANY TYPE OF CONSTRUCTION OR THE PLANTING OF TREES OR SHRUBS ON DRAINAGE EASEMENTS.  
BUILDING SETBACK LINES SHALL BE AS REQUIRED BY PALM BEACH COUNTY ZONING ORDINANCES.

# NORTH PALM BEACH HEIGHTS SECTION 2A



*James C. Carter*  
REGISTERED LAND SURVEYOR  
FLORIDA CERTIFICATE # 747

*22/24/1961*

