

DRAWING NUMBER
26-239

DRAWING NUMBER

DRAWING NUMBER

DRAWING NUMBER

PLAT NO. 2

PALM BEACH CABANA COLONY

IN 2 SHEETS SHEET NO. 2

30
31
45
46

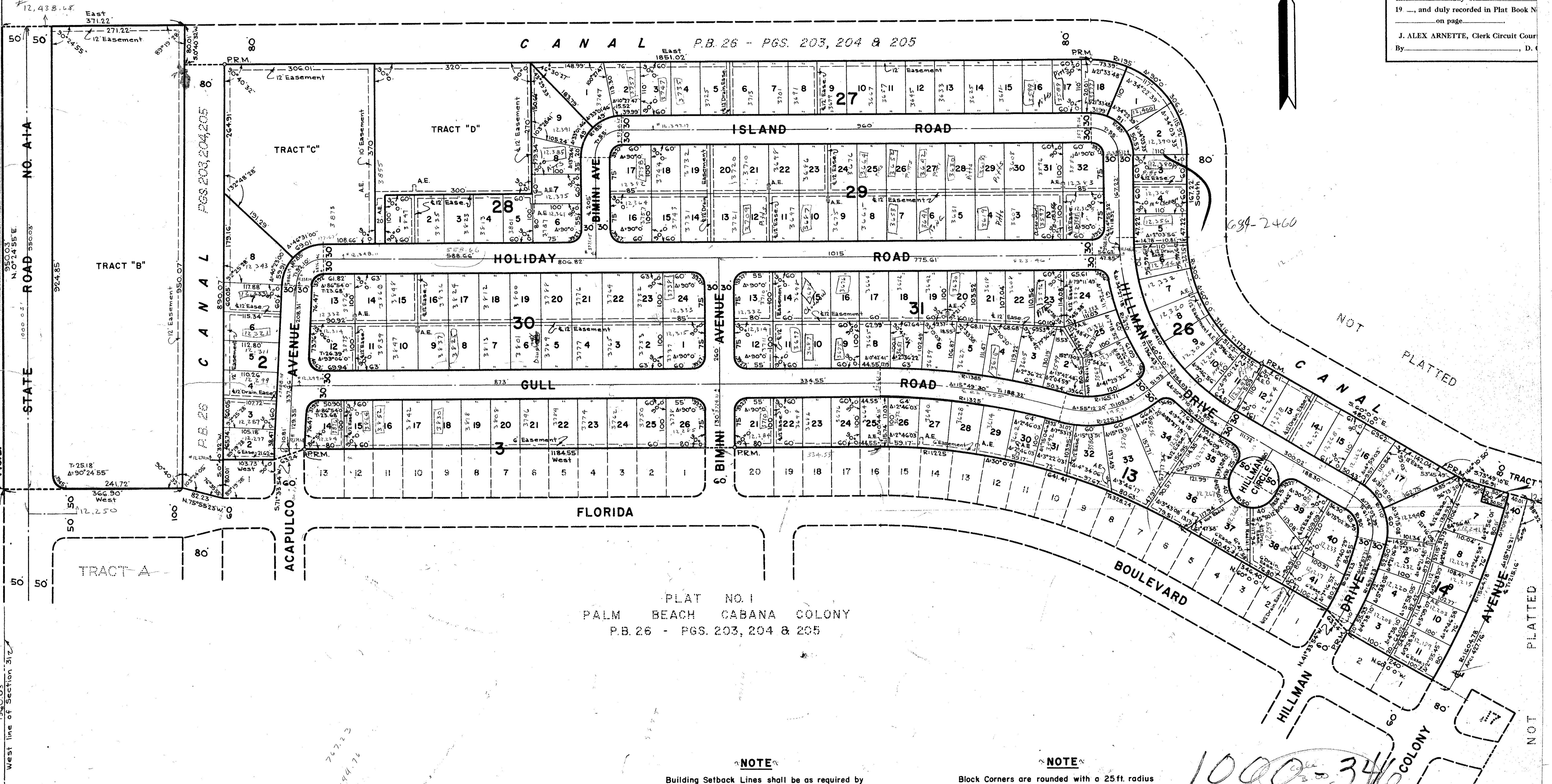
8372889

239

STATE OF FLORIDA
COUNTY OF PALM BEACH } SS.
This Plat was filed for record at
this _____ day of _____
19____, and duly recorded in Plat Book No. _____
on page _____
J. ALEX ARNETTE, Clerk Circuit Court
By _____, D. C.



NOT PLATTED



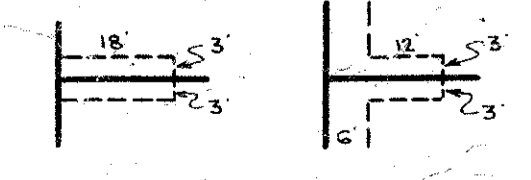
PLAT NO. 1
PALM BEACH CABANA COLONY
P.B. 26 - PGS. 203, 204 & 205

NOTE

Building Setback Lines shall be as required by Palm Beach County Zoning Regulations.
There shall be no buildings or other structures placed on Utility Easements.
There shall be no buildings or any kind of construction or trees or shrubs placed on Drainage Easements.
Tracts B, C, D and E are not to be used as building sites unless combined with adjoining property or replatted.

NOTE

Block Corners are rounded with a 25ft. radius curve, unless otherwise shown.
Easements are for Public Utilities, unless otherwise noted.
6' x 18' Anchor Easements (A.E.)



10000-346

BROCKWAY, WEBER & BROCKWAY
ENGINEERS, INCORPORATED
WEST PALM BEACH, FLORIDA

31/41/43
PLAT NO. 2
PALM BEACH CABANA COLONY
IN 2 SHEETS SHEET NO. 2
(26-239)

FIELD: S.V.M. SCALE: 1" = 100' No.
OFFICE: J.F. No.
DR. BY: M.E.S.

Sec. 31, Twp. 41 S., Rge. 43 E.
STATE ROAD 8800
ACAPULCO AVENUE
HILLMAN DRIVE
BOULEVARD
FLORIDA ROAD
GULL ROAD
HOLIDAY ROAD
ISLAND ROAD
CANA L
BIMINI AVENUE
SECTION CORNER
East - West