

DRAWING NUMBER  
**26-204**

DRAWING NUMBER

DRAWING NUMBER

DRAWING NUMBER

# PALM BEACH CABANA COLONY

PLAT NO. 1  
IN 3 SHEETS SHEET NO. 2

204

STATE OF FLORIDA  
COUNTY OF PALM BEACH )  
This Plat was filed for record at \_\_\_\_\_ M.  
this \_\_\_\_\_ day of \_\_\_\_\_  
196\_\_\_\_, and duly recorded in Plat Book No. \_\_\_\_\_  
on page \_\_\_\_\_  
J. ALEX ARNETTE, Clerk Circuit Court  
By \_\_\_\_\_, D. C.

NOT PLATTED

NOT PLATTED

NOT PLATTED

NOT PLATTED

NOT PLATTED

NOTE

NOTE

Building Setback Lines shall be as required by Palm Beach County Zoning Regulations.  
There shall be no buildings or other structures placed on Utility Easements.  
There shall be no buildings or any kind of construction or trees or shrubs placed on Drainage Easements.

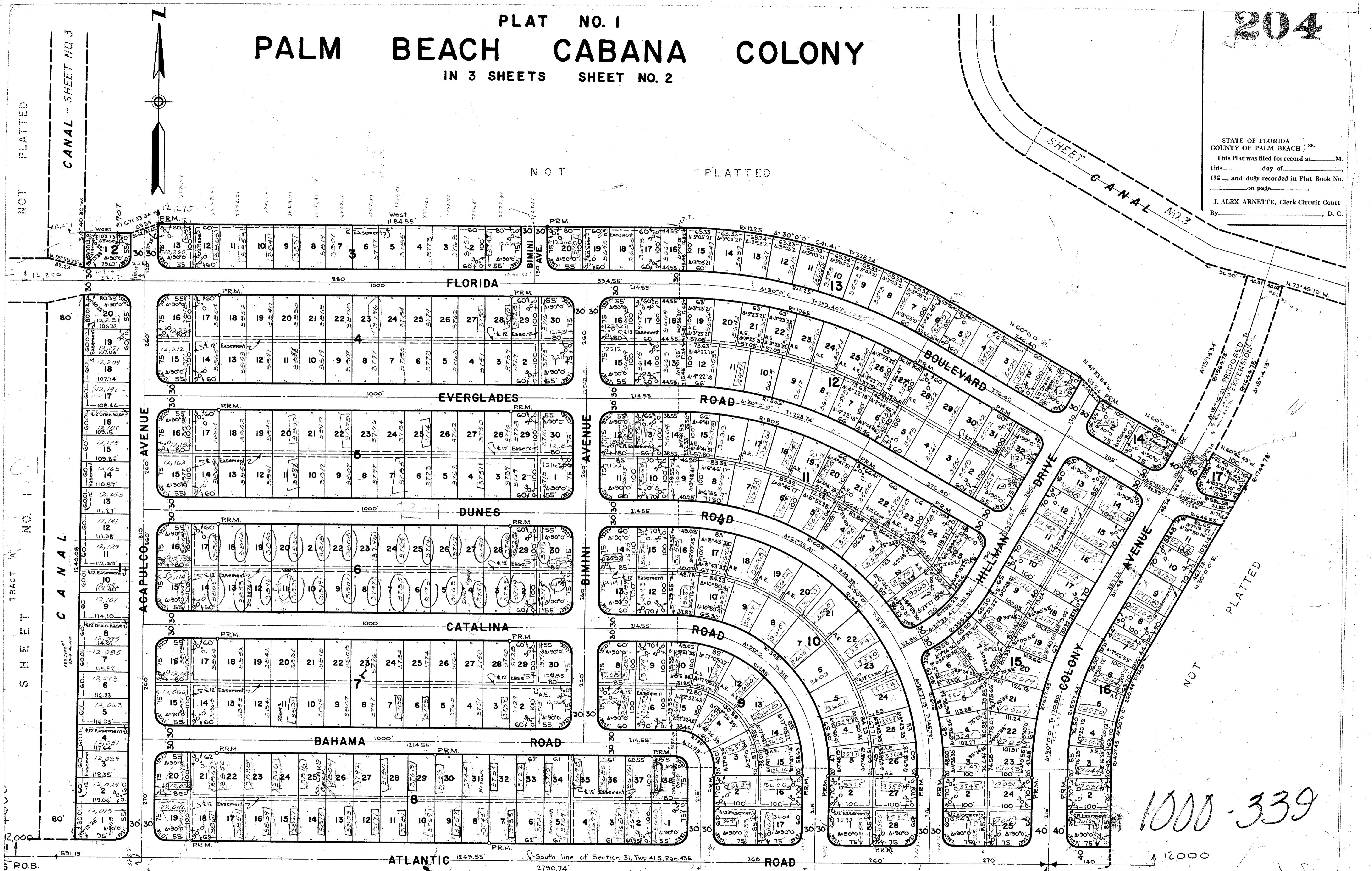
Block Corners are rounded with a 25 ft. radius curve, unless otherwise shown.  
Easements are for Public Utilities, unless otherwise noted.  
6'x18' Anchor Easements (A.E.)

BROCKWAY, WEBER & BROCKWAY  
ENGINEERS, INCORPORATED  
WEST PALM BEACH, FLORIDA

PLAT NO. 1  
PALM BEACH CABANA COLONY  
IN 3 SHEETS SHEET NO. 2

OFFICE: J.J.F. SCALE: 1" = 40'

1000-339



TRACT NO. 1

SECTION CORNER

ROB. Section Corner

1/4 Section Corner

PLANNING CORPORATION - PALM BEACH, CALIFORNIA

PLANNING CORPORATION - PALM BEACH, CALIFORNIA

PLANNING CORPORATION - PALM BEACH, CALIFORNIA

PLANNING CORPORATION - PALM BEACH, CALIFORNIA