

DRAWING NUMBER  
26-169

DRAWING NUMBER

DRAWING NUMBER

DRAWING NUMBER

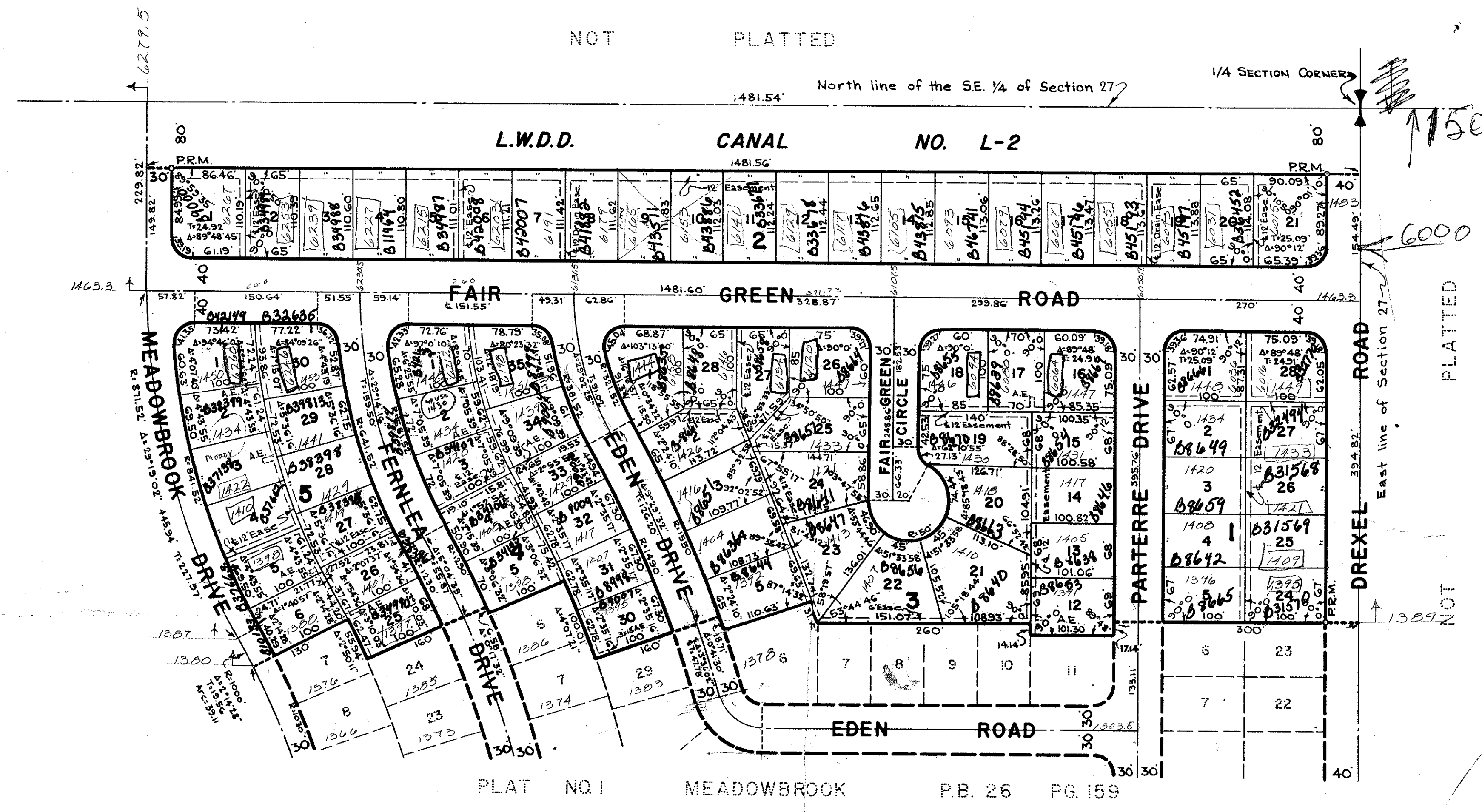
PLAT NO. 2

# MEADOWBROOK

IN SE 1/4 OF SECTION 27, TWP. 43 S., RGE. 42 E.  
PALM BEACH COUNTY, FLORIDA

Being a Replat of Tract "X", Plat No. 1, Meadowbrook, recorded in Plat Book 26,  
Page 159, Public Records of Palm Beach County, Florida.

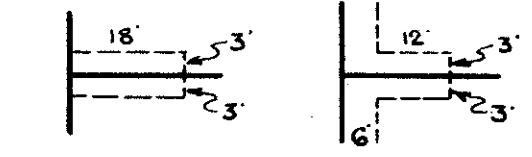
# 169



STATE OF FLORIDA  
COUNTY OF PALM BEACH  
This Plat was filed for record at 4:22 P.M.  
this 3rd day of June  
1960 and duly recorded in Plat Book No.  
26 on page 169.  
J. ALEX ARNETTE, Clerk Circuit Court  
By: J. M. Blackburn, D.C.

**NOTE**  
Building Setback Lines shall be as required by  
Palm Beach County Zoning Regulations.  
There shall be no buildings or other structures  
placed on Utility Easements.  
There shall be no buildings or any kind of con-  
struction or trees or shrubs placed on Drainage  
Easements.

**NOTE**  
All Block Corners are rounded with a 25 ft.  
radius curve, unless otherwise shown.  
Easements are for Public Utilities, unless  
otherwise noted.  
6'x18' Anchor Easements (A.E.)



# 1000-698

STATE OF FLORIDA  
COUNTY OF PALM BEACH ss  
KNOW ALL MEN BY THESE PRESENTS, that MEADOWBROOK CONSTRUCTION  
CORP., a Florida Corporation, the owners of the tract of land lying and being in Section 27,  
Township 43 South, Range 42 East, Palm Beach County, Florida, shown hereon as PLAT NO. 2,  
MEADOWBROOK, and more particularly described as follows, to wit:  
Being a Replat of Tract "X", Plat No. 1, Meadowbrook, according to the plat thereof  
on file in the office of the Clerk of the Circuit Court, in and for Palm Beach County,  
Florida, recorded in Plat Book 26, Page 159.  
has caused the same to be surveyed and platted as shown hereon and does hereby dedicate  
to the perpetual use of the public, as public highways, the Drives, Road and Circle shown  
hereon, and the use of the Easements for the construction and maintenance of Public Utilities.  
IN WITNESS WHEREOF, the said Corporation has caused these presents to be  
signed by its President and attested by its Secretary and its corporate seal to be affixed  
hereto, by and with the authority of its Board of Directors, this 31st day of May  
A.D. 1960.  
MEADOWBROOK CONSTRUCTION CORP.  
Attest: Romeo A. Amari Secretary By: George L. Hansen Jr. President

STATE OF FLORIDA  
COUNTY OF PALM BEACH ss  
I HEREBY CERTIFY, that on this day personally appeared before me, an  
officer duly authorized to administer oaths and take acknowledgments, GEORGE CRAVERO,  
JR. and ROMEO A. AMARI, President and Secretary, respectively, of MEADOWBROOK  
CONSTRUCTION CORP., a Florida Corporation, to me well known and known to me to be  
the individuals described in, and who executed the foregoing dedication, and they acknow-  
ledged before me that they executed the same as such officers of said Corporation,  
by and with the authority of its Board of Directors, for the purposes therein  
expressed, and that their act and deed was the act and deed of said Corporation.  
WITNESS my hand and official seal at West Palm Beach, County of  
Palm Beach and State of Florida, this 31st day of May, A.D. 1960.  
John J. Flowers  
Notary Public  
My Commission expires: August 7, 1961

STATE OF FLORIDA  
COUNTY OF PALM BEACH ss  
I HEREBY CERTIFY, that the plat shown hereon is a true and correct  
representation of a survey, made under my direction, of the foregoing described prop-  
erty, and that said survey is accurate to the best of my knowledge and belief,  
and that permanent reference monuments (P.R.M.) have been placed as required by  
law.  
Henry B. Brockway  
Registered Land Surveyor  
Florida Certificate No. 831  
Subscribed and sworn to before me this 30th day of May, A.D. 1960.  
John J. Flowers  
Notary Public  
My Commission expires: August 7, 1961

Approved: 3 June, A.D. 1960.  
Board of County Commissioners  
By: William J. ... Chairman  
By: Stephen R. ... County Engineer

BROCKWAY, WEBER & BROCKWAY  
ENGINEERS, INCORPORATED  
WEST PALM BEACH, FLORIDA 169  
PLAT NO. 2  
MEADOWBROOK  
27-43-42