

SLEEPY HOLLOW

PLAT NO. 1

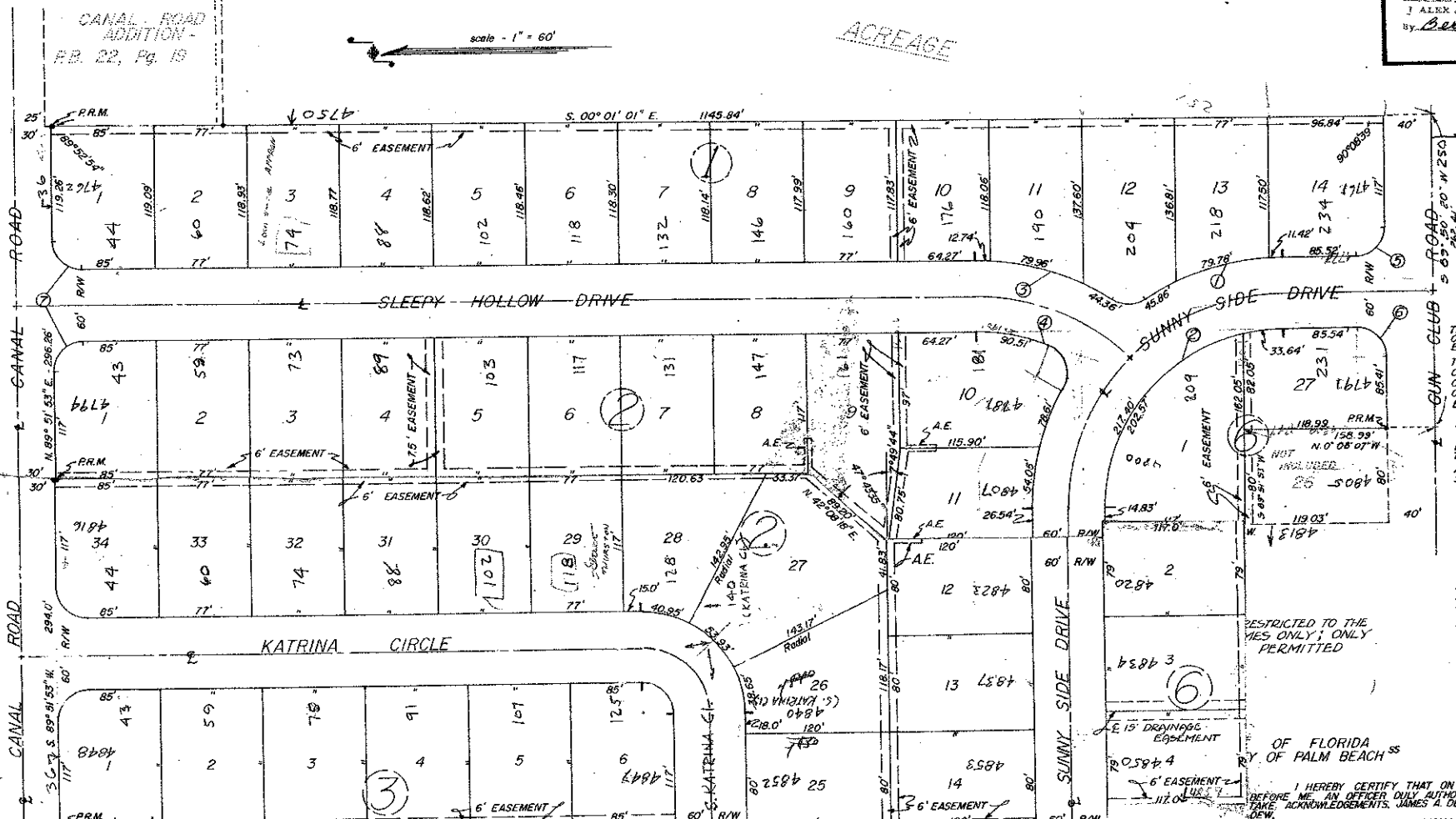
134

DRAWING NUMBER
26-134

CURVE NOTES

- ① $\Delta = 90^{\circ}00'00''$
 $R = 210.41'$
 $T = 210.41'$
 $L = 330.51'$
- ② $\Delta = 90^{\circ}00'00''$
 $R = 150.41'$
 $T = 150.41'$
 $L = 236.26'$
- ③ $\Delta = 37^{\circ}19'20''$
 $R = 210.41'$
 $T = 66.99'$
 $L = 137.06'$
- ④ $\Delta = 34^{\circ}28'41''$
 $R = 150.41'$
 $T = 46.67'$
 $L = 90.51'$
- ⑤ $\Delta = 69^{\circ}28'30''$
 $R = 25.0'$
 $T = 25.0'$
 $L = 39.27'$
- ⑥ $\Delta = 90^{\circ}01'30''$
 $R = 25.0'$
 $T = 25.0'$
 $L = 39.27'$
- ⑦ $\Delta = 90^{\circ}00'00''$
 $R = 25.00'$
 $T = 25.00'$
 $L = 39.27'$

A SUBDIVISION OF A PART OF THE N.W. 1/4 OF THE N.W. 1/4 OF SECTION 1, TOWNSHIP 44 SOUTH, RANGE 42 EAST, BEING A REPLAT OF A PORTION OF LOT 5, BLOCK 2, SECTION 1, OF PALM BEACH PLANTATIONS PLAT NO. 1, PLAT BOOK 10, PAGE 20, PALM BEACH COUNTY, FLORIDA.



SECTION CORNER
South 190'
CERTIFICATE
STATE OF FLORIDA
COUNTY OF PALM BEACH
I HEREBY CERTIFY THAT THE REPRESENTATION OF A SURVEY DESCRIBED HEREON AND THAT KNOWLEDGE AND BELIEF HAVE BEEN PLACED
SURVEYED:
DECEMBER 21, 1959

APPROVED: John S. Johnson 1960 A.D.
BOARD OF COUNTY COMMISSIONERS
BY: Robert M. Dew
VICE CHAIRMAN
BY: Stephen Musial
COUNTY ENGINEER

CERTIFICATE OF CLERK OF CIRCUIT COURT
STATE OF FLORIDA
COUNTY OF PALM BEACH
I, CLERK OF THE CIRCUIT COURT PALM BEACH COUNTY, FLORIDA, DO HEREBY CERTIFY THAT I HAVE EXAMINED THIS PLAT OF SLEEPY HOLLOW, PLAT NO. 1, AND THAT IT CONFORMS WITH ALL THE REQUIREMENTS OF THE LAWS OF FLORIDA PERTAINING TO MAPS & PLATS, AND THAT THIS PLAT HAS BEEN FILED FOR RECORD IN PLAT BOOK PAGE PALM BEACH COUNTY PUBLIC RECORDS.

CLERK OF CIRCUIT COURT
PALM BEACH COUNTY

FOR PALM BEACH COUNTY, FLORIDA, IN RECORD BOOK 10, PAGE 20, BEING A REPLAT OF A PORTION OF LOT 5, BLOCK 2, SECTION 1, OF PALM BEACH PLANTATIONS PLAT NO. 1, PLAT BOOK 10, PAGE 20, PALM BEACH COUNTY, FLORIDA, I HEREBY DEDICATE TO THE PUBLIC USE OF THE PUBLIC ROADS, STREETS, AND EASEMENTS THEREOF RESERVING UNTO THEMSELVES, THEIR HEIRS, SUCCESSORS OR ASSIGNS, THE REVERSION OR REVERSIONS THEREOF WHENEVER DISCONTINUED BY LAW. EASEMENTS SHOWN HEREON ARE RESERVED FOR THE INSTALLATION AND MAINTENANCE OF UTILITY AND DRAINAGE FACILITIES. IN WITNESS WHEREOF THEY HAVE HEREUNTO SET THEIR HANDS AND SEALS THIS 12th DAY OF JANUARY, 1960 A.D.

Harold D. Appel WITNESS
Charles A. Wutler WITNESS
(AS TO ALL SIGNATORS.)

Barbara M. Dew (SEAL)
Howard J. Miller (SEAL)
Thomasine Miller (SEAL)

NOTES
THERE SHALL BE NO BUILDING OR CONSTRUCTION ON UTILITY EASEMENTS.
THERE SHALL BE NO BUILDING OR ANY KIND OF CONSTRUCTION OR THE PLANTING OF TREES OR SHRUBS ON DRAINAGE EASEMENTS.
LOT NUMBERS SHOWN THUSLY ①
BLOCK NUMBERS SHOWN THUSLY ②
ANCHOR EASEMENTS (A.E.) SHOWN THUSLY ③
ALL ROUNDED CORNERS HAVE 25' RADIUS UNLESS OTHERWISE SHOWN.
LOTS & BLOCKS ARE NUMBERS TO CONFORM WITH ULTIMATE DEVELOPMENT.
ALL BEARINGS ARE ASSUMED BEARINGS.
BUILDING SETBACK LINES SHALL BE AS REQUIRED BY P.B. CO. ZONING REGULATIONS.

STATE OF FLORIDA
COUNTY OF PALM BEACH
I HEREBY CERTIFY THAT ON THIS DAY PERSONALLY APPEAR BEFORE ME AN OFFICER ONLY AUTHORIZED TO ADMINISTER OATHS AND TAKE ACKNOWLEDGEMENTS, JAMES A. DEW, JR., HIS WIFE BARBARA M. DEW, HOWARD J. MILLER AND HIS WIFE THOMASINE MILLER, TO ME WELL KNOWN AND KNOWN TO ME TO BE THE INDIVIDUALS DESCRIBED IN AND WHO EXECUTED THE FOREGOING DEDICATION AND THEY ACKNOWLEDGE BEFORE ME THAT THEY EXECUTED THE SAME FREELY AND VOLUNTARILY FOR THE PURPOSE THEREIN EXPRESSED. AND I FURTHER CERTIFY THAT BARBARA M. DEW, AND THOMASINE MILLER, KNOWN TO ME TO BE THE WIVES OF JAMES A. DEW, JR. AND HOWARD J. MILLER, RESPECTIVELY, IN A SEPARATE AND PRIVATE EXAMINATION TAKEN AND MADE BY AND BEFORE ME, SEPARATELY AND APART FROM THEIR RESPECTIVE HUSBANDS, DID ACKNOWLEDGE THAT THEY MADE THEMSELVES PARTIES TO SAID DEDICATION FOR THE PURPOSE OF RELINQUISHING, RELINQUISHING AND CONVEYING ALL THEIR RIGHTS, TITLES AND INTERESTS IN AND TO THE ROADS AND STREETS DESCRIBED THEREIN, AND THAT THEY EXECUTED THE SAID DEDICATION FREELY AND VOLUNTARILY AND WITHOUT ANY COMPULSION, CONSTRAINT, APPREHENSION OR FEAR OF, OR FROM THEIR SAID HUSBANDS.

WITNESS MY HAND AND OFFICIAL SEAL AT WEST PALM BEACH, COUNTY OF PALM BEACH, STATE OF FLORIDA, THIS 12th DAY OF JANUARY, 1960 A.D.
4000-085
MARCH 4, 1960

(26-134)
1-44-42

O'NEAL 8 BRADY